



ASCE Winter Meeting

Will Buechner Parkway

March 14, 2024

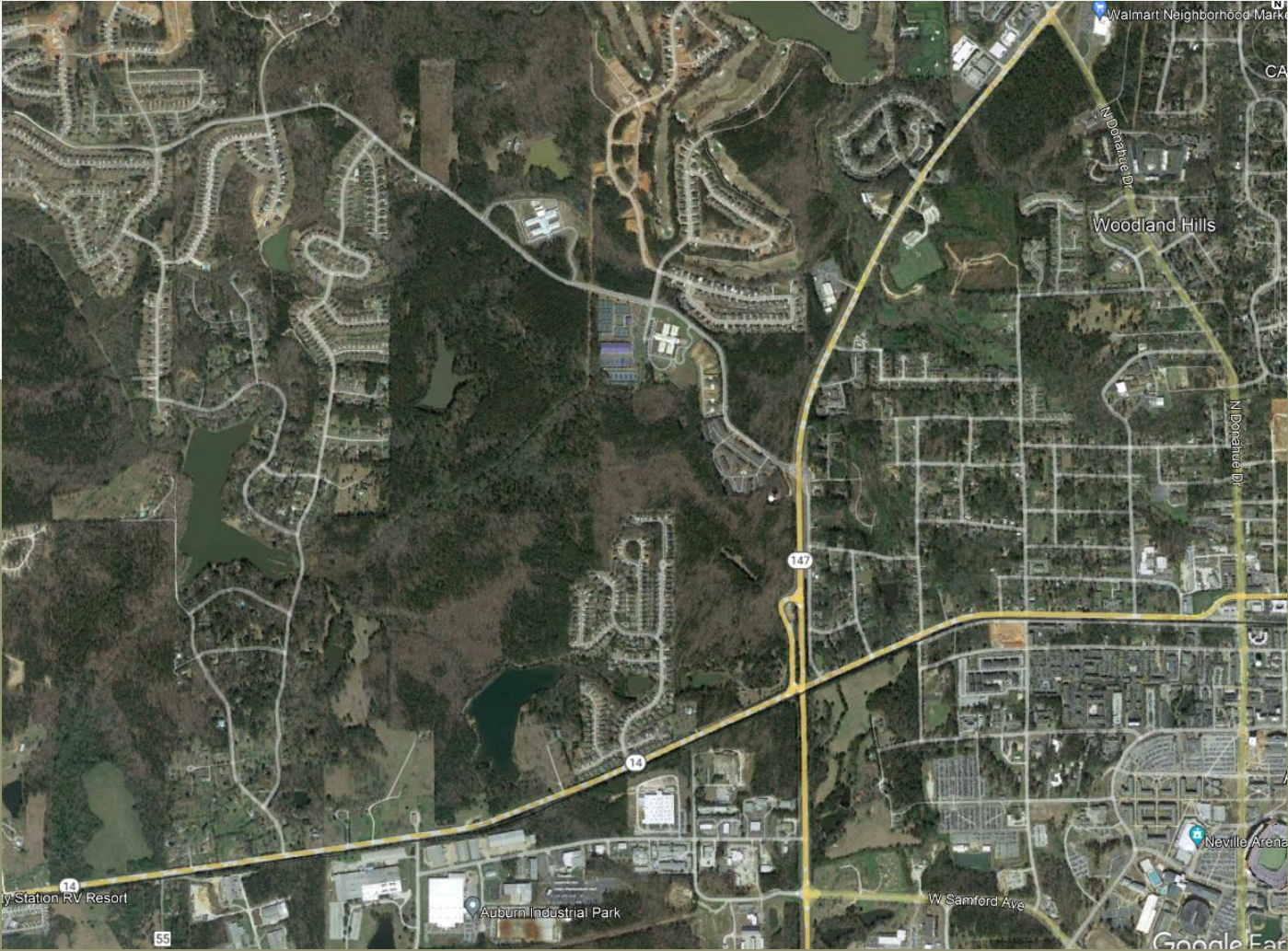


City of Auburn

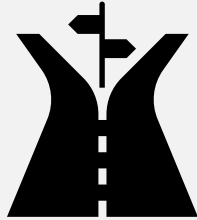


SAIN
ASSOCIATES

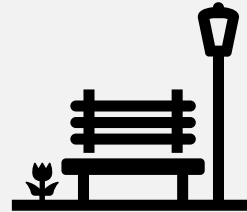
The Project Location – Prior to Project



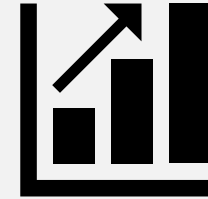
Project Goals



Connect Martin Luther King Dr. (AL Hwy 14) near Webster Rd. to Richland Rd. near Creekside Elementary School.

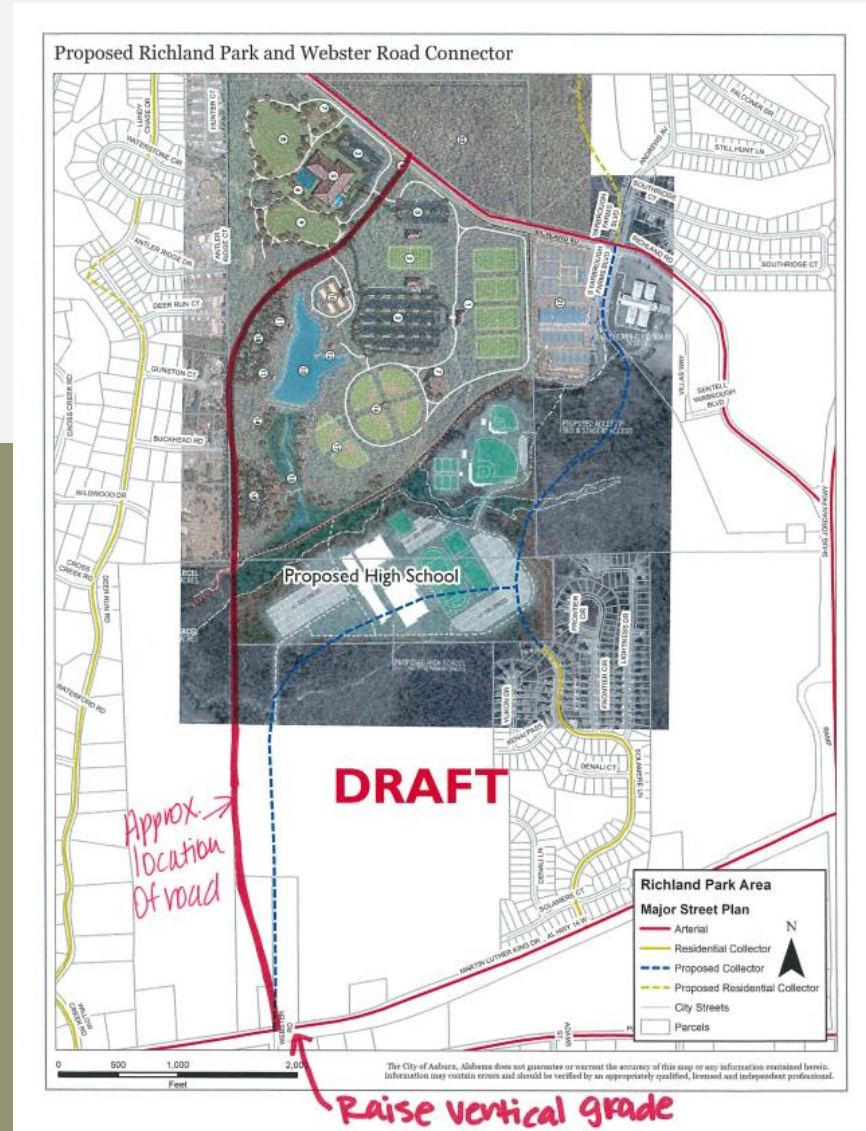


Enhance connectivity to residential neighborhoods, public schools, and future parks.



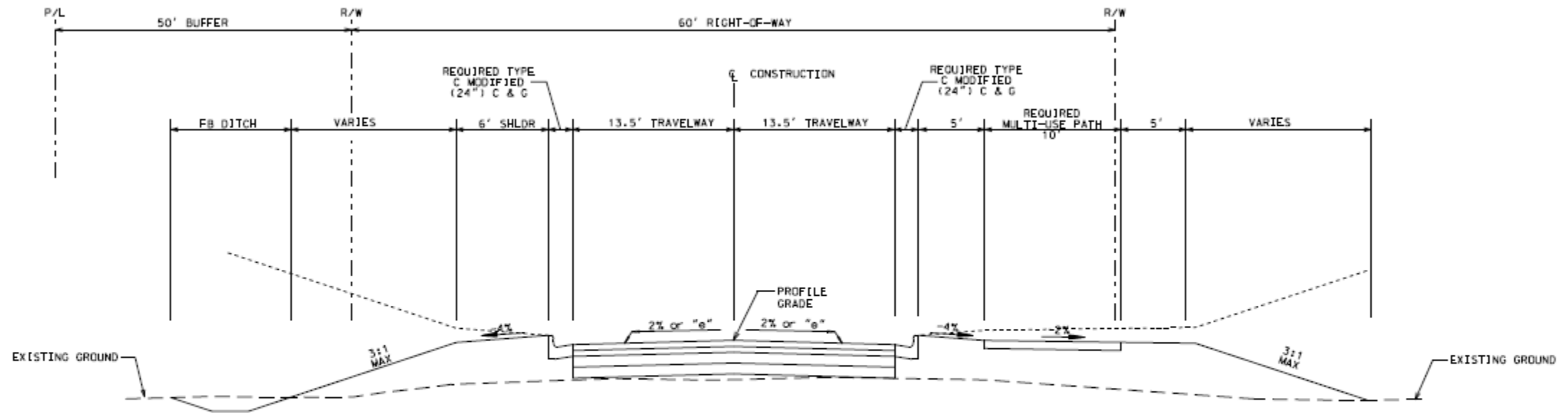
Accommodate future growth.

Concept Plan



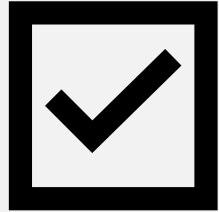
Everything looks so easy on paper!

Concept Typical Section



WEBSTER ROAD EXTENSION
TYPICAL SECTION

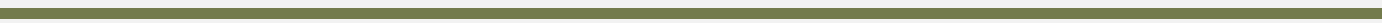
Challenges



Major Drainage Crossings
Property Owners and Impacts
Steep Terrain
Planned Development
Improvements to State Route
Railroad
Utilities



New Location
???



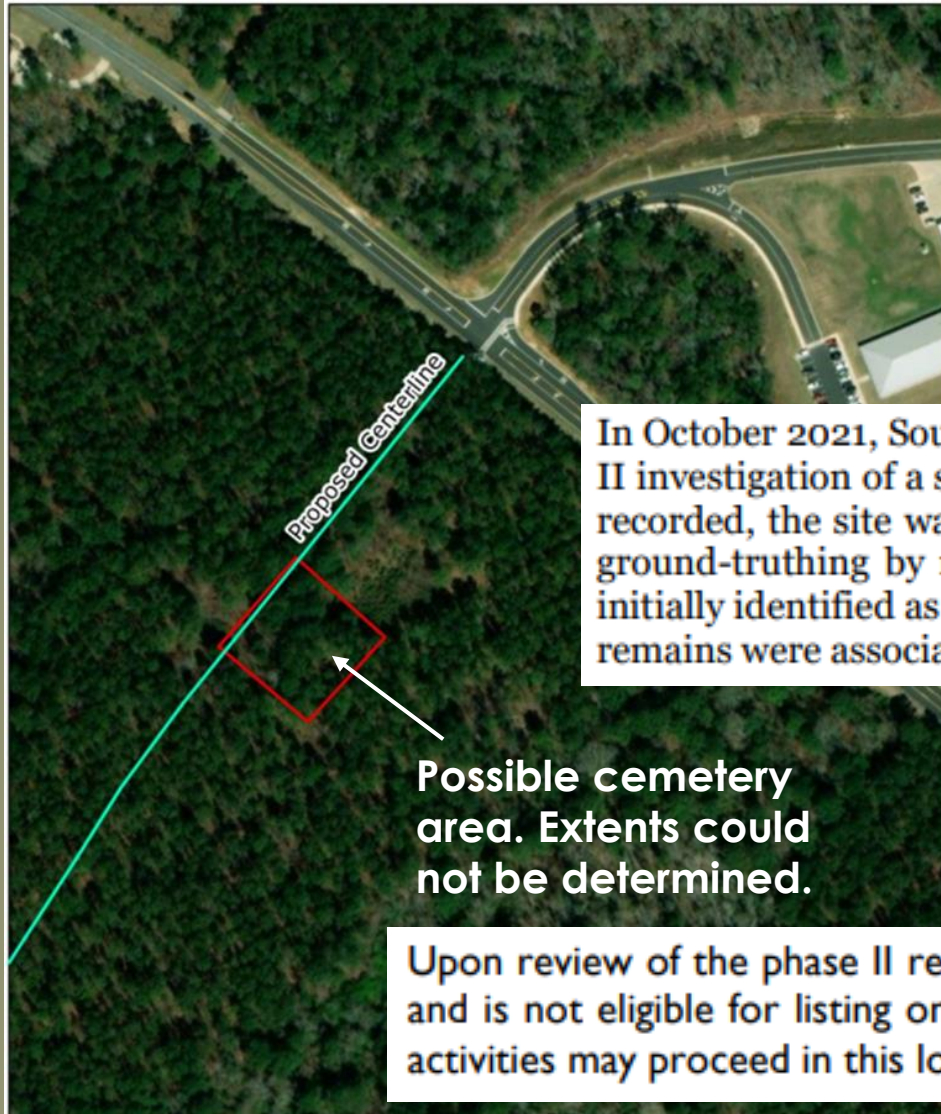
New Location

Things to Consider:

- **Environmental Studies**
 - Might be land that has never been disturbed.
- **Geotech**
 - Staking of CL, removal of trees.
- **Property Owner Permission**
 - Might have to clear or dig on their property before acquiring it; consider drone survey.



What??!



In October 2021, Southern Research, Historic Preservation Consultants, Inc., conducted a Phase II investigation of a small portion of archaeological site 1LE560 in Auburn, Alabama. When first recorded, the site was purported to contain a cemetery. Through thorough documentation and ground-truthing by means of backhoe stripping, the principal investigator concludes the area initially identified as a cemetery was, in fact, the remnants of an outbuilding, and that no human remains were associated with the concrete foundation remnants.

Possible cemetery area. Extents could not be determined.

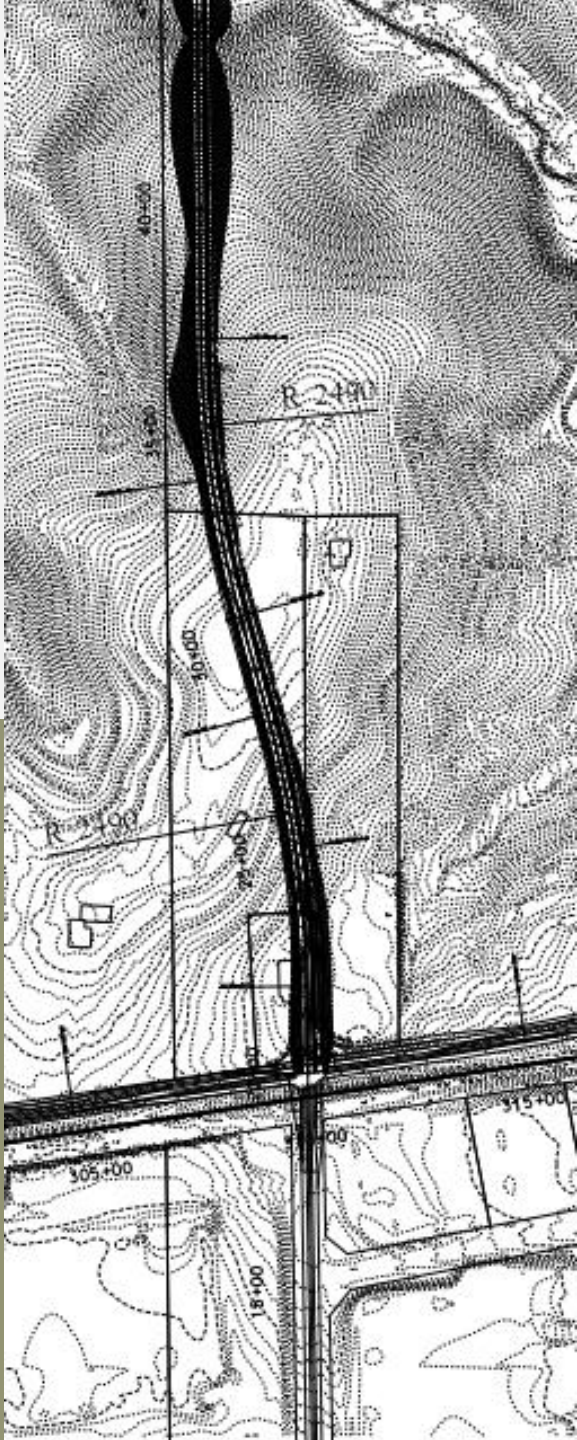
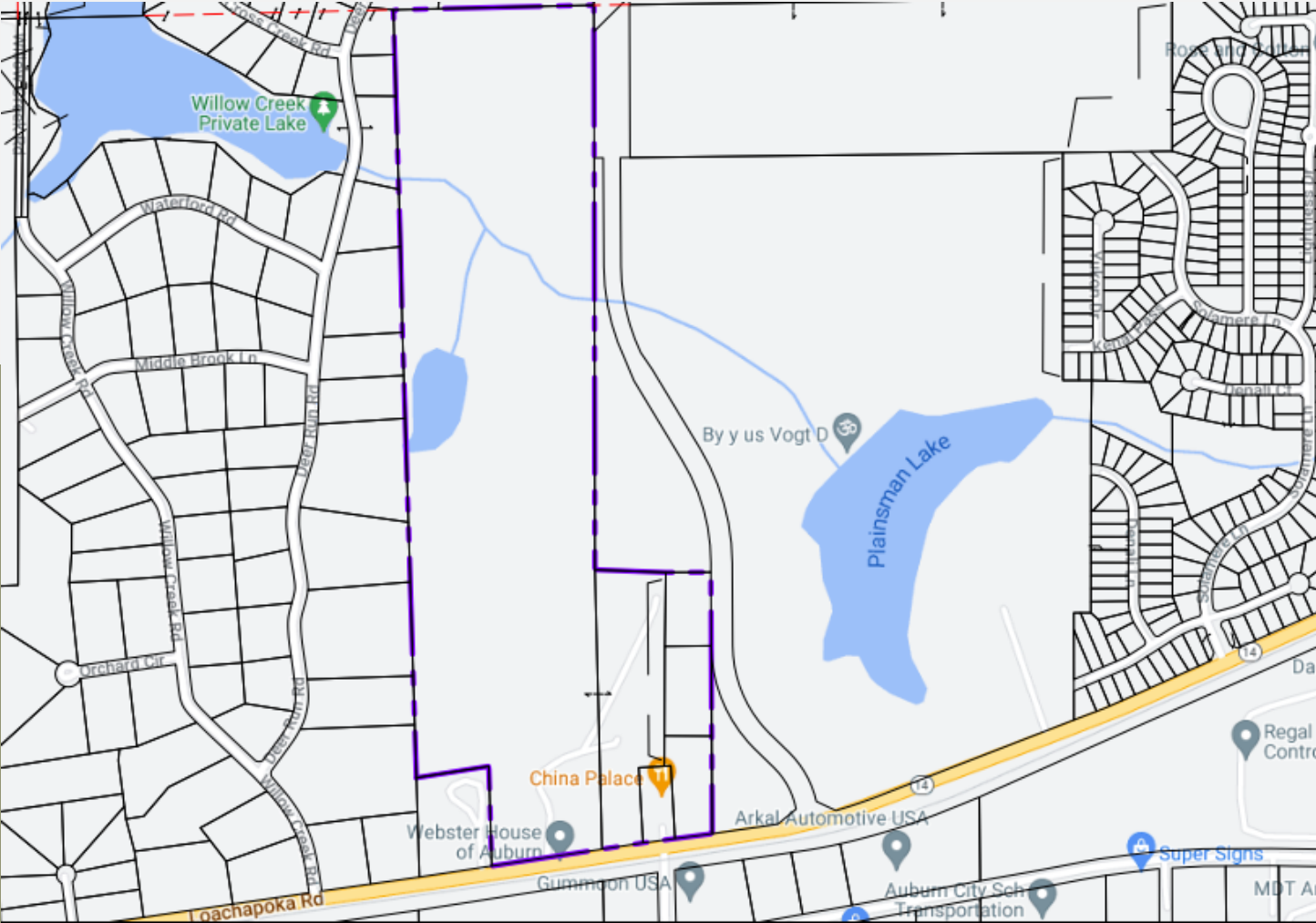
Upon review of the phase II report, we agree with the author's findings. This site (1LE560) is not a cemetery and is not eligible for listing on the National Register of Historic Places. Therefore, we concur that project activities may proceed in this location.

Phase II Investigations at Site 1LE560

Major Drainage Crossings



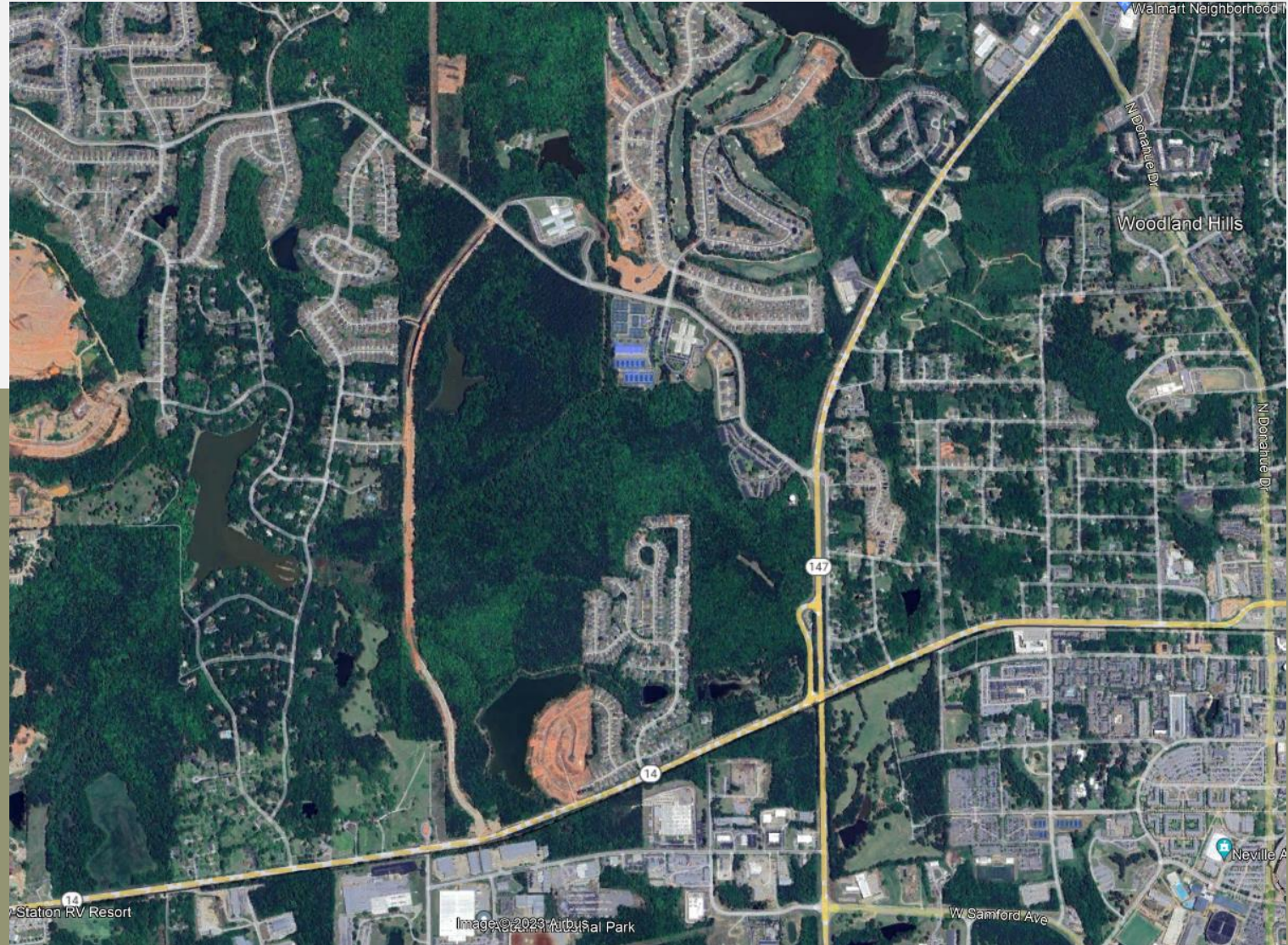
Property Owners



Webster Road @ SR-14



Recent Aerial View



Intersection @ SR-14



Signals @ SR-14



Railroad



RIGHT-OF-WAY AND TRACK MAP THE WESTERN RAILWAY OF ALABAMA MAIN LINE

STATION 1470+20 TO STATION 1681+40
SCALE 1 IN = 400 FT JUNE 30, 1918

PART OF PROJECT 5-400.
AUBURN-NOTASULGA
From A.+V.P. Mile Post, M-55 to M-58
Showing Distance & P.R. to Construction on
Highway.
No Scale

Utilities



Construction



Construction

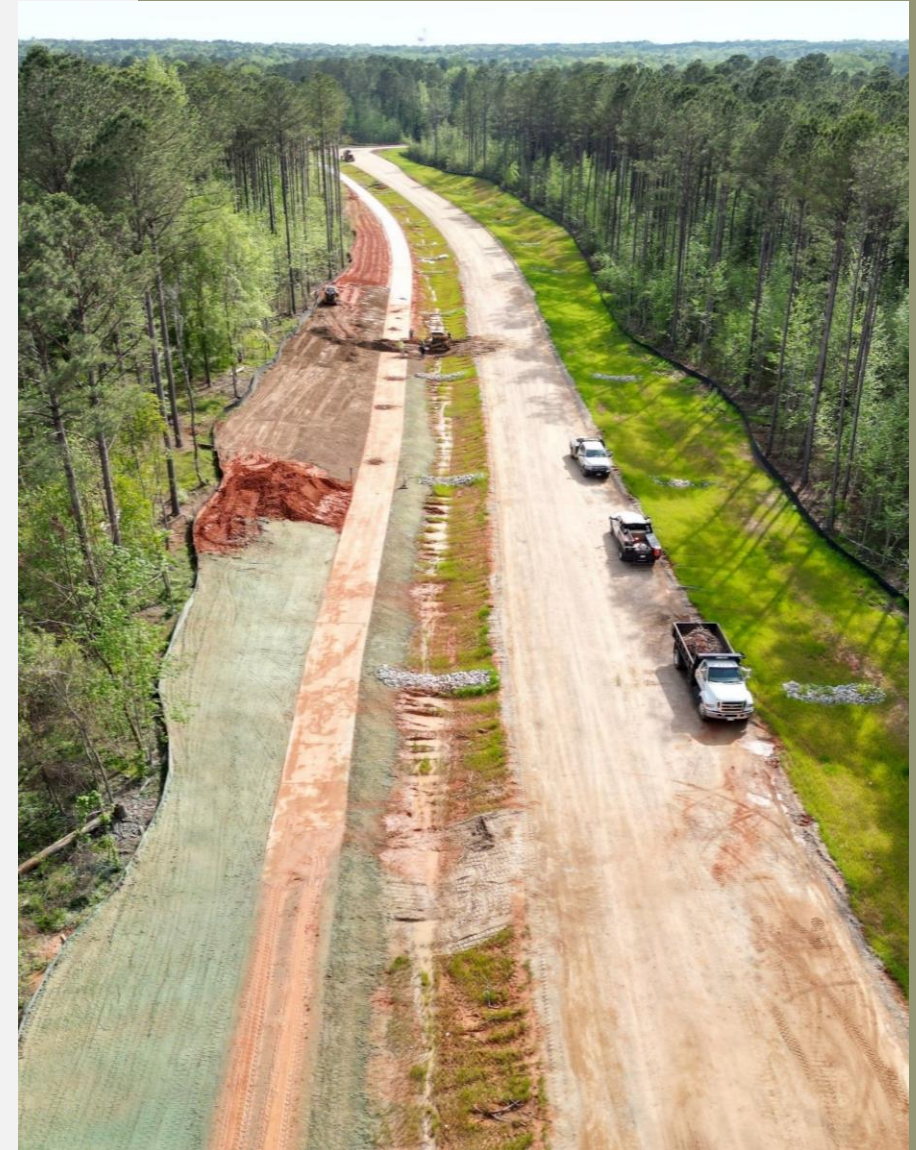




**Will Buechner Parkway
Auburn, Alabama**

Completion

- D&J Enterprises
- Total capital budget of \$8,348,000
- Substantial completion achieved in late October
- Parkway dedication and opening occurred on January 8th





QUESTIONS?

Nathan Currie, P.E.

Infrastructure Team Leader / Associate
ncurrie@sain.com



SAIN
ASSOCIATES