

# I-85 and South Perry St Bridge Incident



| Sunday                                   | Monday   | Tuesday  | Wednesday  | Thursday  | Friday  | Saturday |
|--|--|--|--|---|---|----------|
| Jul 30                                   | 31   | <b>Aug 1</b><br>AREA BRIDGE INSPECTION MEETING - AREA OFFICE   | 2<br>TRAFFIC SIGNAL MEETING - AREA OFFICE  | 3<br>30% SCOPE REVIEW; ELMORE COUNTY; REGION OFFICE   | 4   | 5        |
| 6  | 7<br>SICK CHILD; GOD'S COUNTRY - COOSA COUNTY ALABAMA  | 8<br>PLAN-IN-HAND BULLOCK COUNTY; AREA OFFICE  | 9<br>DISTRICT TEMPORARY TRAFFIC CONTROL REVIEW - DISTRICT 1<br>RESURFACING SCOPE OF WORK - DISTRICT 1; AUTAUGA / ELMORE COUNTIES | 10<br>INTERSTATE PENINSULA TELECONFERENCE MEETING; REGION OFFICE<br>TRAFFIC IMPACT STUDY - AUBURN PERMIT; DISTRICT 6 - LEE COUNTY | 11  | 12       |
| 13                                       | 14<br>INTERSTATE PENINSULA MEETING ( REGION DISCUSSION ); REGION OFFICE<br>TOP SECRET PERMIT ACCESS MEETING; REGION OFFICE | 15<br>INTERSTATE SIGN MEETING; REGION OFFICE<br>PLAN - IN - HAND; AUTAUGA COUNTY; AREA OFFICE        | 16<br>INTERSTATE PENINSULA MEETING; REGION OFFICE  | 17<br>ON-SITE PERMIT ACCESS MEETING; LEE COUNTY   | 18<br><b>FISHING WITH THE BOYS - THE GREAT BLUE OCEAN</b> | 19       |
| 20<br><b>FISHING WITH THE BOYS - THE</b> | 21<br>ON-SITE PERMIT MEETING - DISTRICT 5  | 22<br>AREA PERMIT DISCUSSION - AREA OFFICE<br>DISTRICT TEMPORARY TRAFFIC CONTROL REVIEW - DISTRICT 3 | 23<br><b>MAINTENANCE MANAGEMENT - MONTGOMERY</b>   | 24  | 25  | 26       |
| 27                                       | 28<br>PERSONELL MEETING; AREA OFFICE   | 29<br>JESSE'S PERSONAL DAY - REST AND RELAXATION; COOSA COUNTY ALABAMA                               | 30   | 31<br>DISTRICT TEMPORARY TRAFFIC CONTROL REVIEW - DISTRICT 4  | <b>Sep 1</b>  | 2        |

# Why is my calendar important?

## Work Summary

- District Meetings- 7 Days
- Area Meetings- 4 Days
- Region Meetings- 5 Days
- Permit Meetings- 2 Days
- Personnel Meetings- 1 Day
- Maintenance Management
  - 3 LONG Days

## Jesse's Summary

- Sick Child- 1 Day
- Fishing with the boys- 4 Days
- Jesse's Personal Day- 1 Day



|                                   |   |  |   |   |       |    |
|-----------------------------------|---|--|---|---|-------|----|
| 13                                | 14<br>INTERSTATE PENINSULA MEETING ( REGION DISCUSSION ); REGION OFFICE<br>TOP SECRET PERMIT ACCESS MEETING ; REGION OFFICE | 15<br>INTERSTATE SIGN MEETING ; REGION OFFICE<br>PLAN - IN - HAND; AUTAUGA COUNTY ; AREA OFFICE      | 16<br>INTERSTATE PENINSULA MEETING; REGION OFFICE | 17<br>FISHING WITH THE BOYS - THE GREAT BLUE OCEAN<br>ON-SITE PERMIT ACCESS MEETING; LEE COUNTY | 18    | 19 |
| 20<br>FISHING WITH THE BOYS - THE | 21<br>ON-SITE PERMIT MEETING - DISTRICT 5   | 22<br>AREA PERMIT DISCUSSION - AREA OFFICE<br>DISTRICT TEMPORARY TRAFFIC CONTROL REVIEW - DISTRICT 3 | 23<br>MAINTENANCE MANAGEMENT - MONTGOMERY         | 24  | 25    | 26 |
| 27                                | 28<br>PERSONELL MEETING; AREA OFFICE  | 29<br>JESSE'S PERSONAL DAY - REST AND RELAXATION ; COOSA COUNTY ALABAMA                              | 30  | 31<br>DISTRICT TEMPORARY TRAFFIC CONTROL REVIEW - DISTRICT 4                                    | Sep 1 | 2  |



August 29  
6:00 AM



August 29  
7:25 AM





August 29  
7:25 AM

Four vehicle collision including a tractor trailer hauling lumber occurred on I-85 South at milepost 0.9 at the South Perry Street bridge overpass



# Initial Response Teams

- All members of the Area Maintenance staff were called into action
  - District, Bridge, Operations, Traffic, Hazardous Materials, and even Permits
- Montgomery Fire and Rescue
- Montgomery Police Department
- Alabama Law Enforcement Agency (ALEA)
- City of Montgomery Maintenance Department
- Contractors
  - McInnis Construction
  - Scott Bridge Company
  - Newell & Bush
  - Bridge Builders of Alabama
- ALDOT EBIT Team
- ALDOT Leadership and various Bureaus

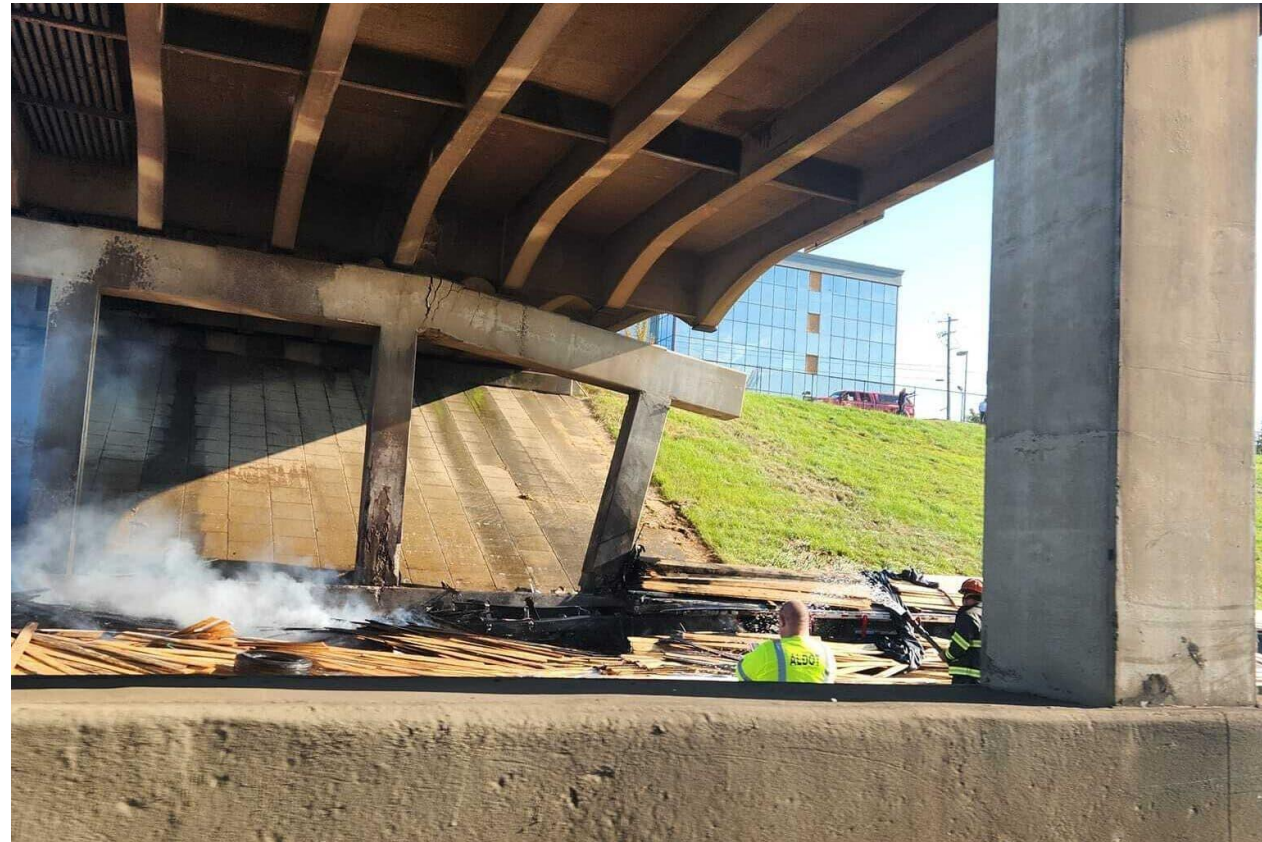


# Issues on arrival at scene

Traffic



Bridge





# Traffic Issues

- I-85 South was closed
  - Never good
- It was closed at rush hour
  - Really not good
  - AADT- 125, 000
- Detours were needed
- Open the interstate



# Bridge Issues

- South Perry Street bridge was closed
  - Even local traffic was hesitant on crossing the bridge
- Bridge had received significant damage
- Remove debris
  - Can be a lengthy process (especially after a large collision)
  - This was needed to determine the extent of bridge damage
- Determine the extent of the bridge damage
  - EBIT on site
  - Collision damage
  - Fire damage
- Determine a repair for the bridge
  - This was based on the extent of the bridge damage
  - Timeline for this item would be a huge factor





“Relax. Look Around. Make A Call.”



# Traffic Operations

Two key activities working together

- Detour all I-85 South at Exit 6 (Eastern Boulevard)
- Detour all I-85 South at Exit 1 (Union Street/South Street)



# Traffic Operations

## Exit 6- Eastern Boulevard (US-231/AL-21)

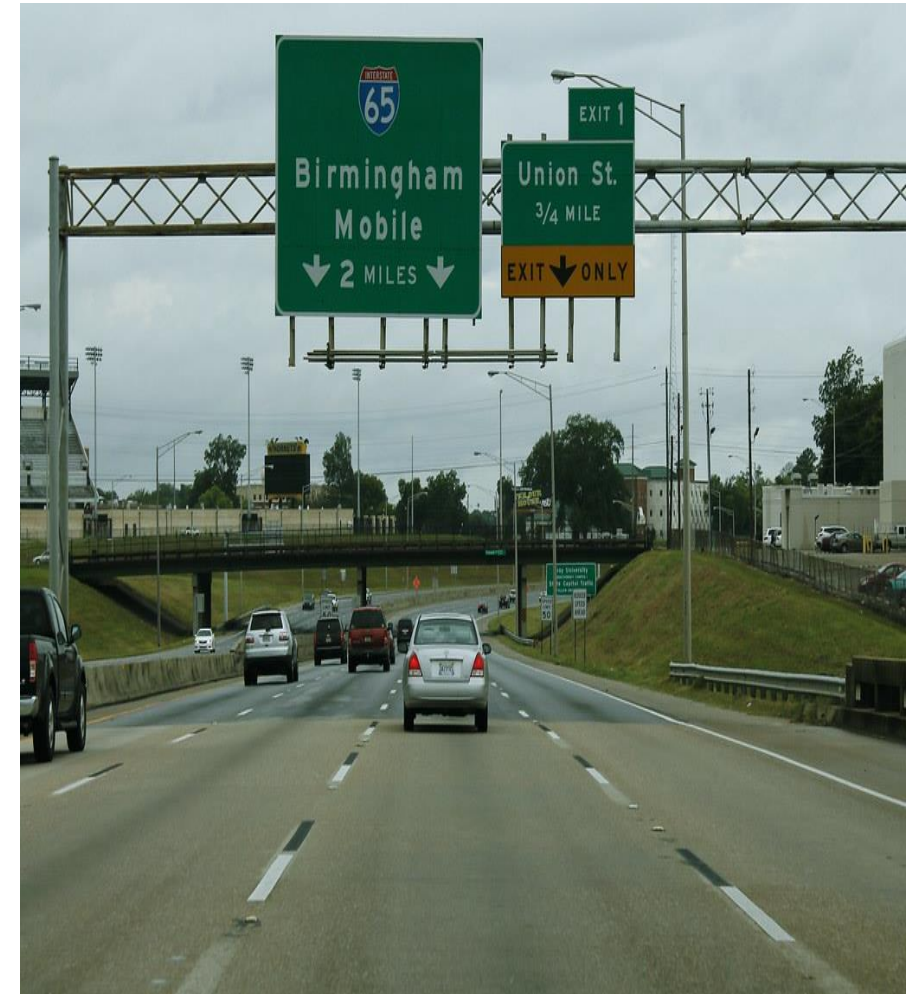
- All Southbound ramps closed and traffic detoured
- Installed traffic control devices ahead of and at Exit 6
- Region staff was a great asset
- Began continuous contact with Mrs. Brantley Kirk
- Detour in place and operational by noon August 29



# Traffic Operations

## Exit 1- Union Street

- Closed South Perry Street bridge overpass
- Closed South Lawrence Street bridge overpass
- Closed South Court Steet bridge overpass
- Closed all intersecting city streets to South Street
- All signals in flash along the corridor
- Installed traffic control on I-85 at Exit 1



# Traffic Operations

## Exit 1- Union Street



# Traffic Operations

## Final Traffic Pattern

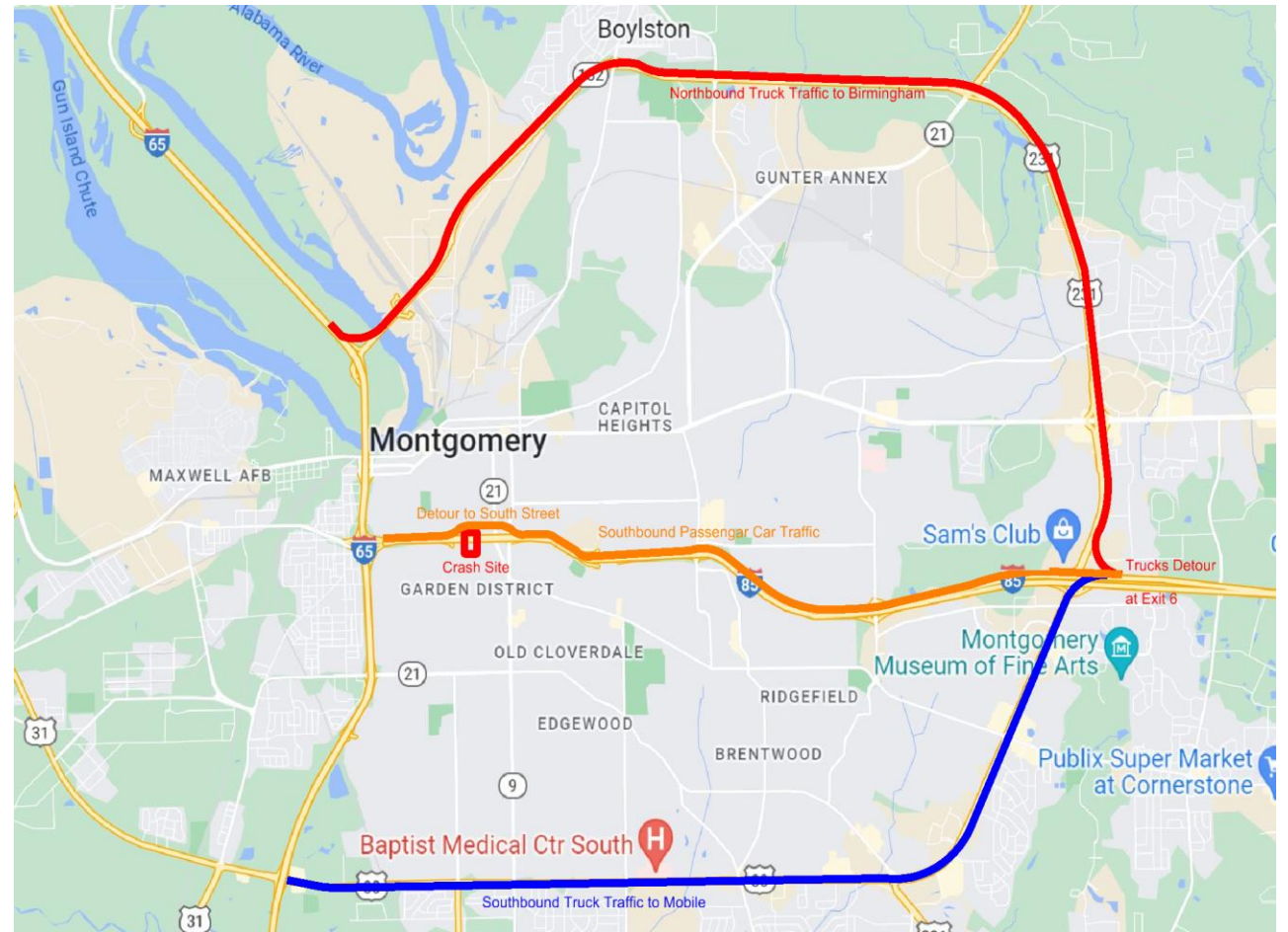
- I-85 South passenger traffic detoured onto Exit 1 off ramp
  - Travel South Street for approximately ½ mile to reenter I-85 South at Exit 1 entrance ramp
- I-85 South truck traffic detoured at Exit 6- Eastern Boulevard
- Huge group effort to put in place
  - District Staff
  - Area Staff
  - Region Staff
    - Mrs. Brantley Kirk
  - City of Montgomery
    - Maintenance Department
    - Police Department
  - ALEA



# Traffic Operations

## Final Traffic Pattern

- Operational by 3:00 p.m. August 29
- Traffic was handled
  - Sigh of relief



# Bridge Operations

## Initial Unknowns

- South Perry Street bridge was closed
- Bridge was significantly damaged
- Contractors notified of emergency work
  - McInnis Construction
  - Scott Bridge Company
  - Newell & Bush
  - Bridge Builder's of Alabama
- ALDOT EBIT team arrived on site to assess bridge damage

# Bridge Operations

## Debris Removal

- Needed to determine full extent of damage
- City of Montgomery Maintenance Department





# Bridge Operations

## Bridge Damage

Determined that the bridge column and a portion of the bridge cap received substantial damage





# Bridge Operations

## Bridge Damage



# Bridge Operations

## Determining Bridge Damage

- Remove all damaged portions of the bridge
  - Determine full extent of bridge damage
  - Determine full scope of bridge repair
- Solution
  - Replace bridge to previous condition
  - Include repouring cap and column



# Bridge Operations

## Letting Process: Two separate phases

- **Emergency Work- Force Account**

- Temporary shoring (Located on I-85 South)
- Removal of damaged bridge sections
  - To determine full extent of damage
- Temporary shoring (located on backslope)
- Install traffic control devices
  - Allows bridge work to progress
  - Open two lanes of traffic

- **Contract Work- Lowest Bid**

- Jack the bridge
- Rebuild cap and column
- Rebuild crash wall
- Install guardrail and rebuild curb
- Mill and replace OGFC layer
- Traffic strip

# Bridge Operations

## Emergency Work

- McInnis Construction arrived on site
- Cleared to begin emergency bridge repairs
- Force Account
- McInnis Construction
  - collaborated with Newell & Bush and Bridge Builders of Alabama
- Emergency Work
- \$443,076.52

# Bridge Operations

## Emergency Work

- Bridge deemed stable once emergency work was complete
- Allowed two left lanes to be open to traffic
  - Opened to traffic August 30 at 10:00 am
- HUGE sigh of relief



# Bridge Operations

## Lowest Bid

- Bids went out September 1 at 3:30 p.m.
- Awarded based on lump sum
- Work to progress around the clock
- Plans developed by Region staff

# Bridge Operations

## Lowest Bid

- Contract was awarded on September 5 at 5:00 pm to McInnis Construction
- \$841,294.68
- All contractual items turned over to Area Construction staff
- South Perry Street bridge opened the afternoon of September 12
- All lanes on I-85 South opened the morning of September 14

# Summary

## Crash occurred August 29<sup>th</sup> at 7:25 am

- Exit 6 detour installed August 29<sup>th</sup> at noon
- Exit 1 detour installed August 29<sup>th</sup> at 3:00 pm
- Emergency work
  - Initiated August 29<sup>th</sup> at 10:00 am
  - Completed August 30<sup>th</sup> at 10:00 am
- I-85 South open to two lanes August 30<sup>th</sup> at 10:00 am
  - Approximately 24 hours later
- South Perry Street bridge opened September 12<sup>th</sup>
  - Approximately two weeks later
- All lanes open on I-85 South morning of September 14<sup>th</sup>
  - Approximately two weeks later



# Lessons Learned

- Trust your people
- Communication
  - Brantley Kirk and Ty Tyler most useful during the entire event
- Working together towards a common goal
  - ALDOT staff and Bureaus
  - State contractors
  - City of Montgomery staff

# I-85 and South Perry St Bridge Incident

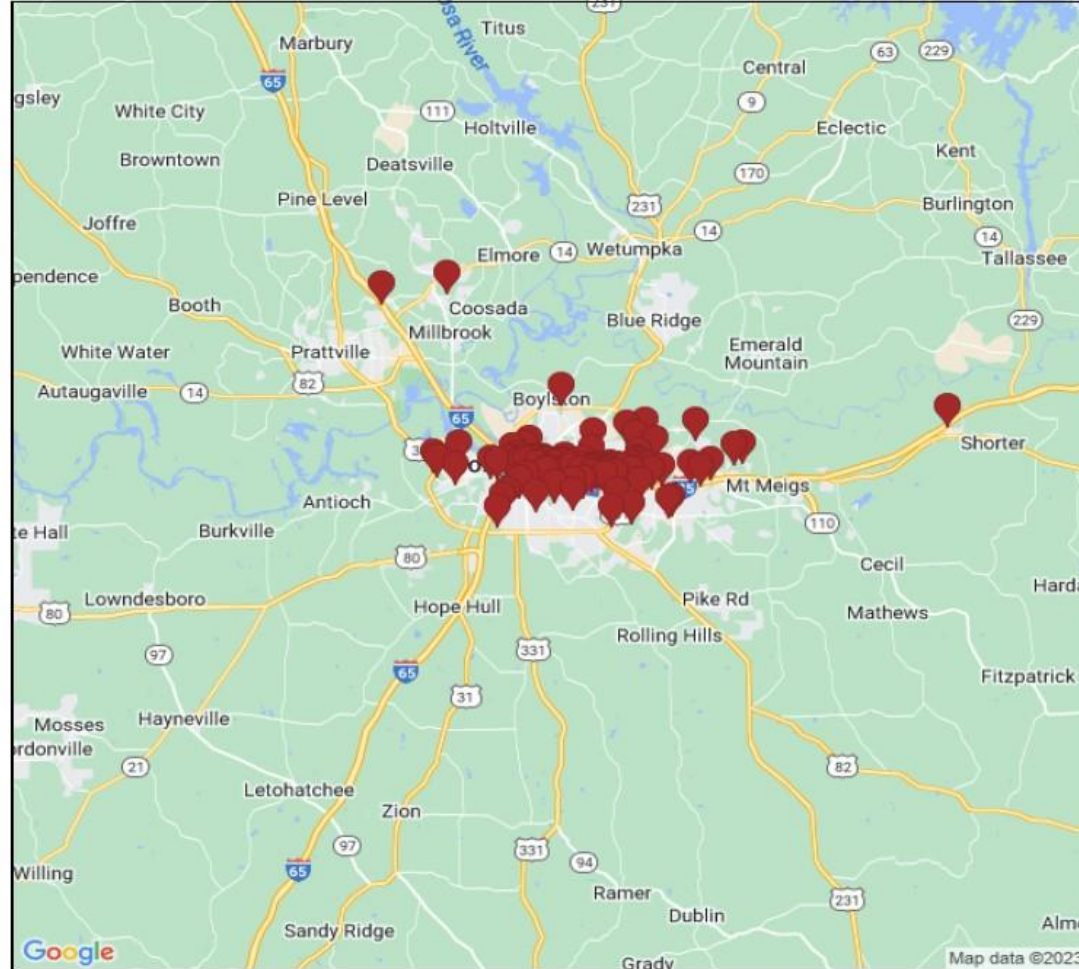
External and Internal  
Communications



# August 29, 2023

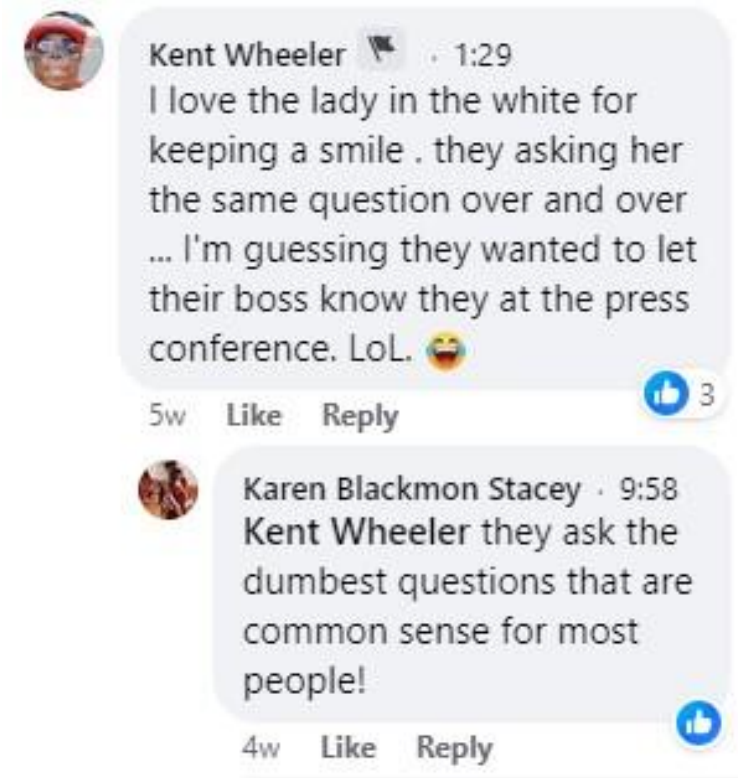
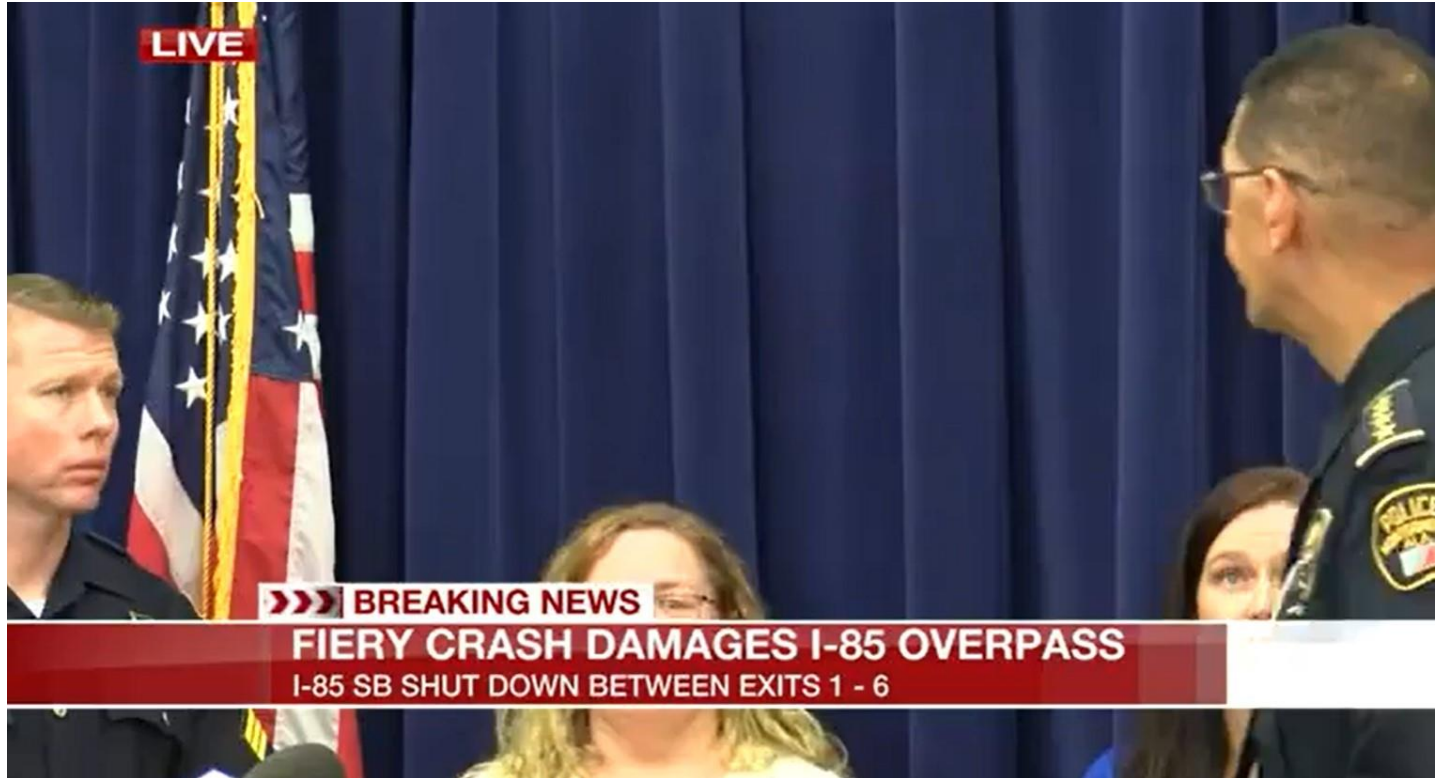
## ALDOT: I-85 S MM 1 closed. Detour Exit 1/ Union Str.

Major crash on I-85 south at MM 1 all lanes are closed. Detour route at Exit 1/ Union Str. onto South East Street then back to I-85 South. Please use caution when traveling through this area.





# August 29, 2023



August 30, 2023





August 31, 2023



# Labor Day Weekend



**FOR IMMEDIATE RELEASE**  
**September 1, 2023**

## **South Perry Street bridge remains closed; emergency repairs complete**

**MONTGOMERY, Ala.** – Contractors with the Alabama Department of Transportation have completed emergency repairs to the South Perry Street bridge over Interstate 85 south in Montgomery.

The South Perry Street bridge will remain closed to all vehicles and pedestrians until permanent repairs are finished.

ALDOT has completed the inspection of the bridge and is finalizing plans that will take bids and be awarded on Tuesday afternoon with work to begin as soon as possible. The permanent repairs are expected to take approximately three weeks.

Two lanes on I-85 South will remain open through the weekend and during repairs.

Motorists should seek alternate routes or expect delays when traveling I-85 South and be mindful of people and equipment in the area.

###





September 5, 2023



# September 12, 2023



**ALDOT Southeast Region**  
@ALDOT\_SERegion



ALDOT is reopening the South Perry Street bridge!!! Other work on I-85 South will continue but the S. Perry St. bridge is open to traffic.



3:09 PM · Sep 12, 2023 · 2,757 Views



September 15, 2023

