

Future Airport

Oak Ridge, TN

GMC

Goodwyn Mills Cawood

Building
Communities



www.gmcnetwork.com

The Manhattan Project

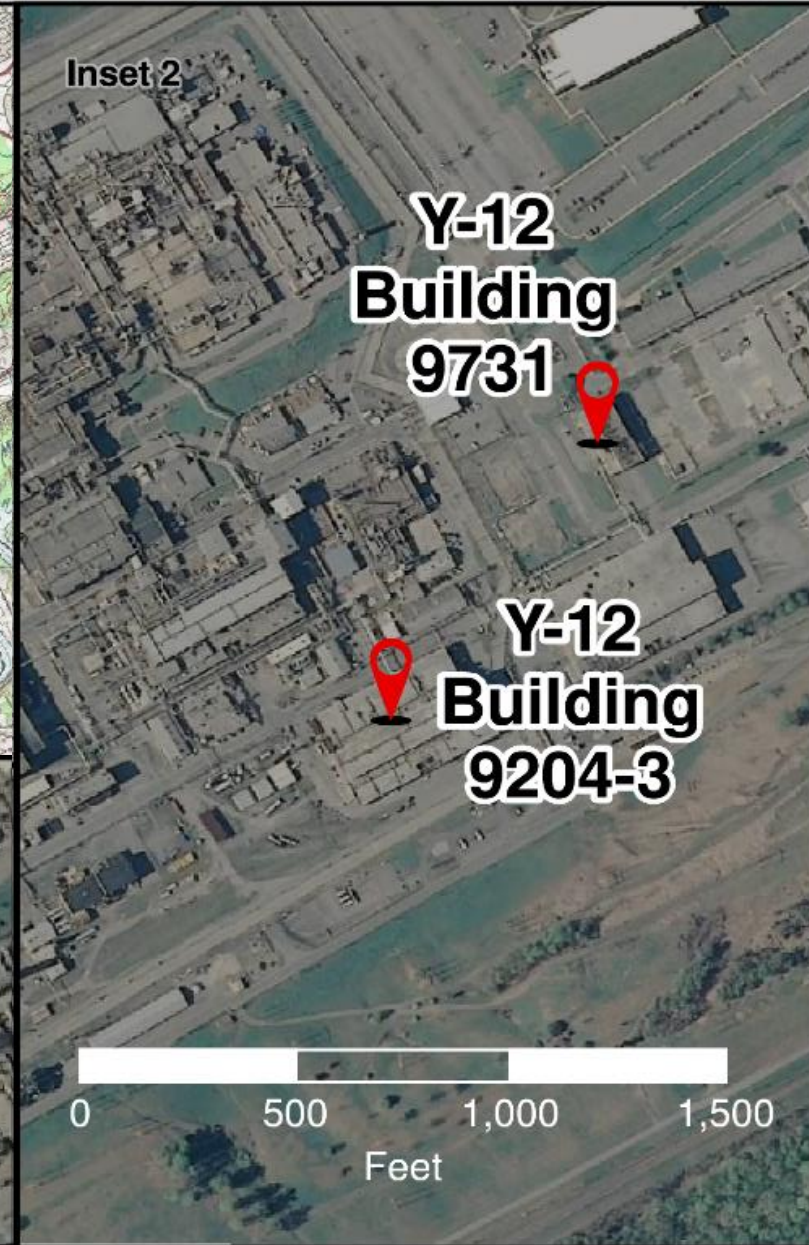
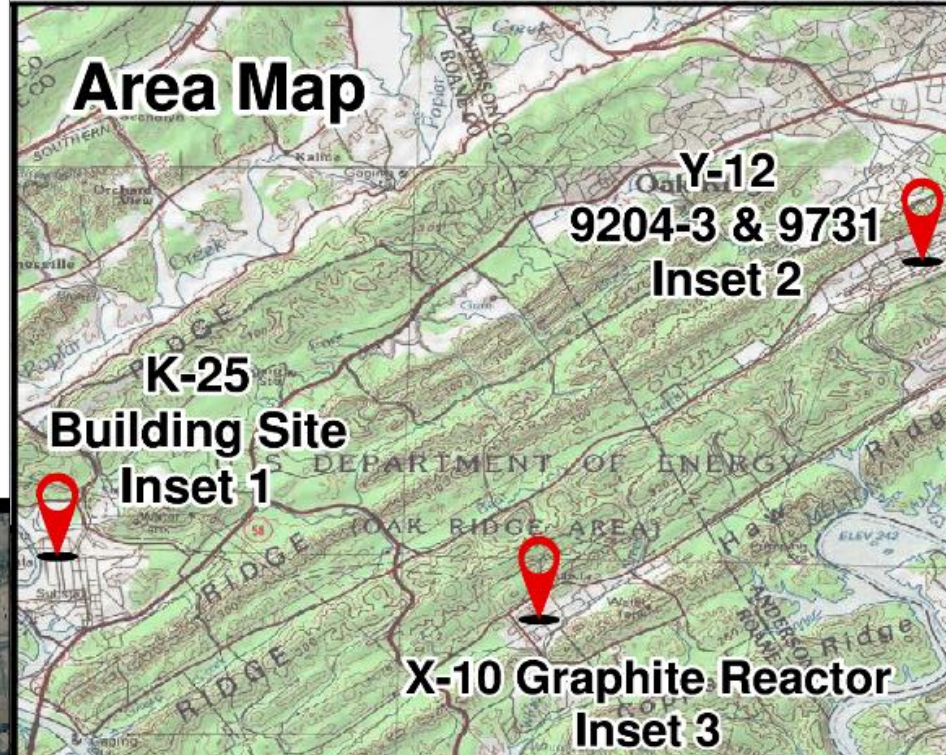
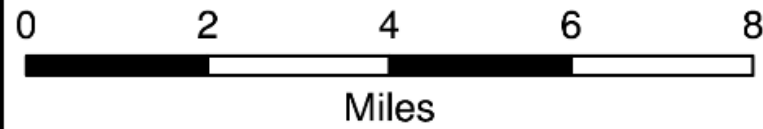
Legend



Proposed Sites



N



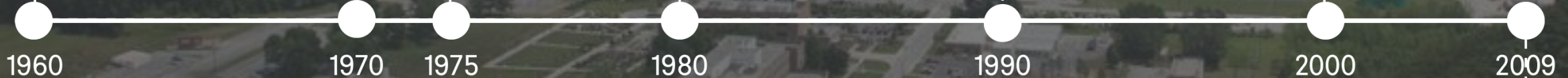
City of Oak Ridge, Tennessee



Purpose and Need

Need for a New General Aviation Airport in Oak Ridge Recognized by Local Civic Leaders for over 5 Decades

Seperate Site Selection
Studies Conducted



Metropolitan Knoxville Airport Authority (MKAA) Sposored a Preliminary Study
to Establish an Airport on the Oak Ridge Reservation

The preliminary study began a multi-phase, multi-year process
that established the purpose and need to:

1. Improve aviation access to the Knoxville MSA
2. Improve air safety and efficiency
3. Satisfy un-met aviation demand

Purpose and Need

Purpose and need was confirmed through the completion of several documents from 2009 to today.

These studies established the need, identified a preferred location and placed the airport on the NPIAS, making it eligible for federal funding.



2013* Placed a new Oak Ridge Airport on the National Plan of Integrated Airport Systems (NPIAS)

2016* Property Transfer for General Aviation Airport

Alternative Sites



Horizon Center Site

Heritage Center Site (Concept 3)

Heritage Center Site (Preliminary Engineering)

ED-3 Site

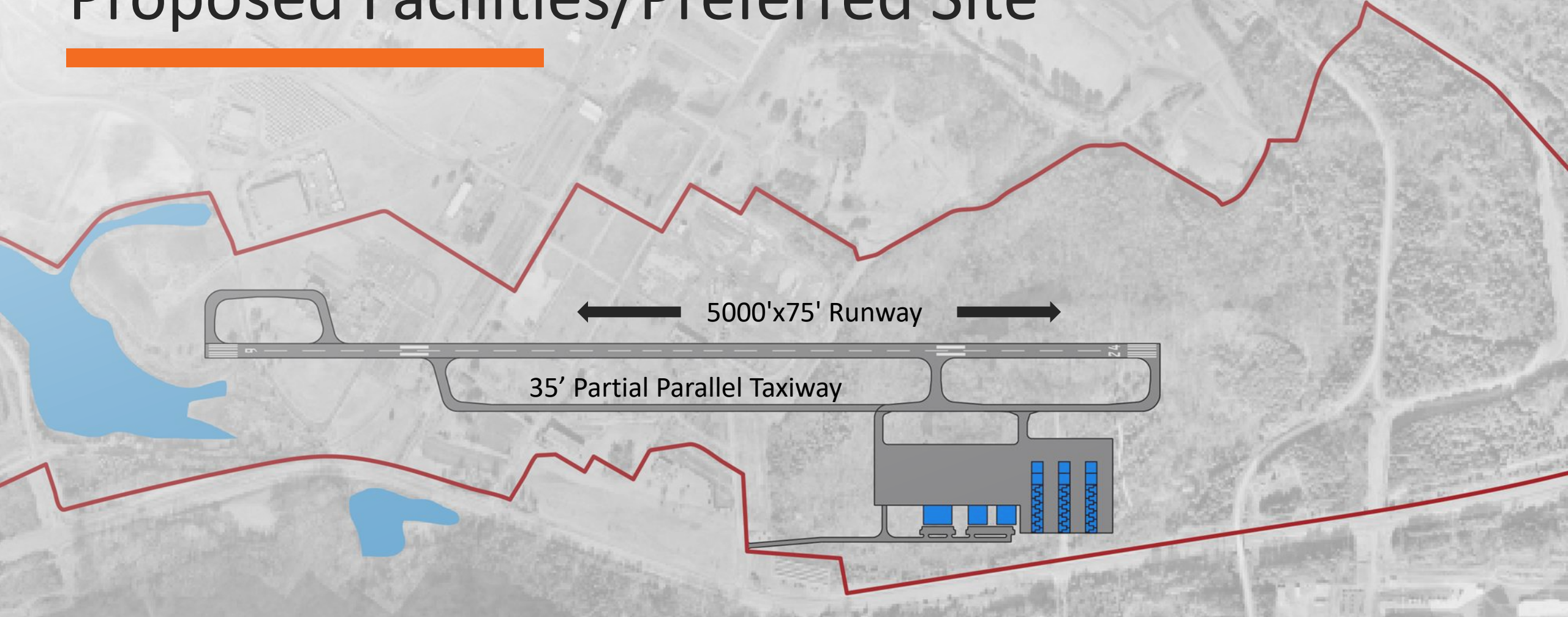
Highway 58

Highway 327


Highway 95



Proposed Facilities/Preferred Site



Legend

 Property Line

Project Challenges

Utilities

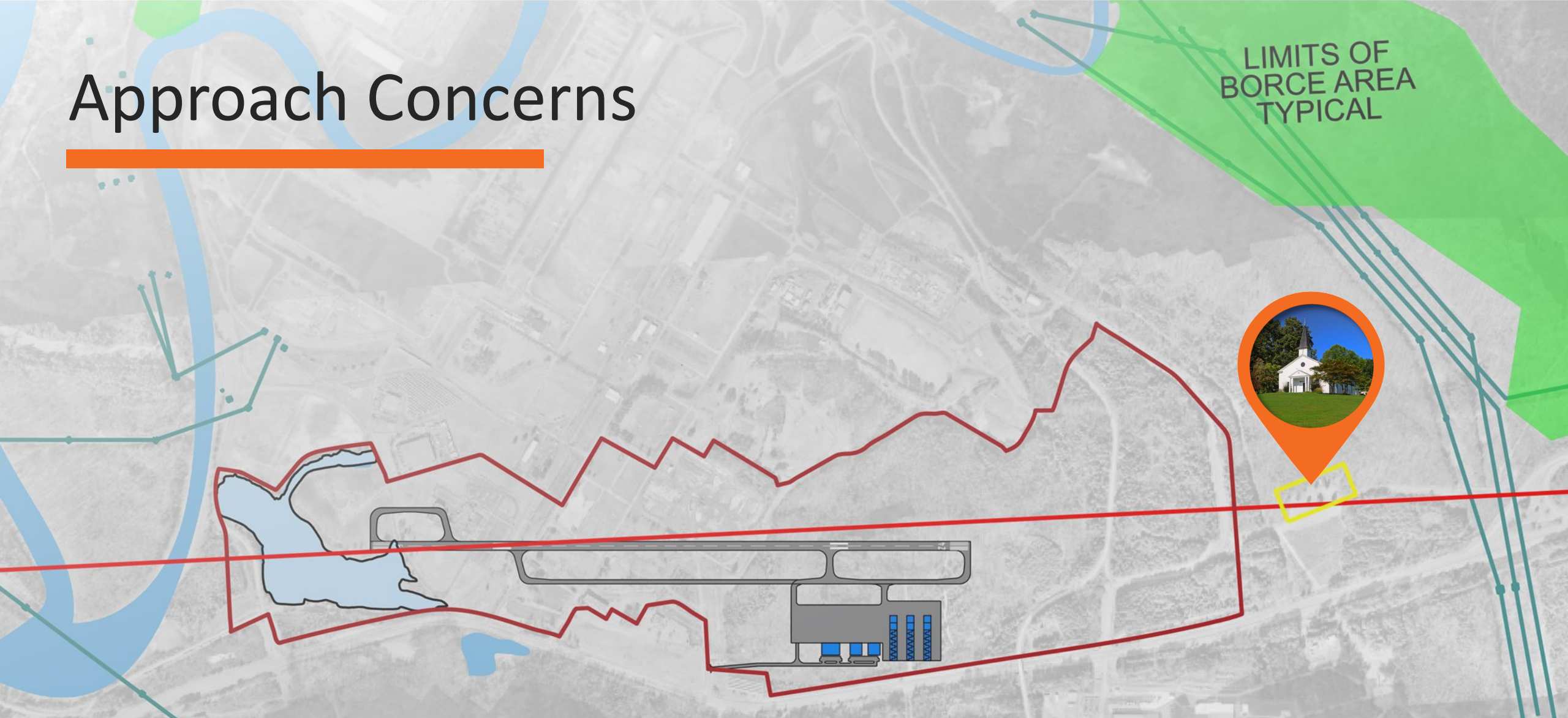


Legend

- Existing OH Transmission Lines
- Existing Gas
- Existing Power
- Existing Sewer
- Existing Water








Approach Concerns



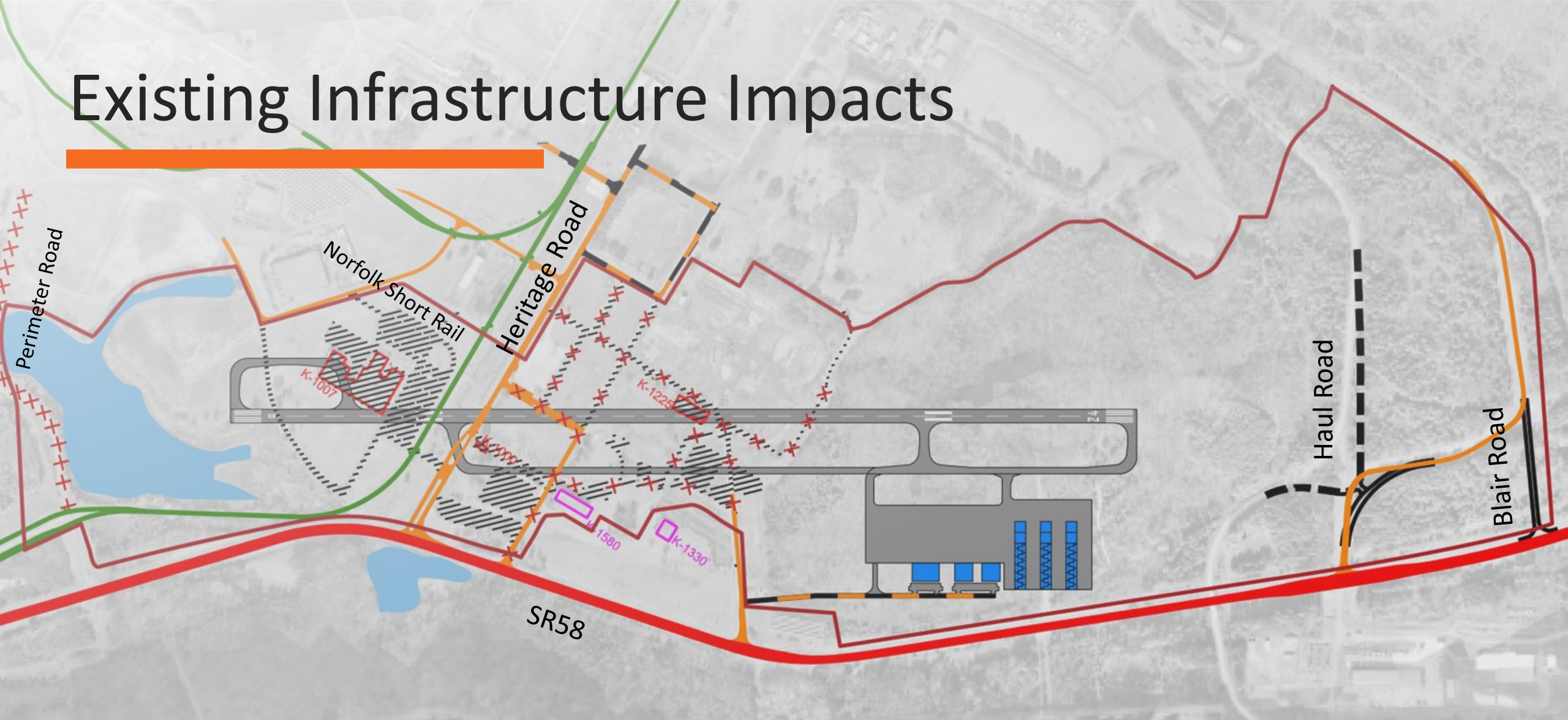
LIMITS OF
BORCE AREA
TYPICAL



Legend

-  Property Line
-  BORCE Limits
-  EX OH Transmission Lines
-  Runway Centerline Initial ALP
-  Wheat Church & Cemetery

Existing Infrastructure Impacts



Legend

Property Line

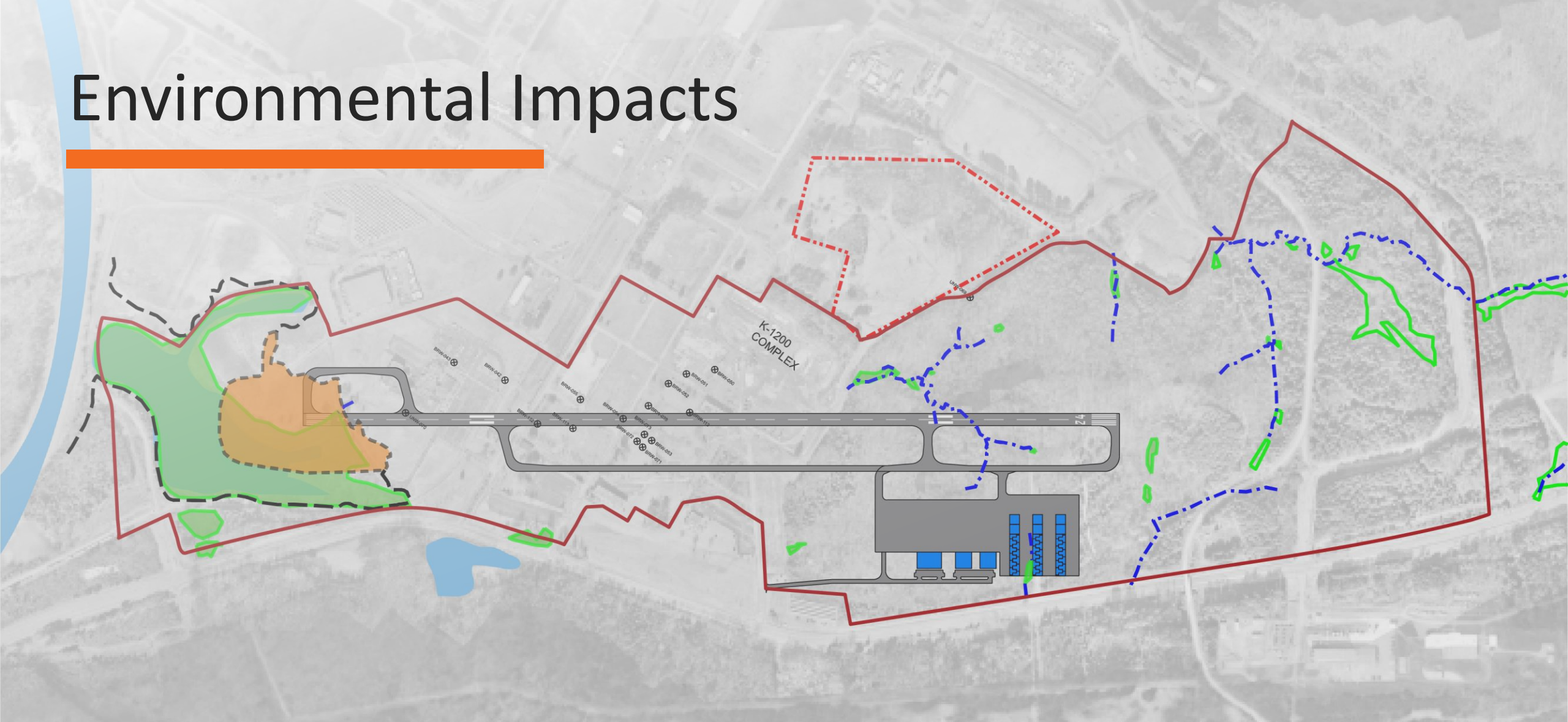
Blair Rd Relocation

Haul Rd Proposed REL






Railroad

Road Closures/Demo

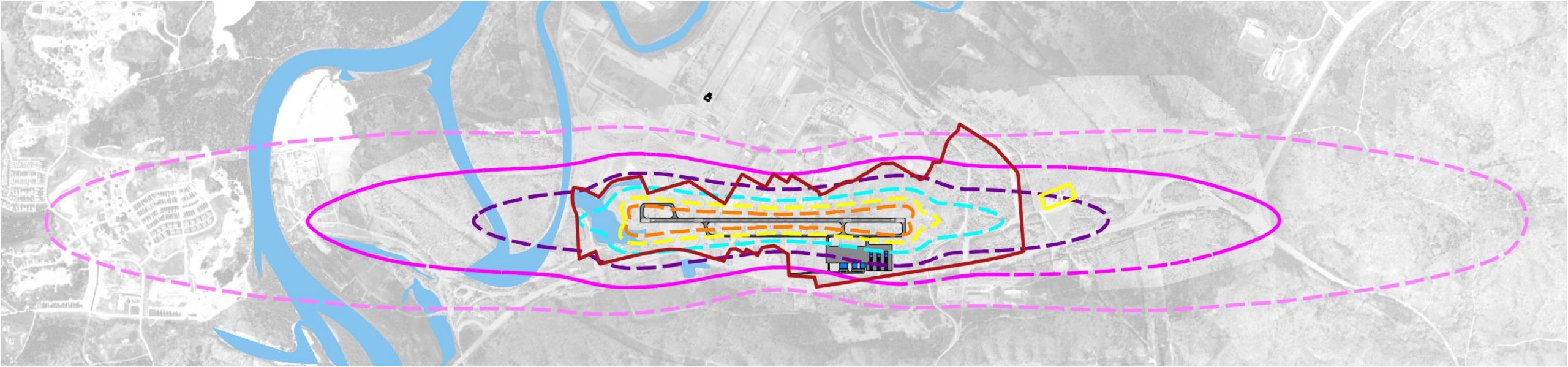
Environmental Impacts





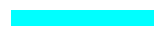




Legend

-  Property Line
-  Classified Landfill Limits
-  EX Floodplain Impacts
-  Streams
-  Wetlands

Noise Impacts



Legend

	Property Line		75dB		65dB		55dB
			70dB		60dB		50dB

Excavation

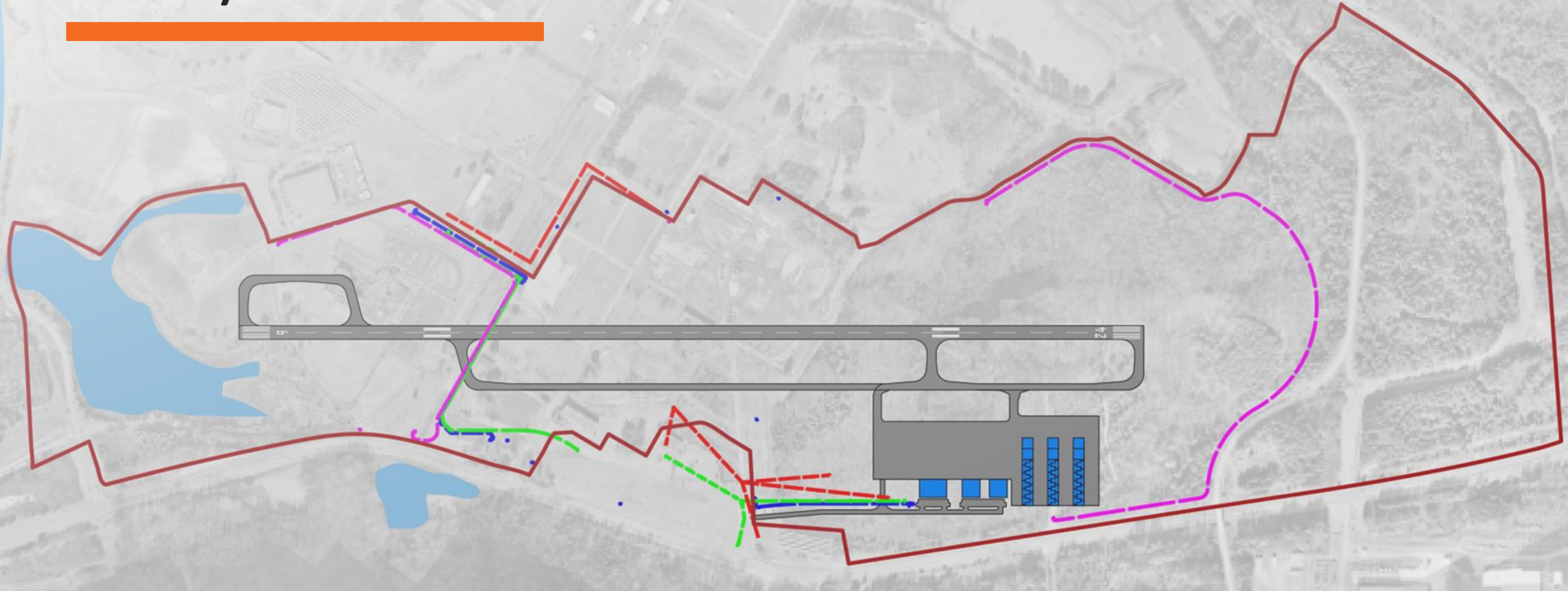


Legend

— Property Line

Engineering Solutions

Utility Resolutions




Legend

 Property Line

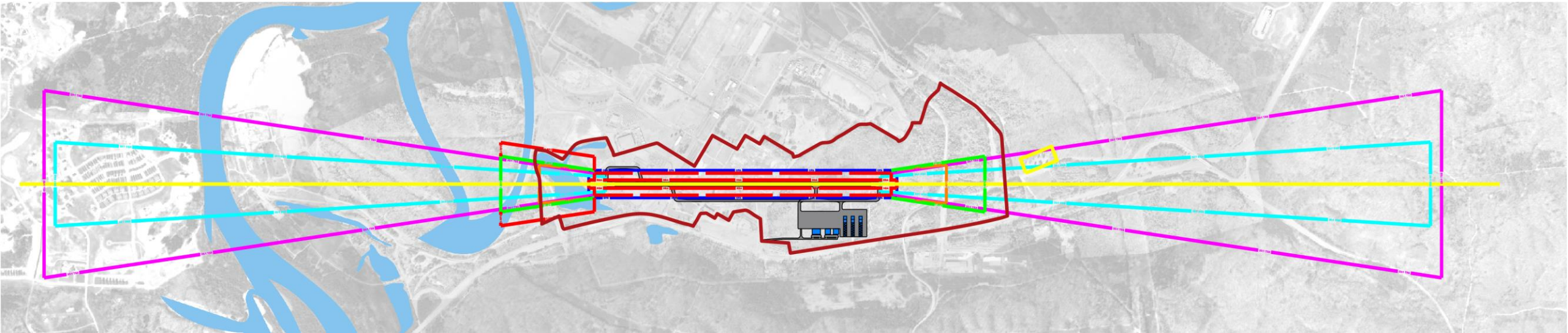
 Proposed Gas

 Proposed Power

 Proposed Sanitary/Sewer

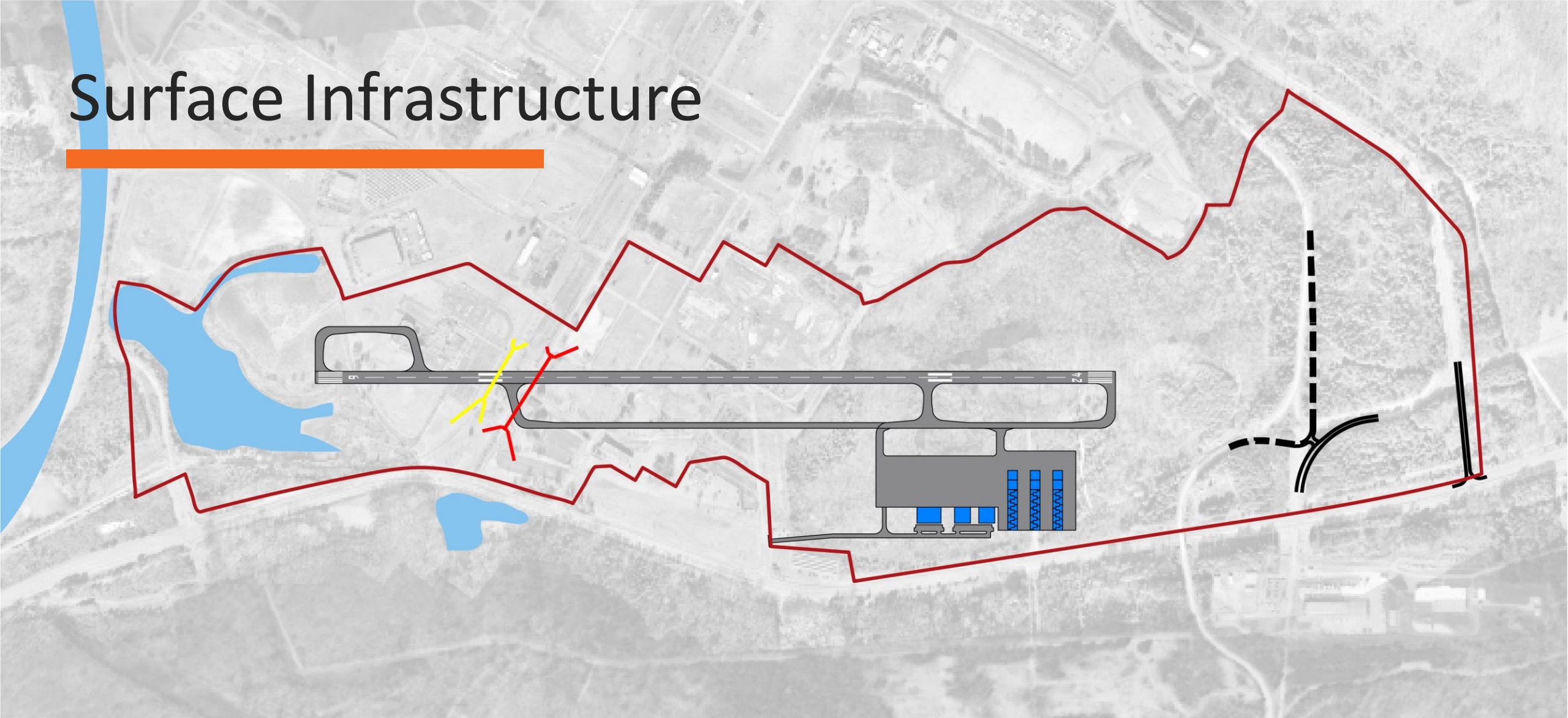
 Proposed Water

Approach Benefits








- Removes historic Wheat Church from extended runway centerline
- Reduces noise impacts
- Enabled vertical guidance to both ends of runway

Surface Infrastructure



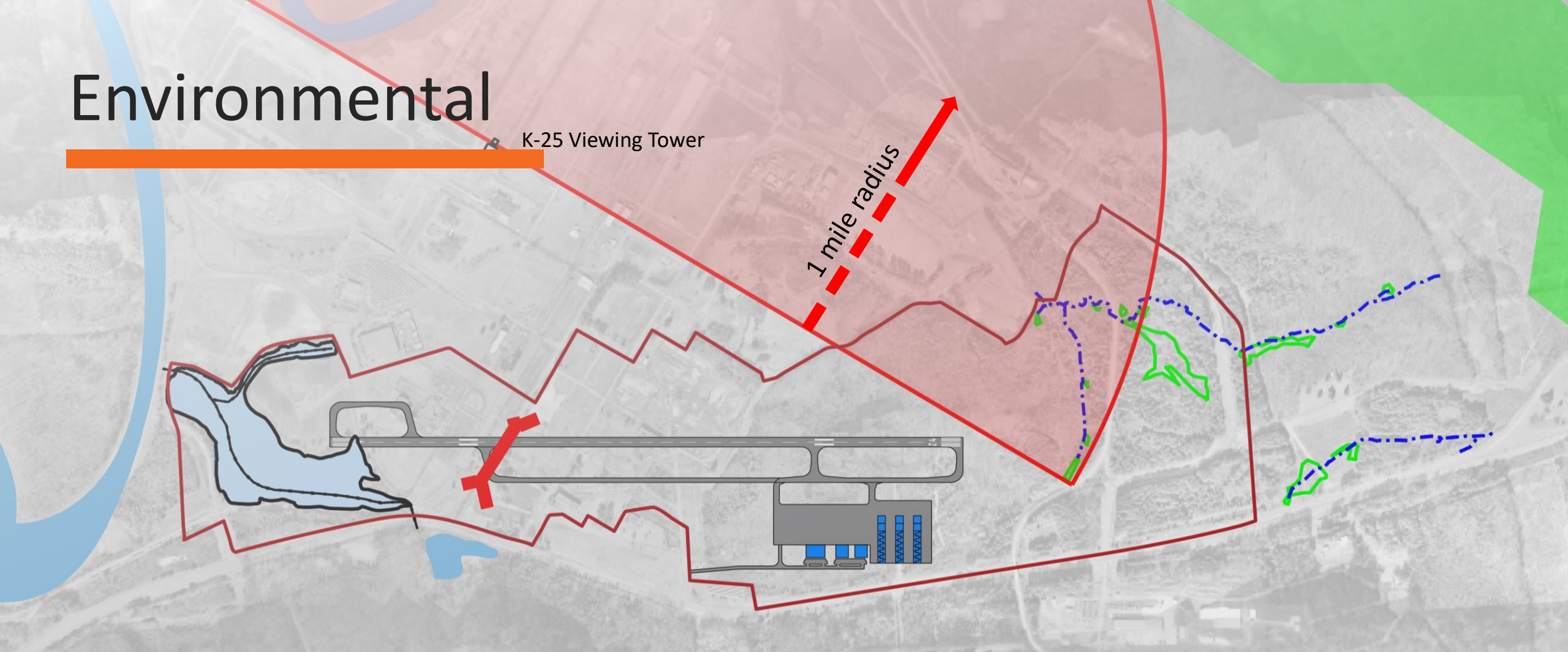
Legend

-  Property Line
-  Blair Rd Relocation
-  Haul Rd Proposed REL
-  New Rail Spur Tunnel
-  New Roadway Tunnel

Environmental

K-25 Viewing Tower

1 mile radius



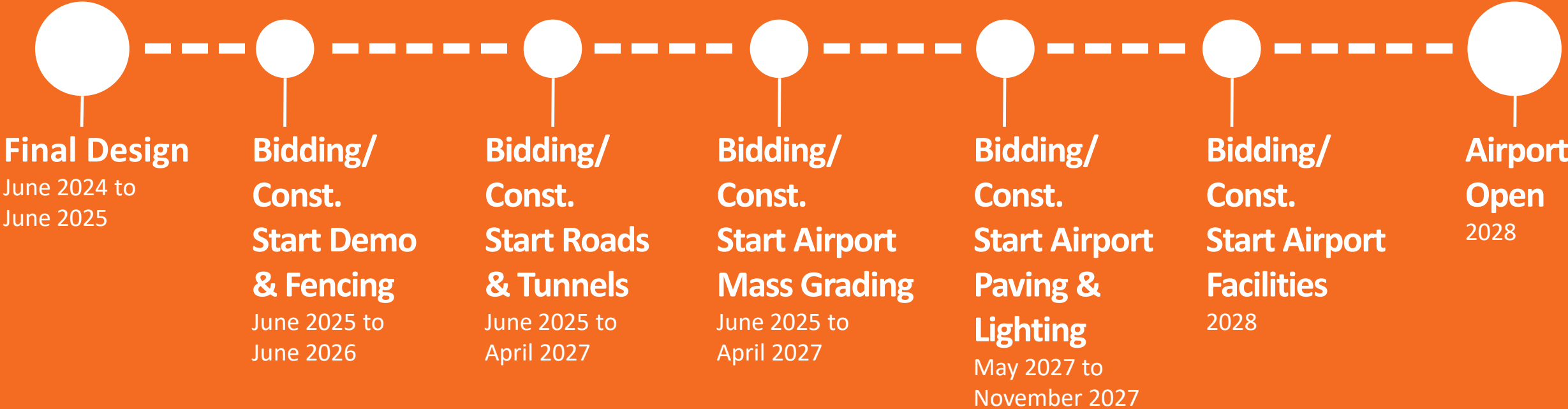
- Reduces wildlife habitat (trees) affected
- Removed identified streams between haul
- Removes viewshed impacts and enhances entrance to K-25 National Park
- Maintains access to the Heritage Center/ETTP/K-25 National Park
- On-site stream mitigation with creation of a new natural stream channel through closed/filled Pond 1

Terrain

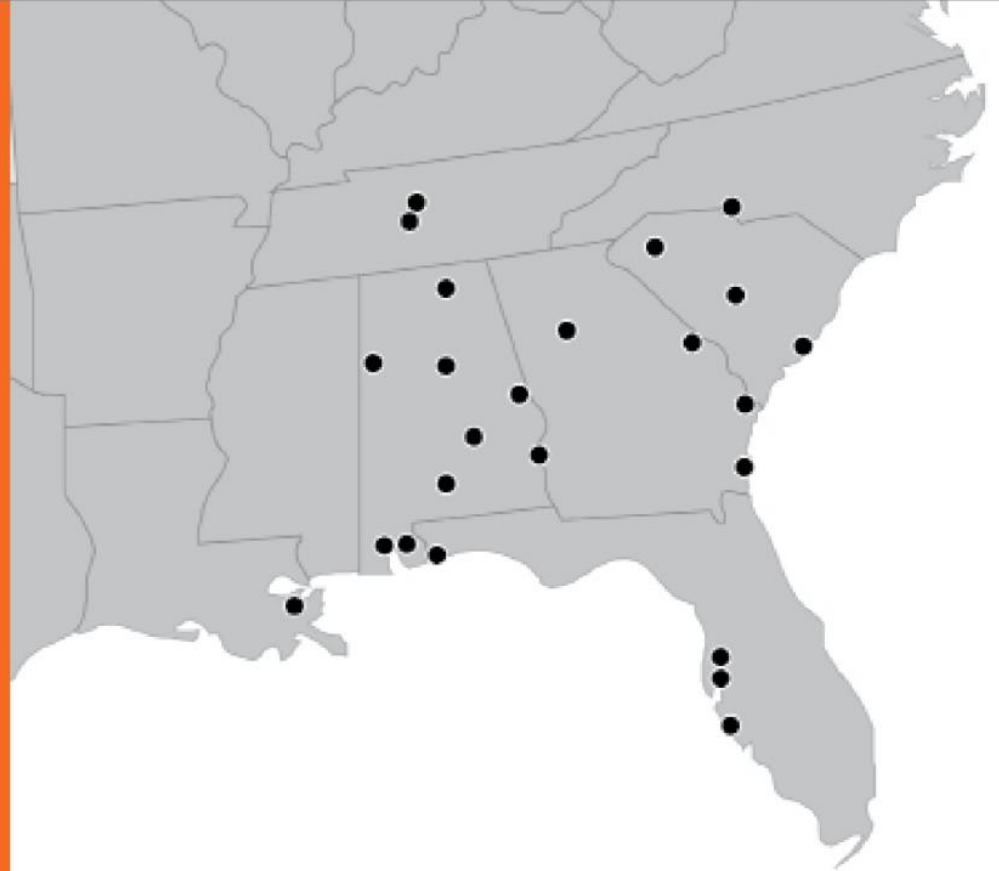


- Earthwork (3,600,000 cubic yards)

Project Timeline



Goodwyn Mills Cawood (GMC) is one of the region's largest employee owned architecture and engineering firms, with 550+ employees located in offices throughout the Southeast and projects spanning nationwide.



OFFICE LOCATIONS

Alabama

Andalusia
Auburn
Birmingham
Daphne
Eufaula
Huntsville
Mobile
Montgomery
Vernon

Florida

Lutz
Pensacola
Sarasota
Tampa

Georgia

Atlanta
Augusta
Brunswick
Savannah

Louisiana

New Orleans

North Carolina

Charlotte

South Carolina

Charleston
Columbia
Greenville

Tennessee

Brentwood
Nashville



Goodwyn Mills Cawood

Building
Communities



www.gmcnetwork.com