

Huntsville's Heartbeat:

Assessing and Improving the I-565/Memorial Parkway Interchange





MEET THE TEAM

Today's Presenters



Jack Kimbrough
Director, Roadway Design



Peter Schmidt
Traffic Engineer



Today's Agenda

Why is this important?

Project History

What's in the way?

The Process

What's next?

I-565 Memorial Parkway

Why is this important?



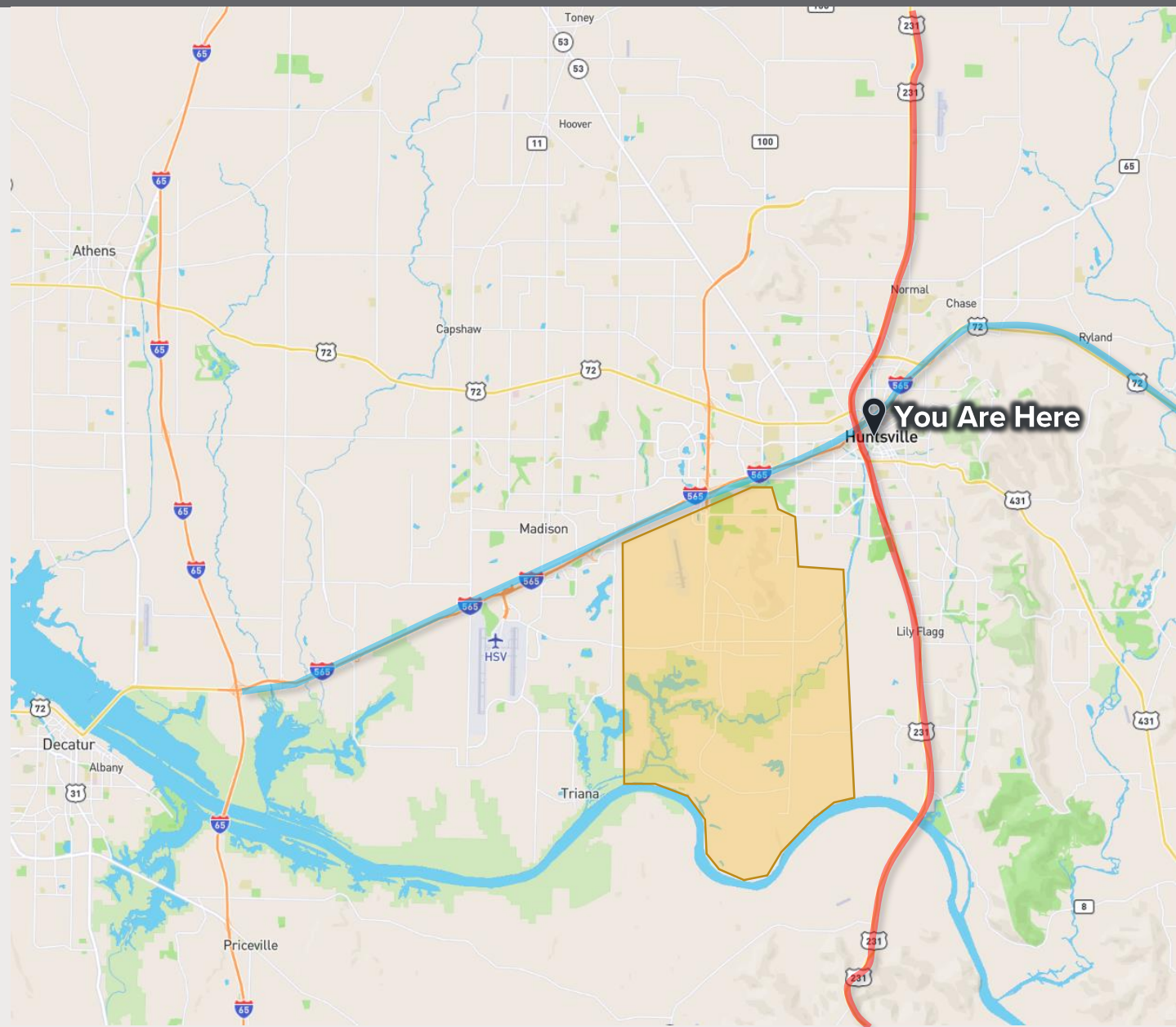
Why is this important?

Critical Link

- Primary North-South/East-West Interchange
- **SR 53, US 231, US 431, I-565, US-72**

Purpose and Need

- Congestion Reduction for Interchanging Traffic
- Improved Access to Downtown





Where are we?



Memorial Parkway

Barge Design Solutions



125,000
vehicles per day

You Are Here



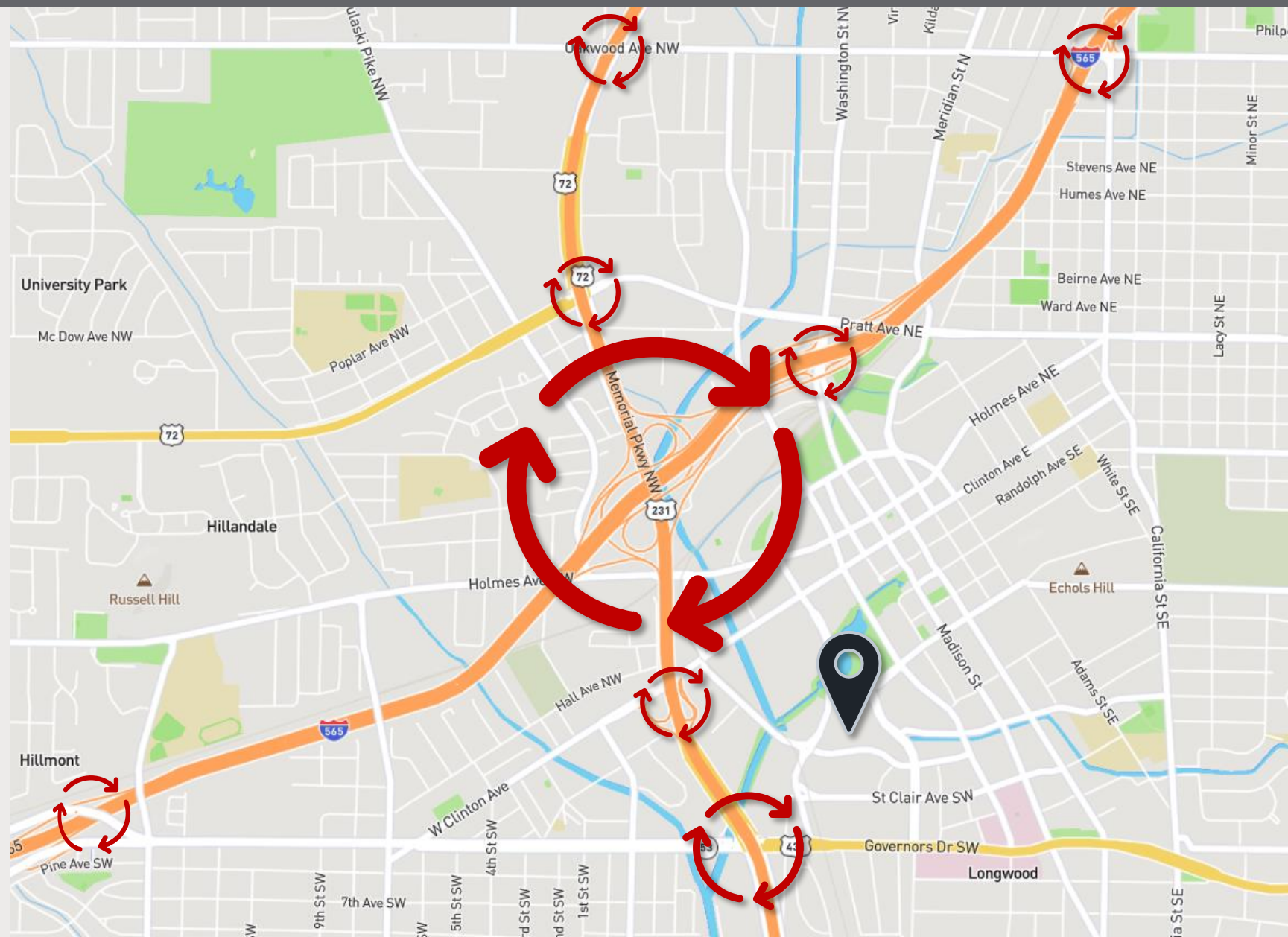
100,000
vehicles per day



How BIG is this thing?

Auxiliary Interchanges

- **Governors Drive**
- Clinton Avenue
- University Drive (US 72)
- Washington St (Downtown)
- Oakwood Avenue (twice)
- Jordan Lane (SR 53)



Addressing the City's Long-Range Plan

Project History



How did we get here?

Interchange History

- Design Mid-1980's
- Mainline 565 Bridges Late 80's - 1991
- Parkway Bridges 1991
- Opened 1992
- Design Year +/- 2005 (Assuming 20 yr. Horizon)
- FY 2016 City CIP (2025)
- Assessment Contract 2018
- TRiP 2045 #1 Visionary Project

County Subdivisions

Madison County—Con.

Hazel Green division -----
Hazel Green (CDP) -----
Huntsville division -----
Huntsville city (pt.)⁴³ -----

1980
4 666
1 503
158 038
142 227

VISIONARY PROJECT RANKINGS: EXPRESSWAYS				
Based on 2045 FC Volume/Capacity Ratios				
RANK	PROJECT	FROM	TO	DESCRIPTION
1	US 231/431 Memorial Pkwy.	@ I 565 Interchange		Interchange Modification
2	AL 255	@ I 565 Interchange		Interchange Modification
3	AL 255	@ US 72 Interchange		Interchange Modification
4	AL 255	US 72	AL 53	Widening to 6-lanes
N.R.	Memphis to Huntsville to Atlanta Hwy.	I 65	I 565	New Road
N.R.	Memphis to Huntsville to Atlanta Hwy.	Arsenal East Connector	Marshall County	New Road

Understanding the Site

What's in the way?



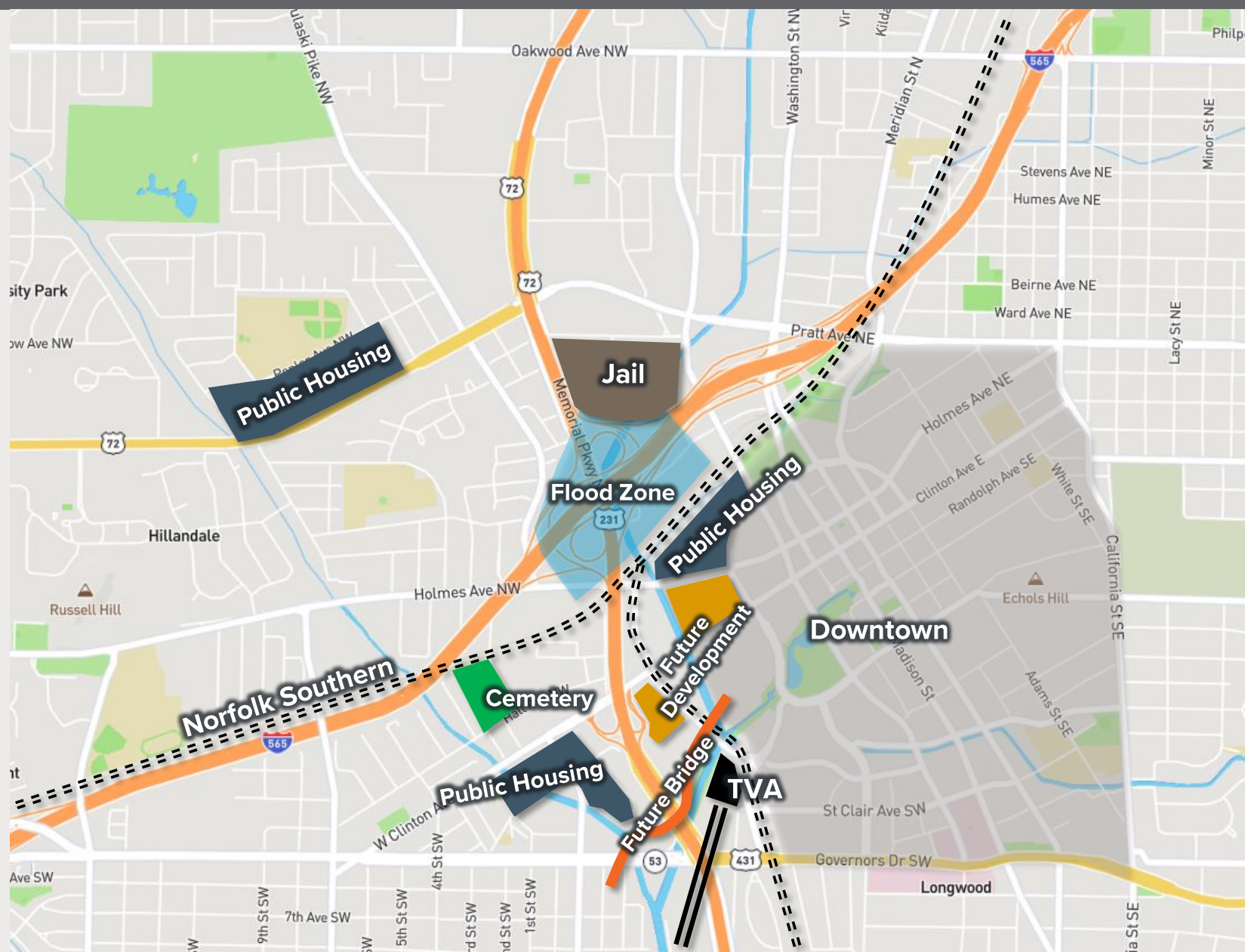
What's in the way?

Existing Restrictions

- Municipal Jail
- Norfolk Southern Main Line Rail
- Flood Zone
- Glenwood Cemetery
- Public Housing

Future Restrictions

- Constellation Development
- Coca-Cola Site
- Signature Pedestrian Bridge



The Interchanges Within the Interchange

The Problems



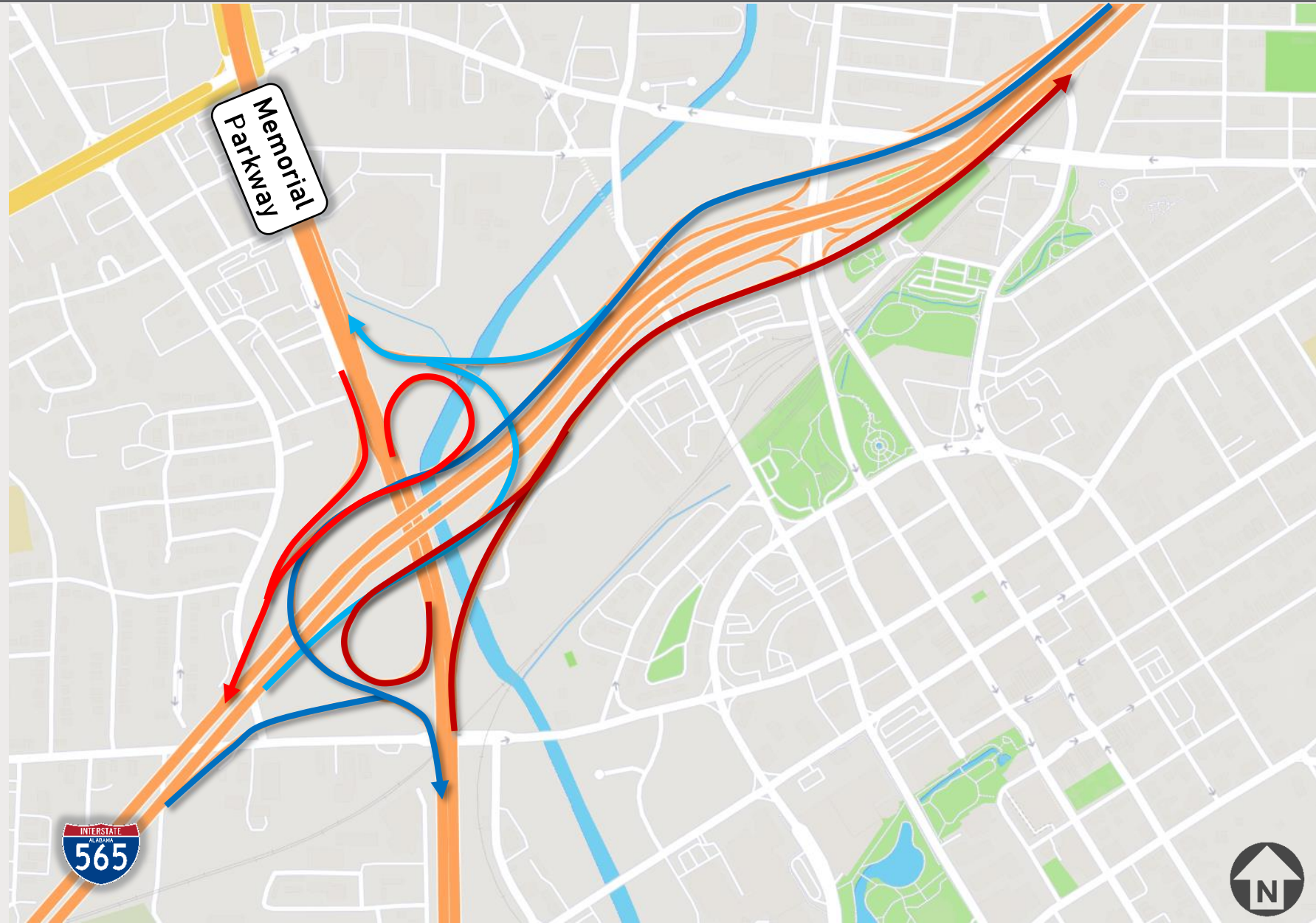
Where do we START?

Interconnected Design

565 to Parkway

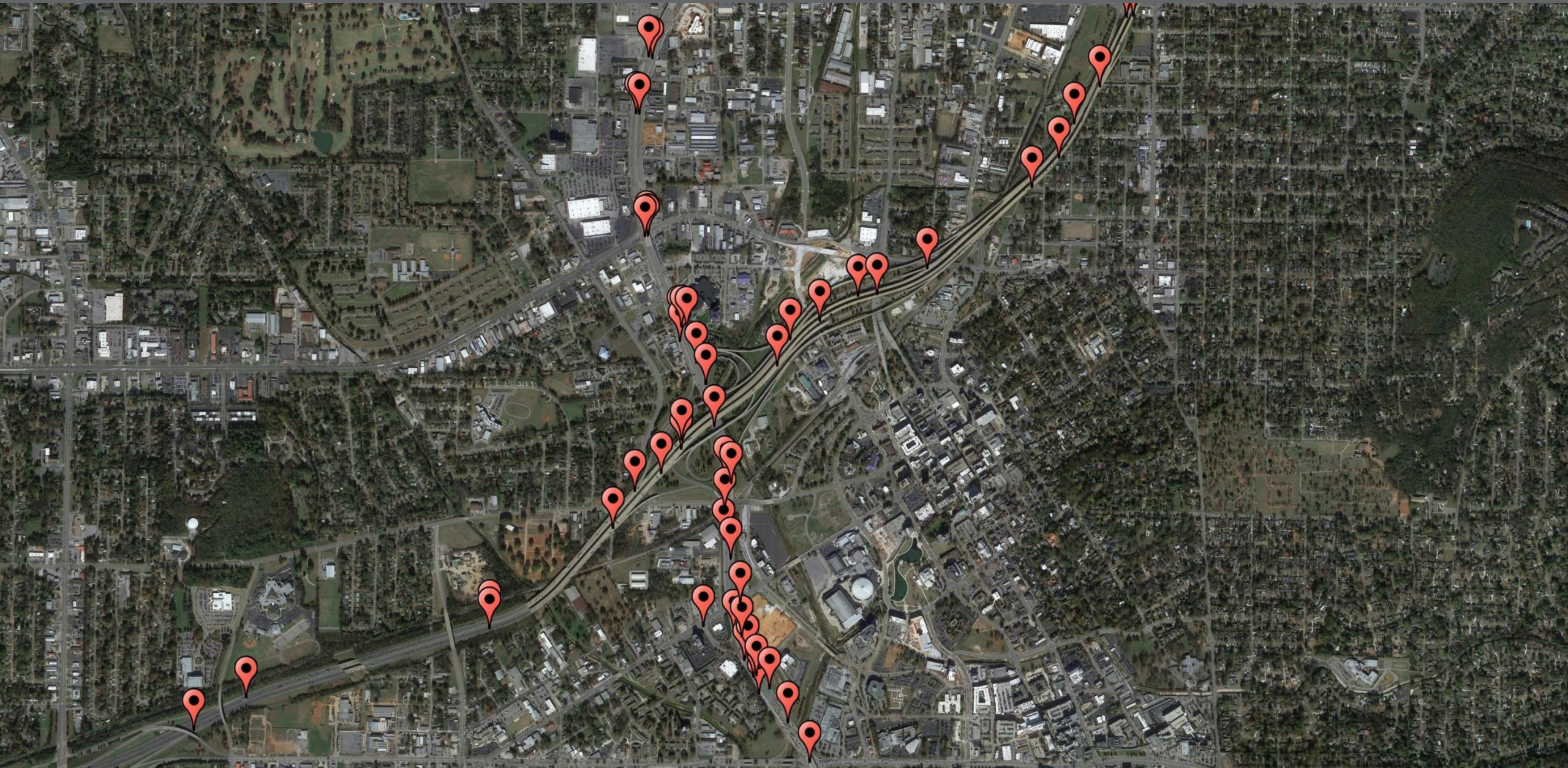


Parkway to 565



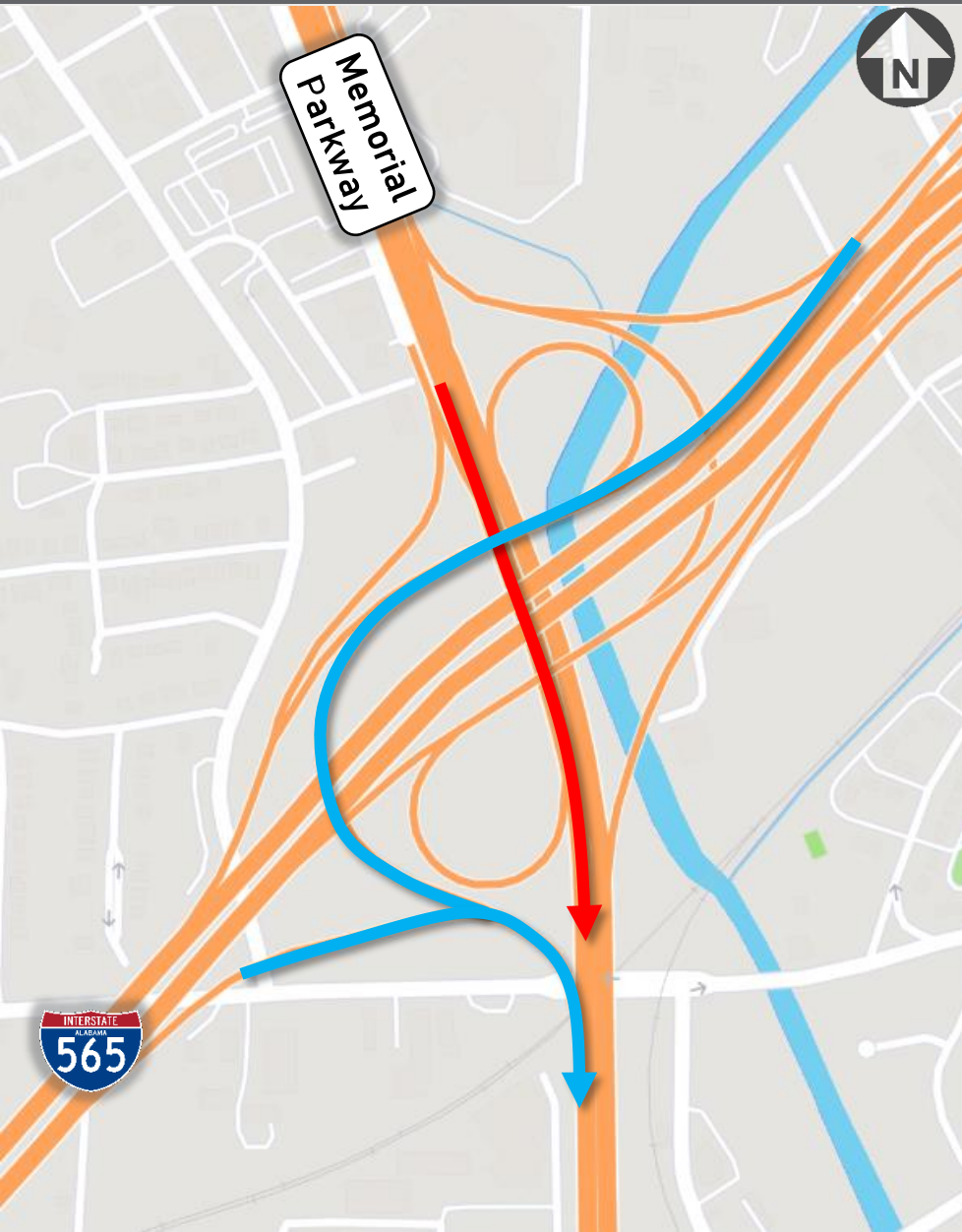


Count Locations



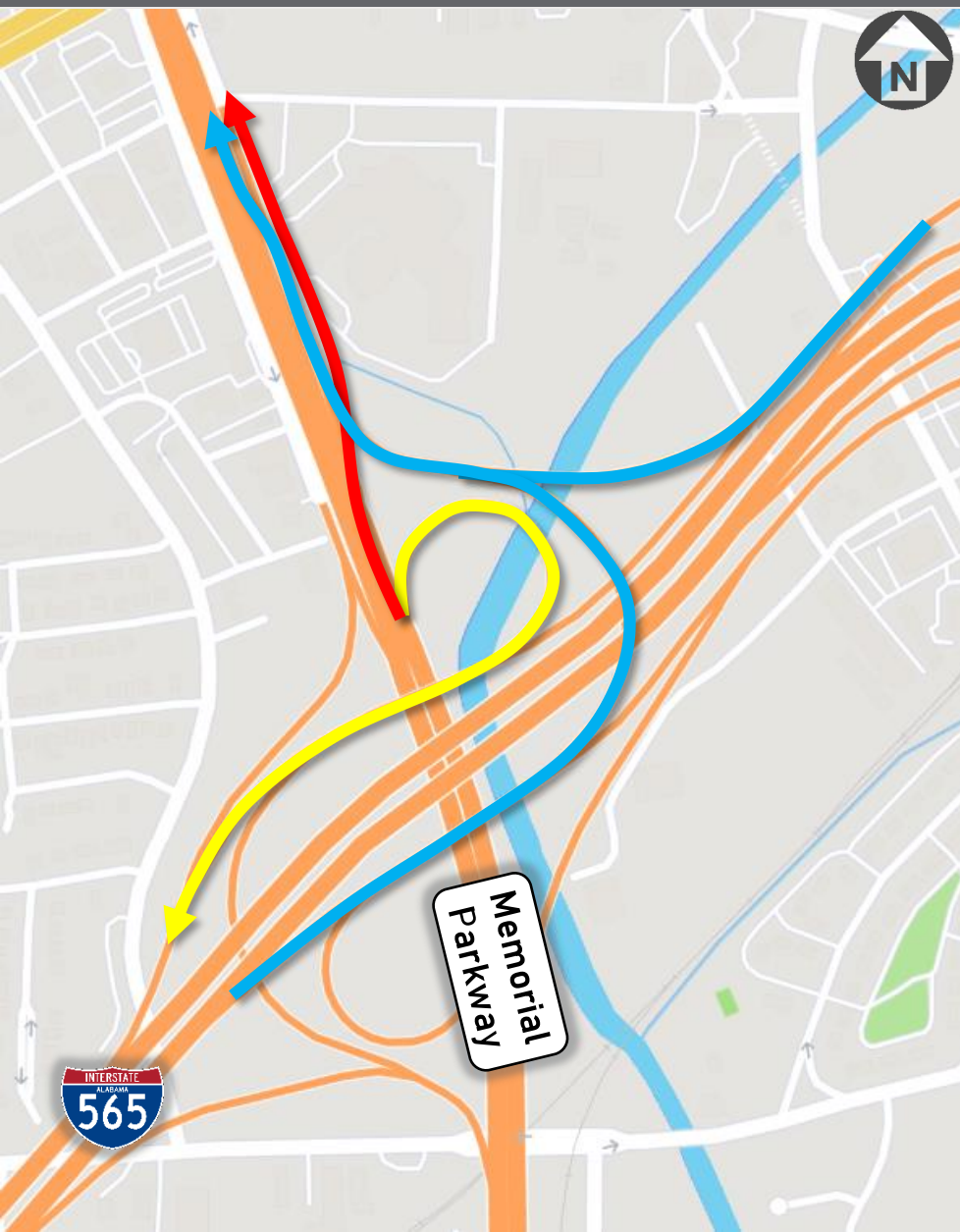


I-565 to Parkway Southbound



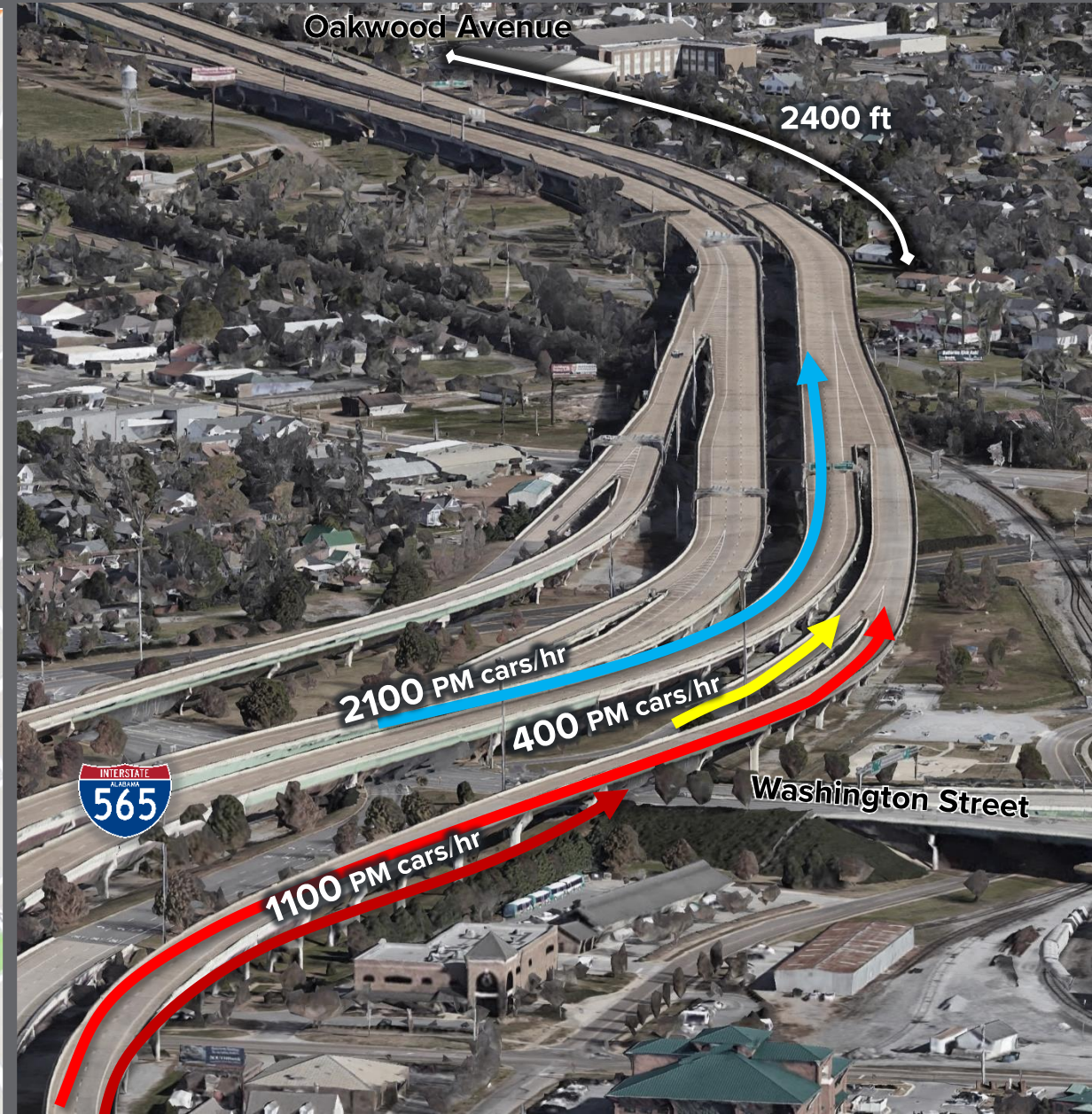
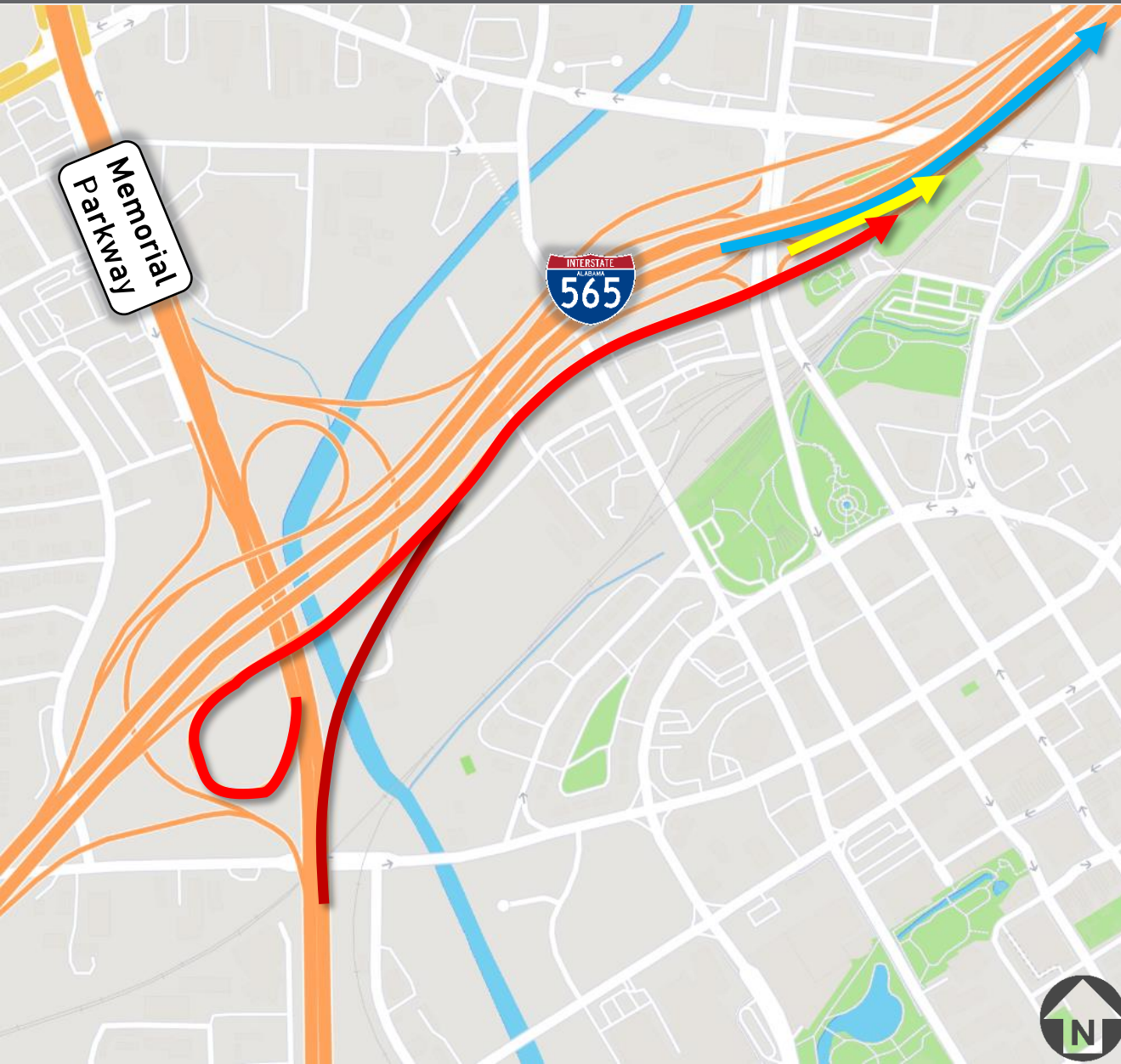


I-565 to Parkway Northbound



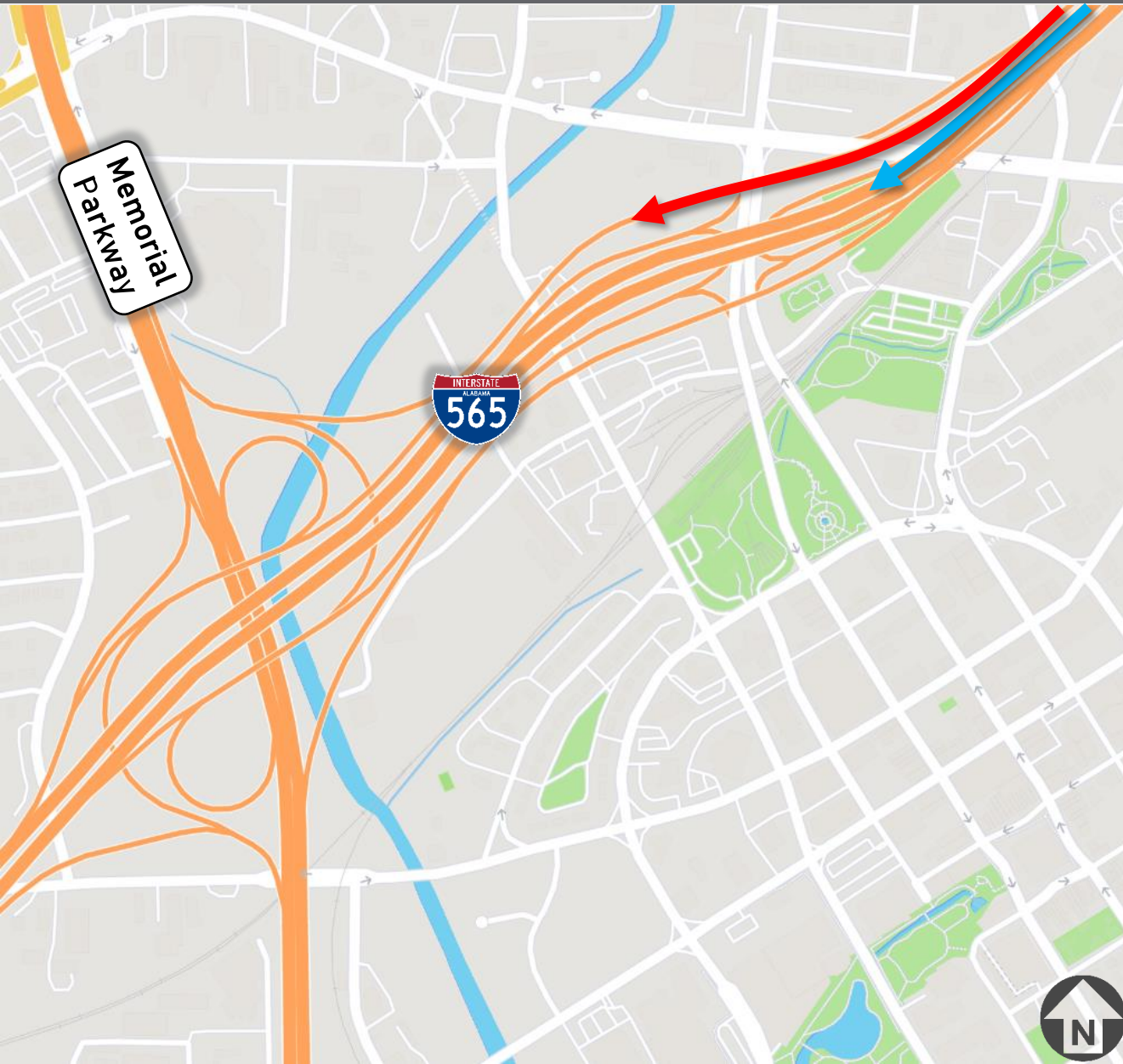


Parkway to I-565 Eastbound



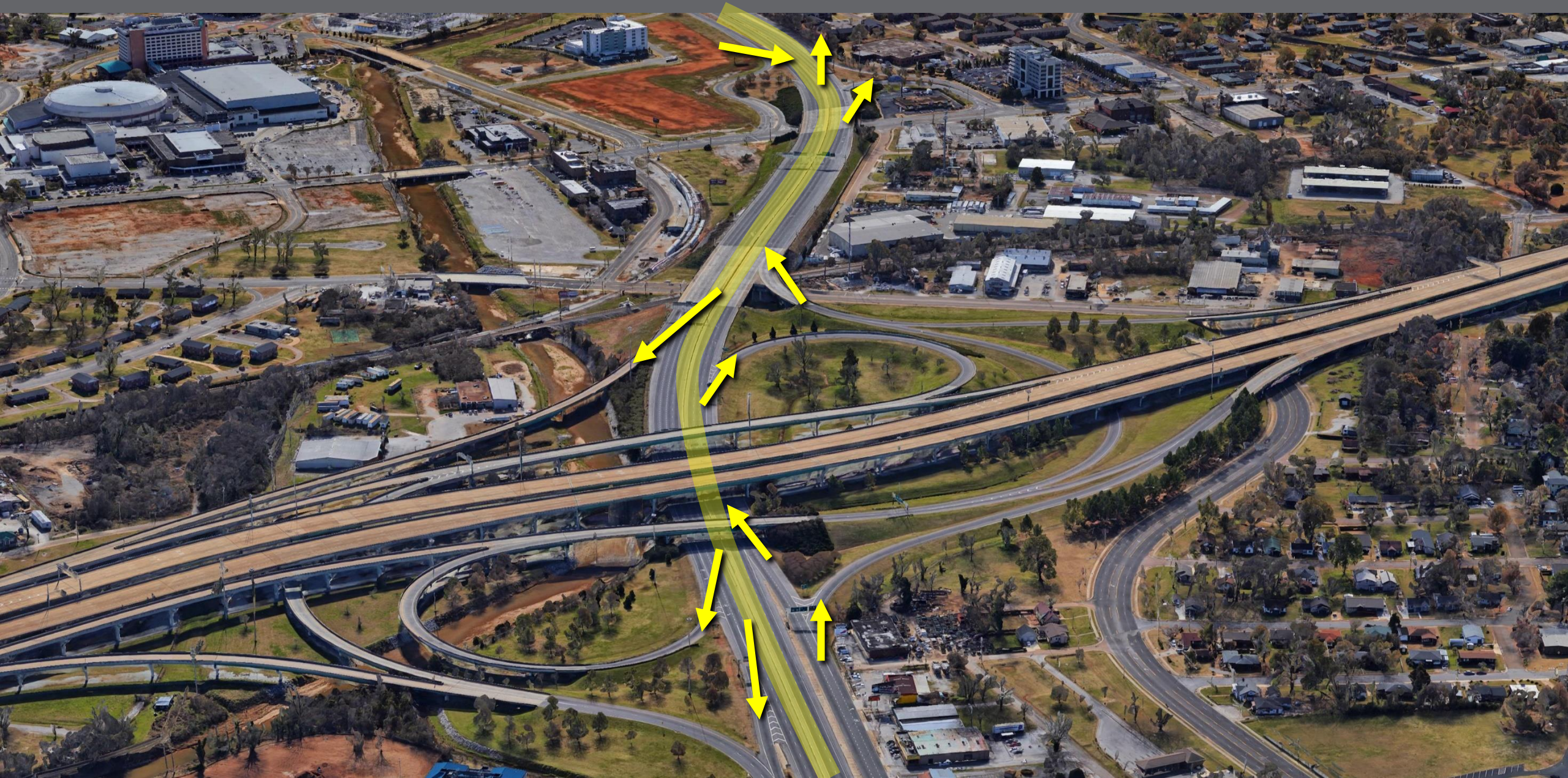


I-565 Westbound to Parkway





Ramp Density



The Interchanges Within the Interchange

The Process

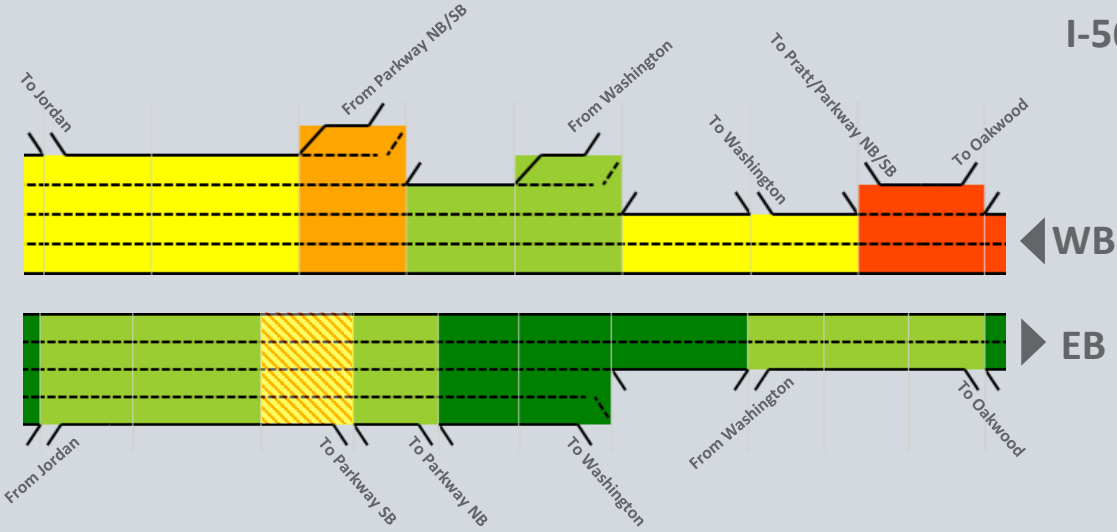


2018

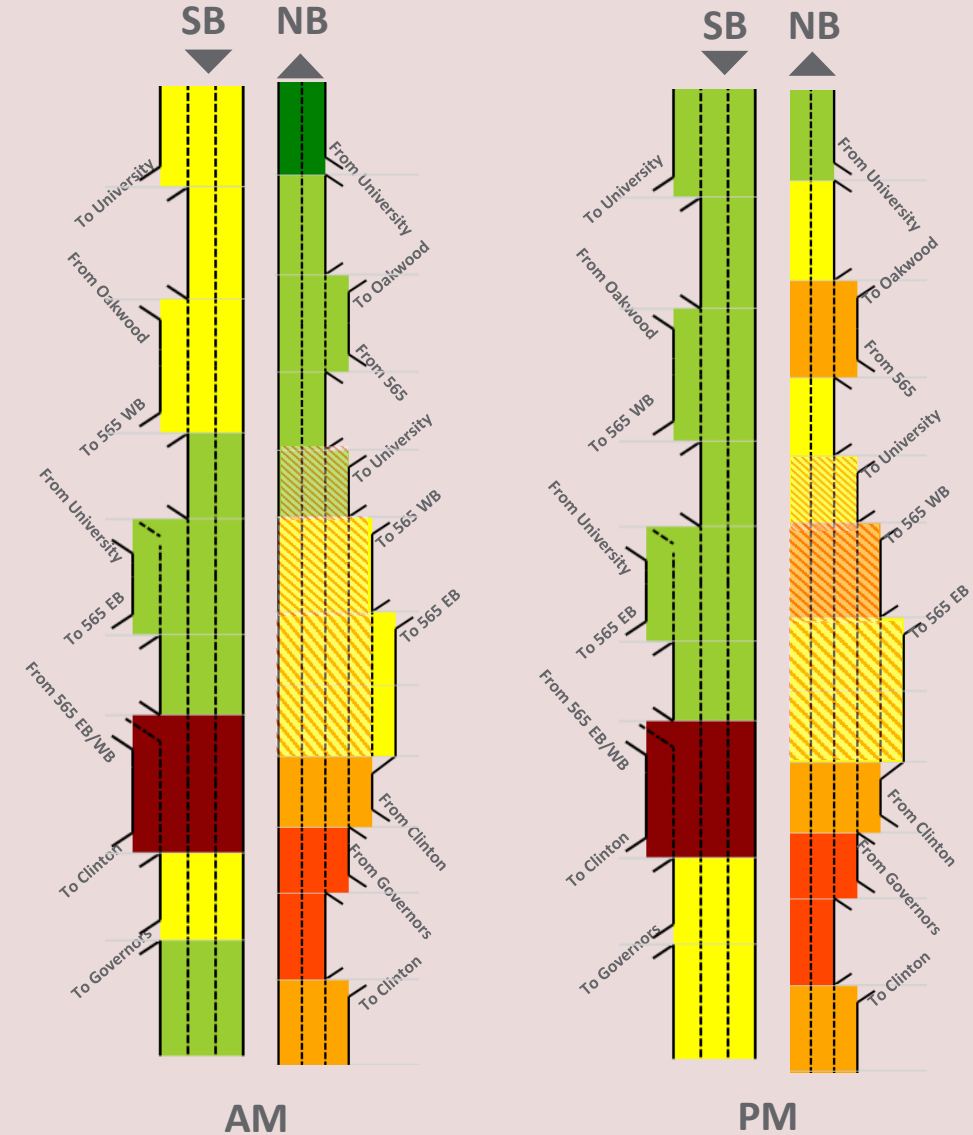
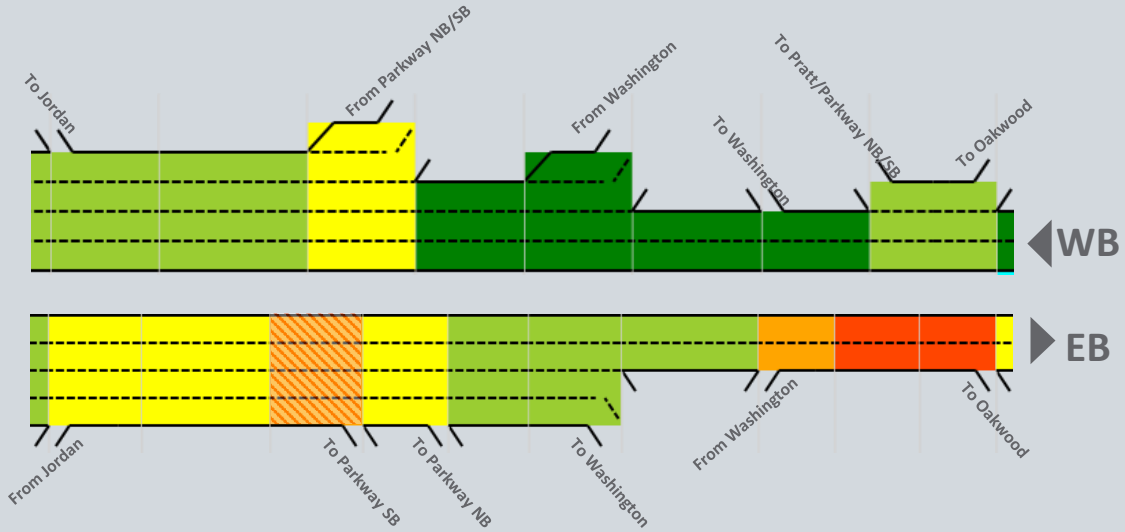
I-565 MEMORIAL PARKWAY

LOS	
A	
B	
C	
D	
E	
F	

AM

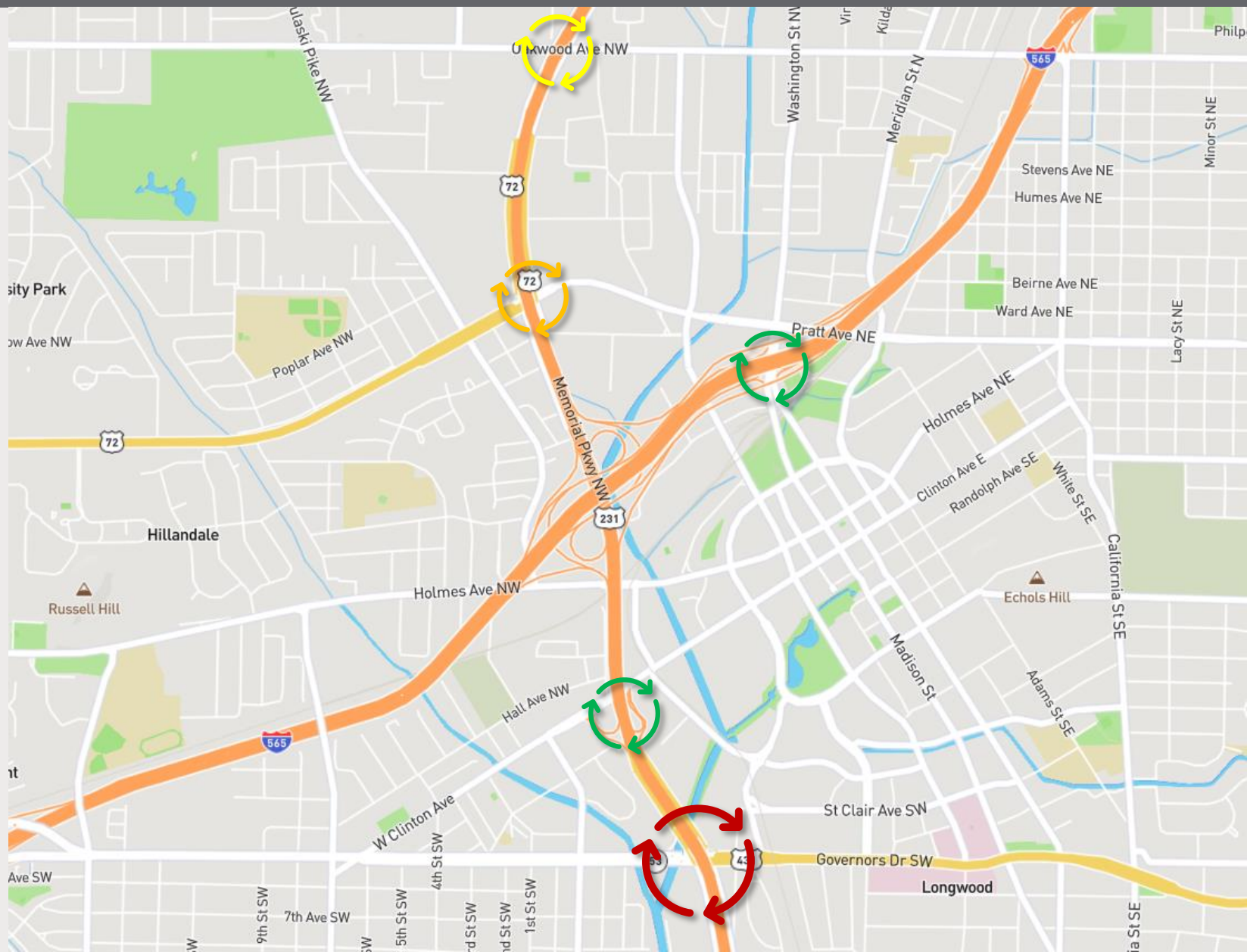


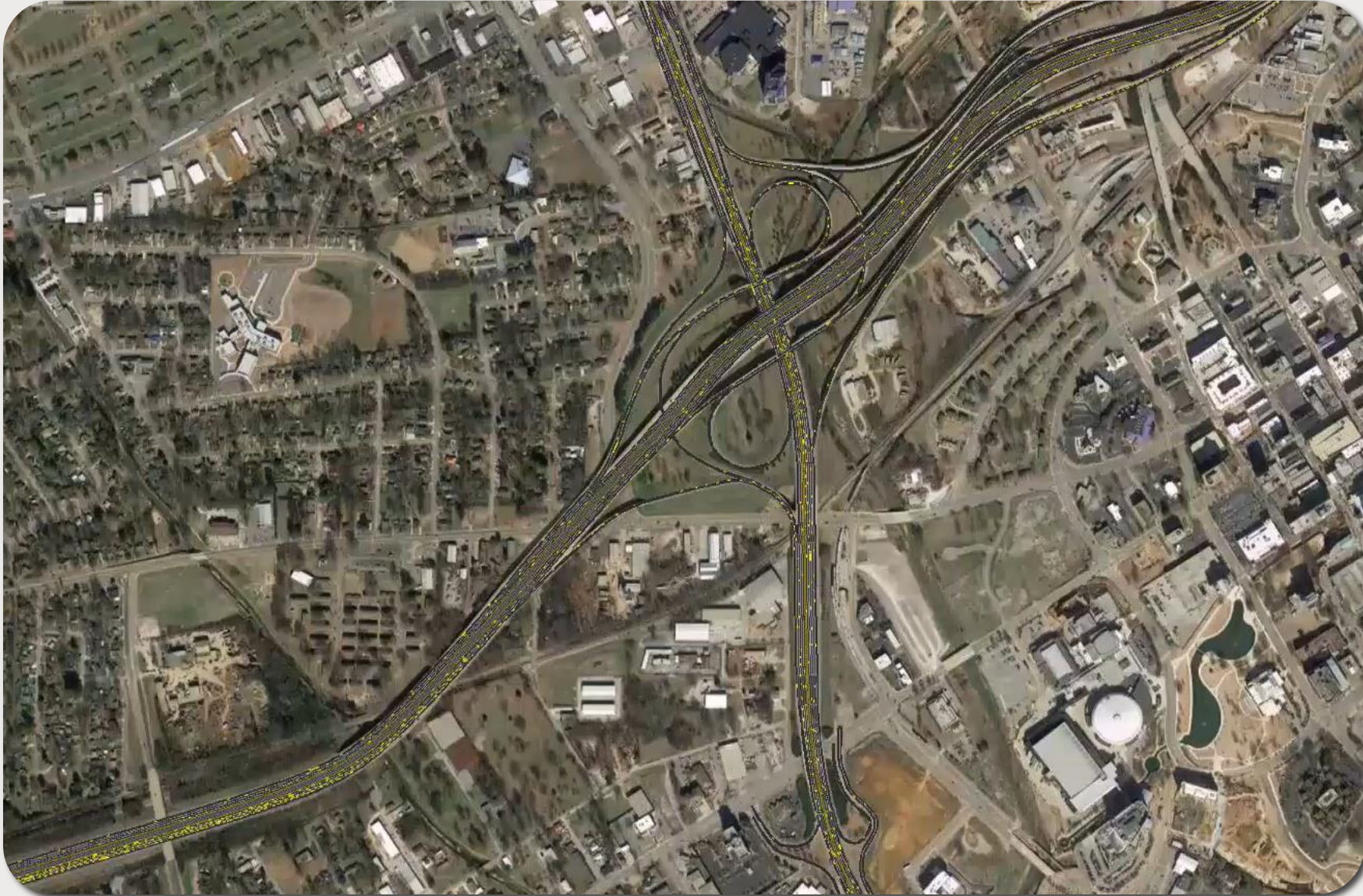
PM



Auxiliary Interchanges

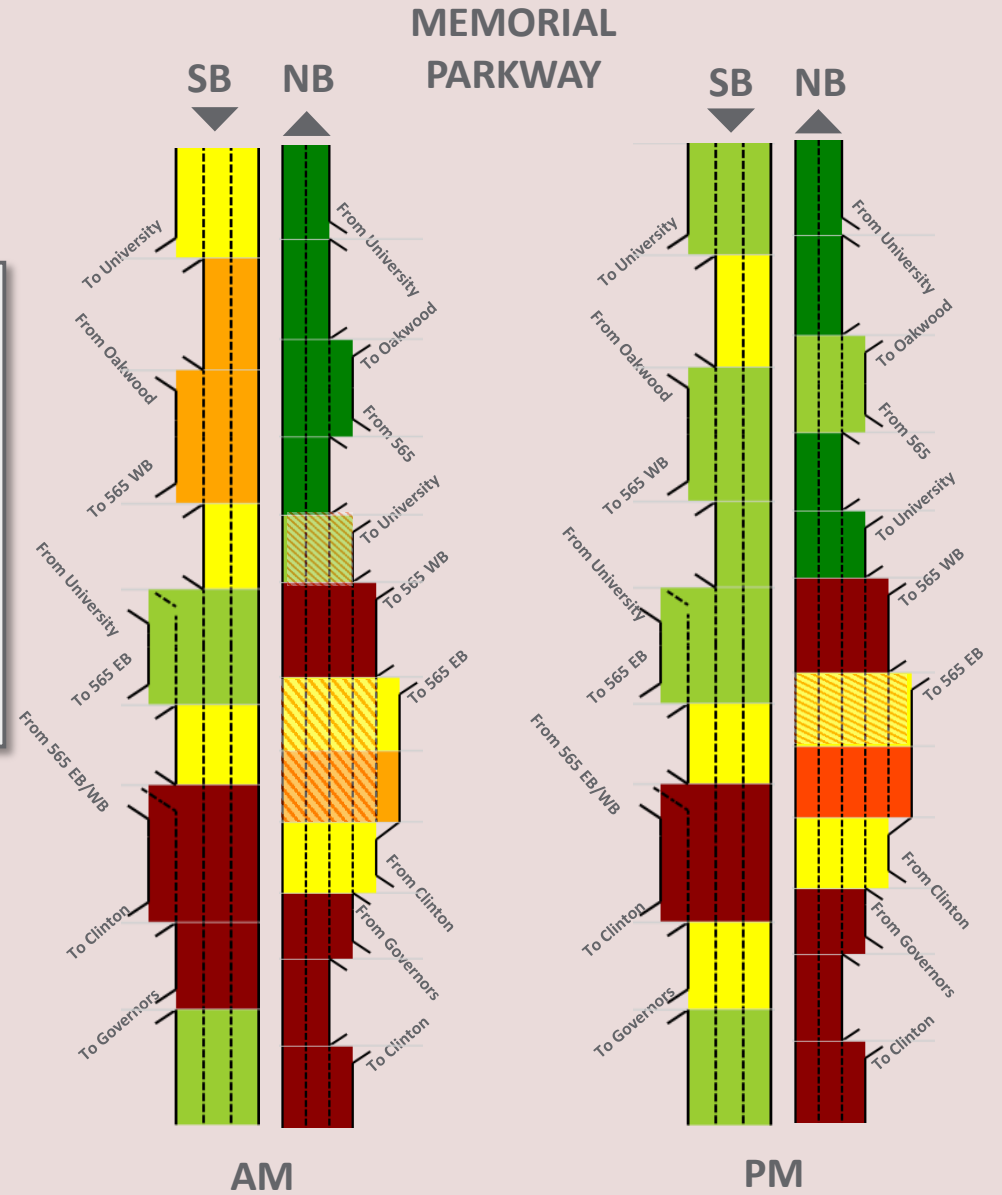
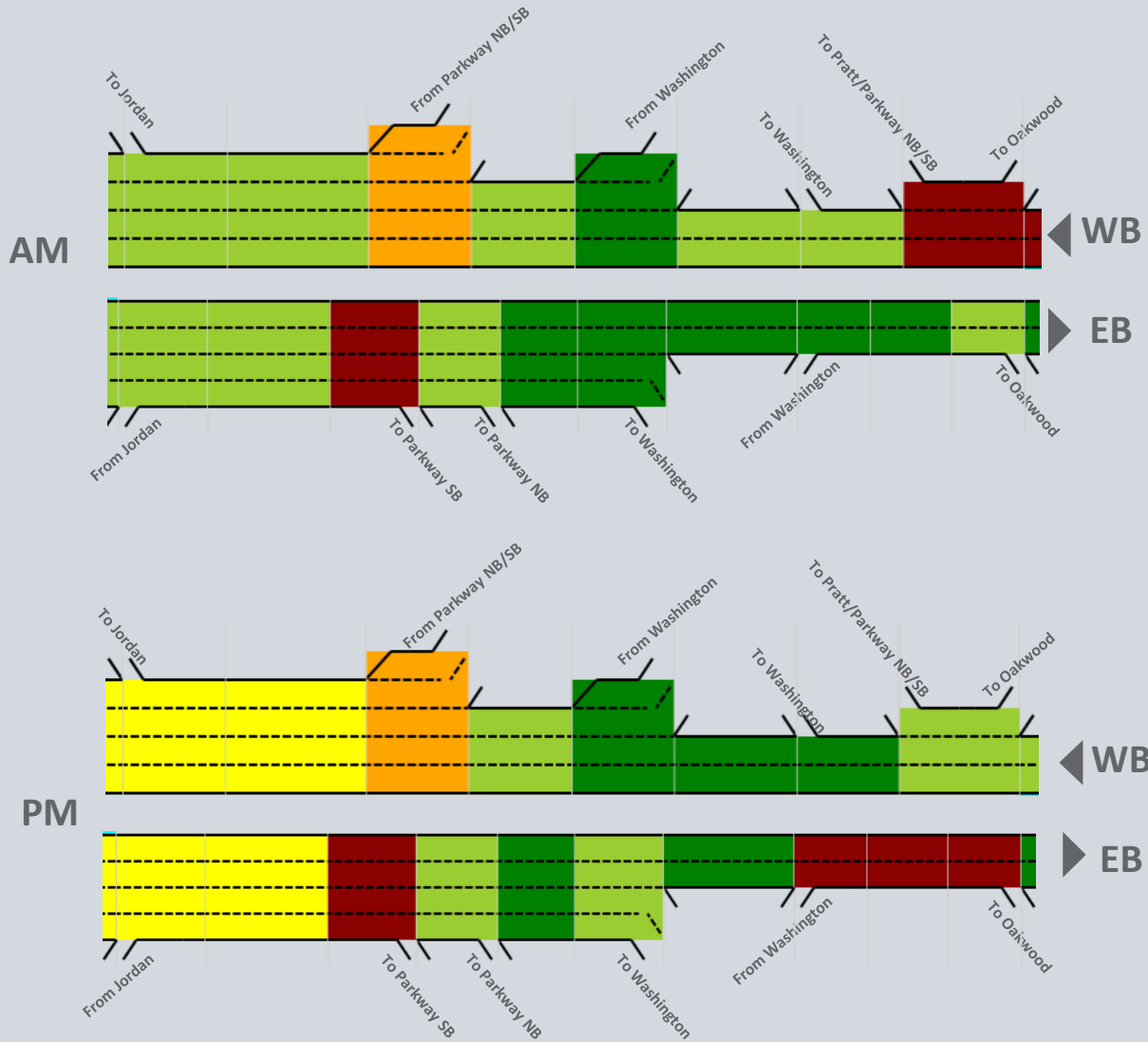
- **Governors Drive - LOS F**
- Clinton Avenue – LOS B
- University Drive – LOS D
- Washington Street – LOS A
- Oakwood Avenue – LOS C







2045

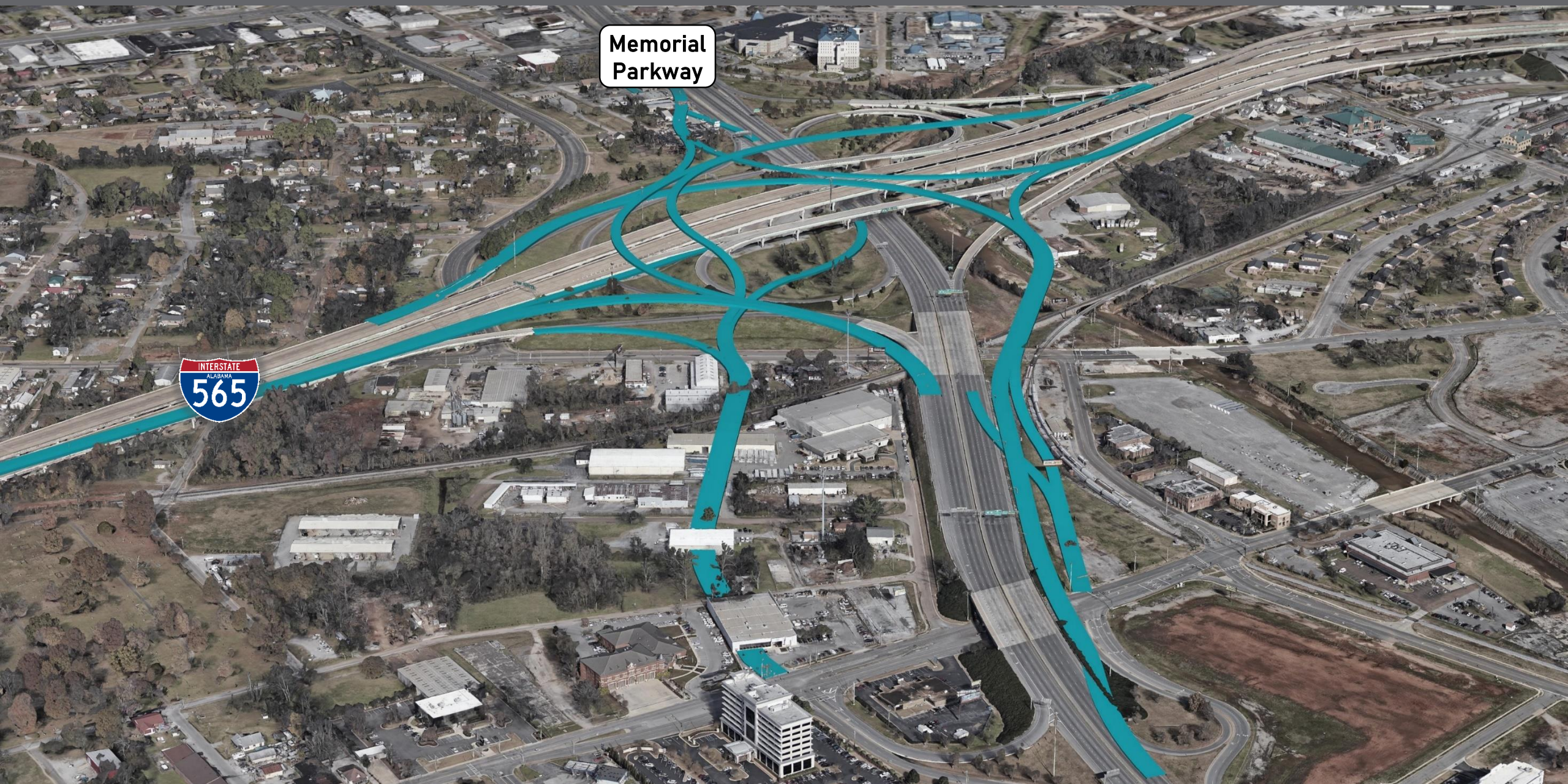


Looking Ahead to 2045 and Beyond

What's next?

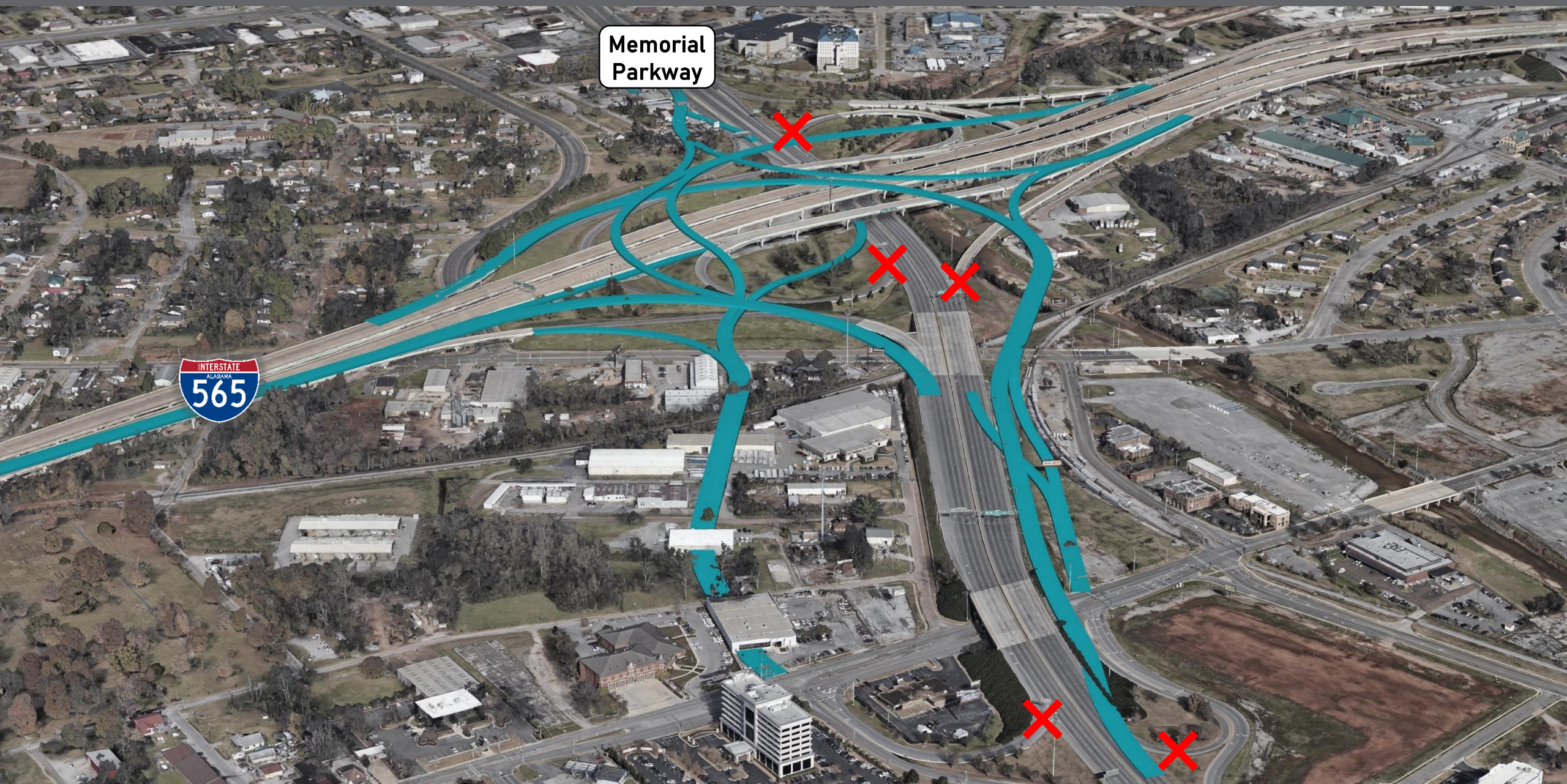


Memorial
Parkway



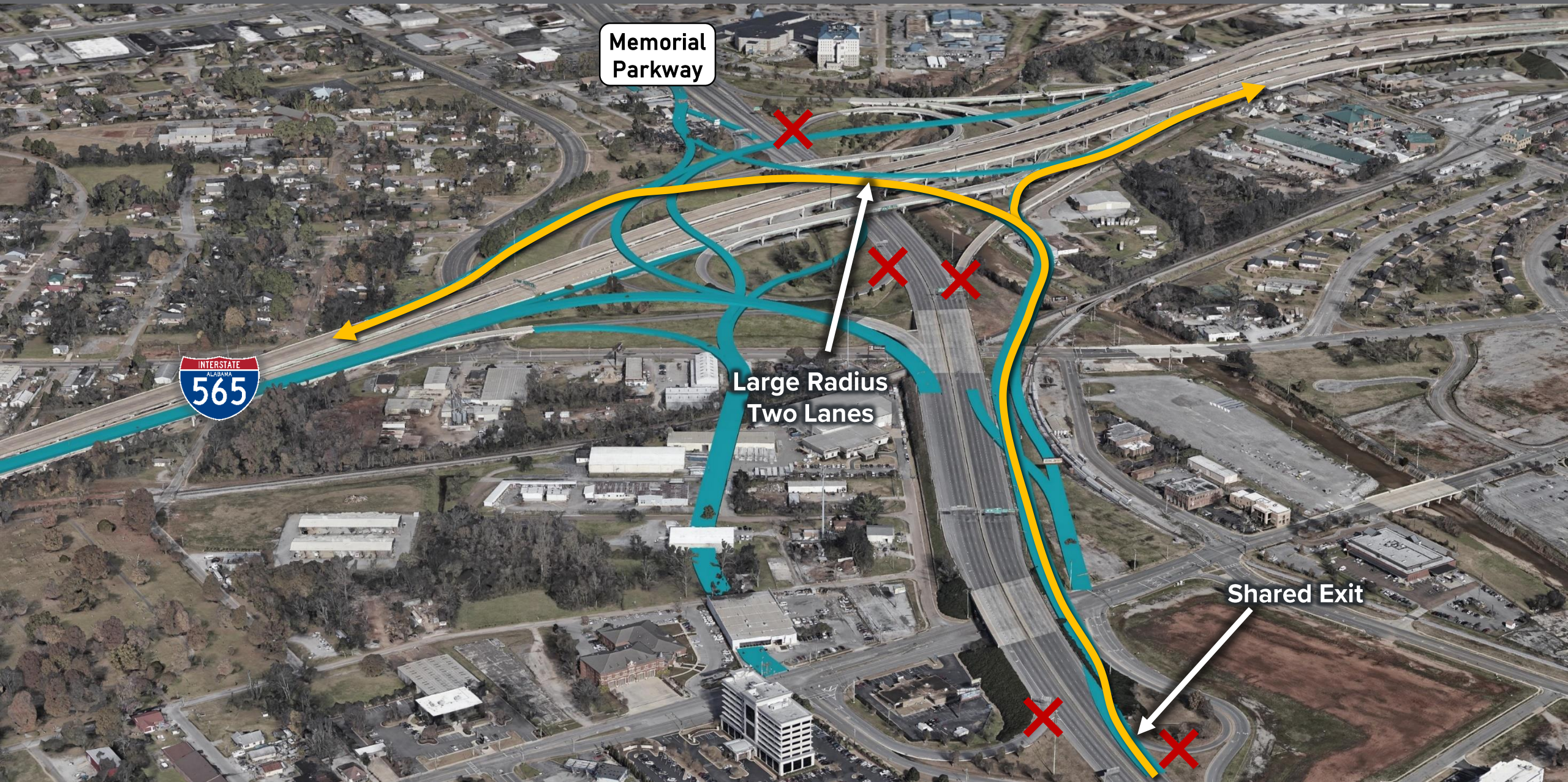


More Shared Ramps



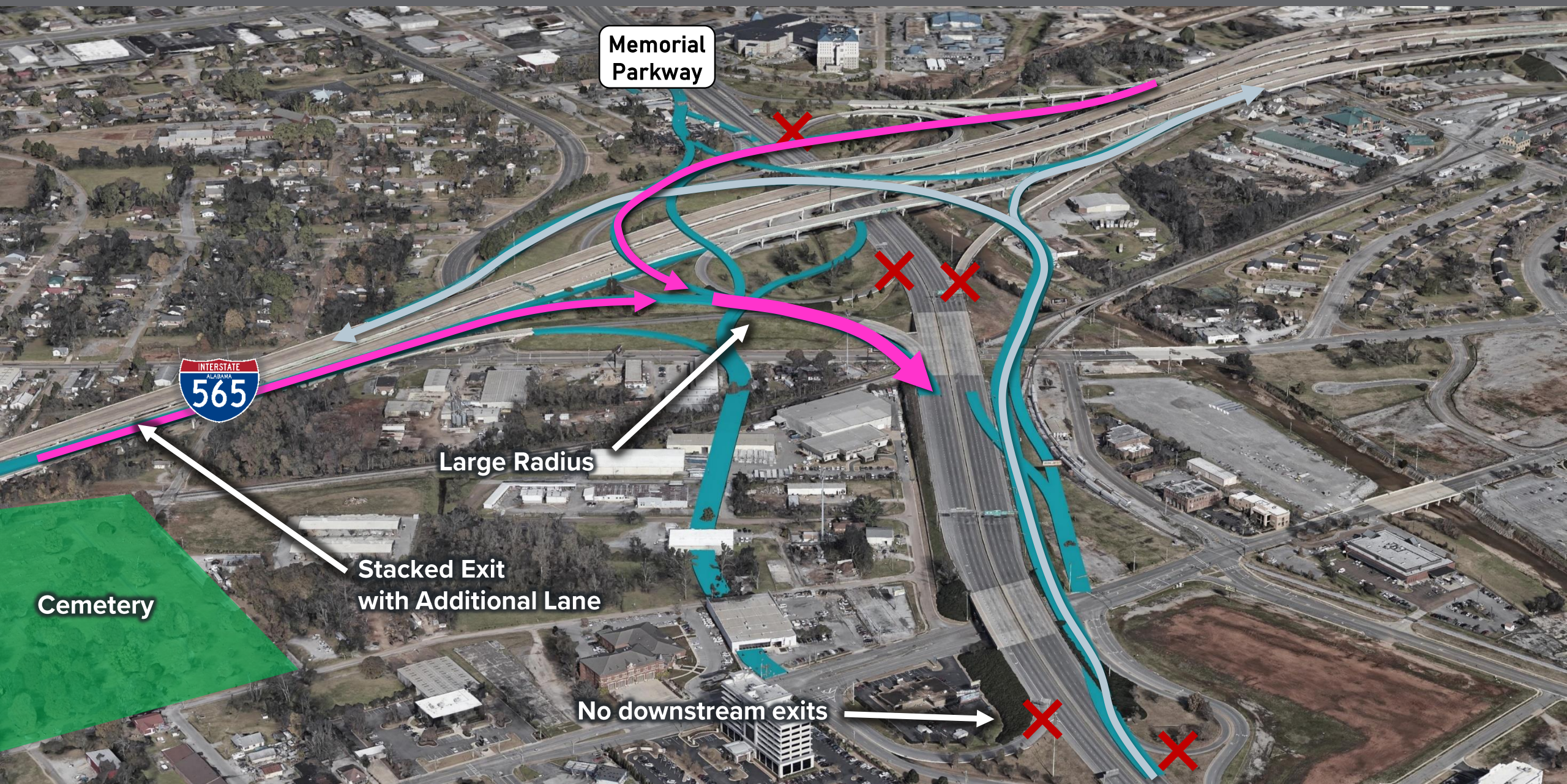


Northbound Parkway to I-565





I-565 to Parkway Southbound



Memorial
Parkway



Large Radius

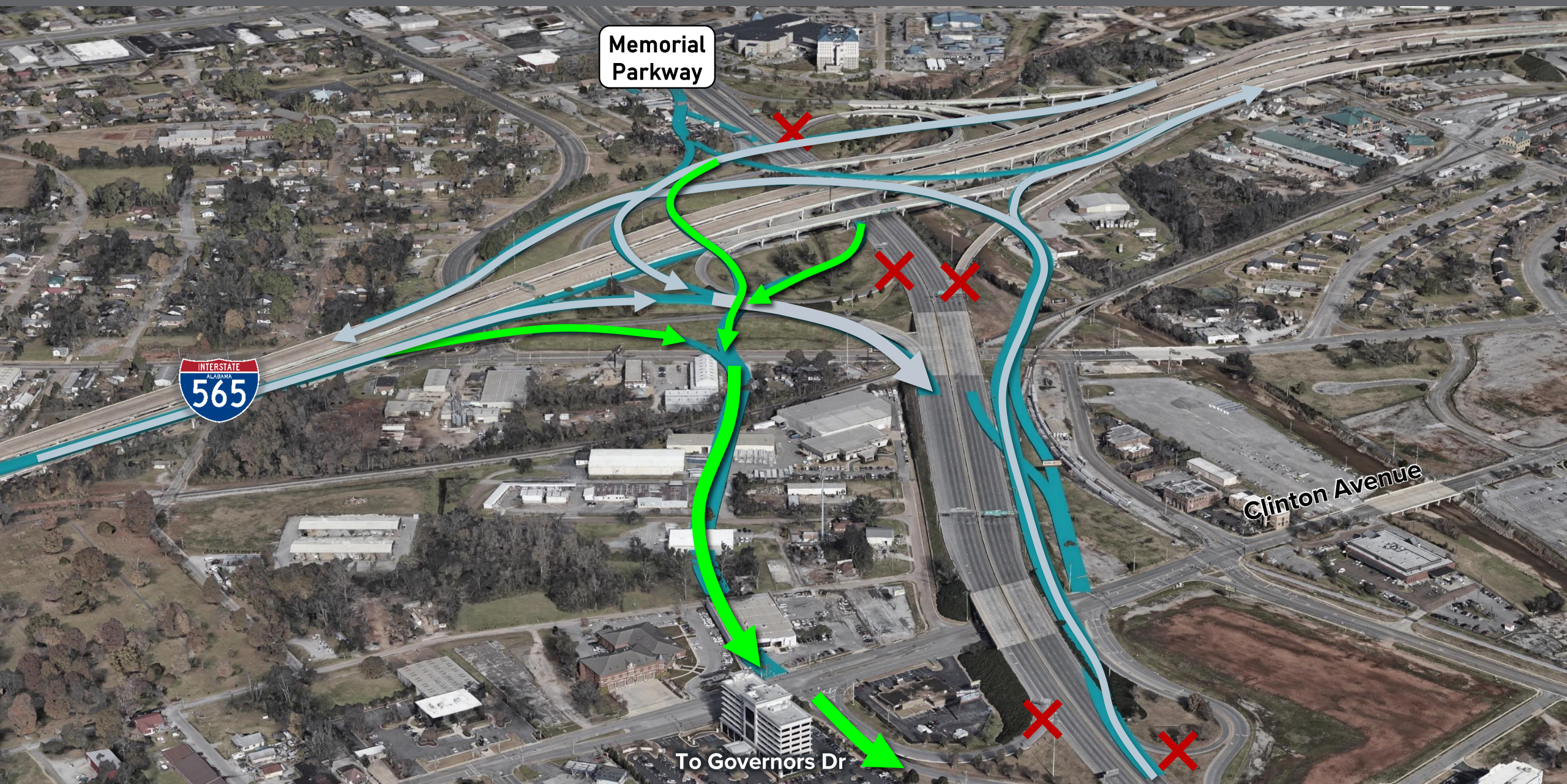
Stacked Exit
with Additional Lane

Cemetery

No downstream exits

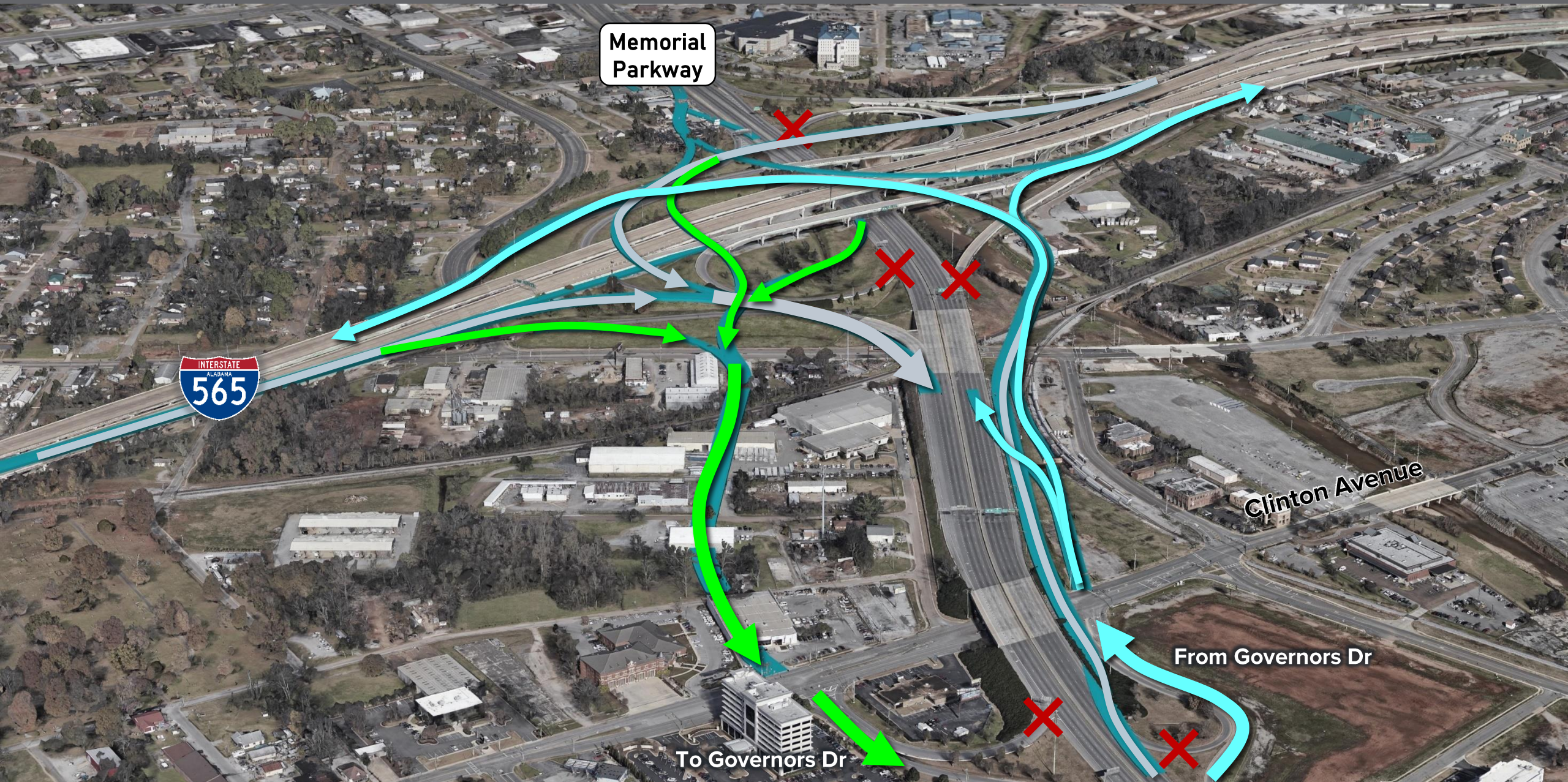


I-565 to Clinton/Governors



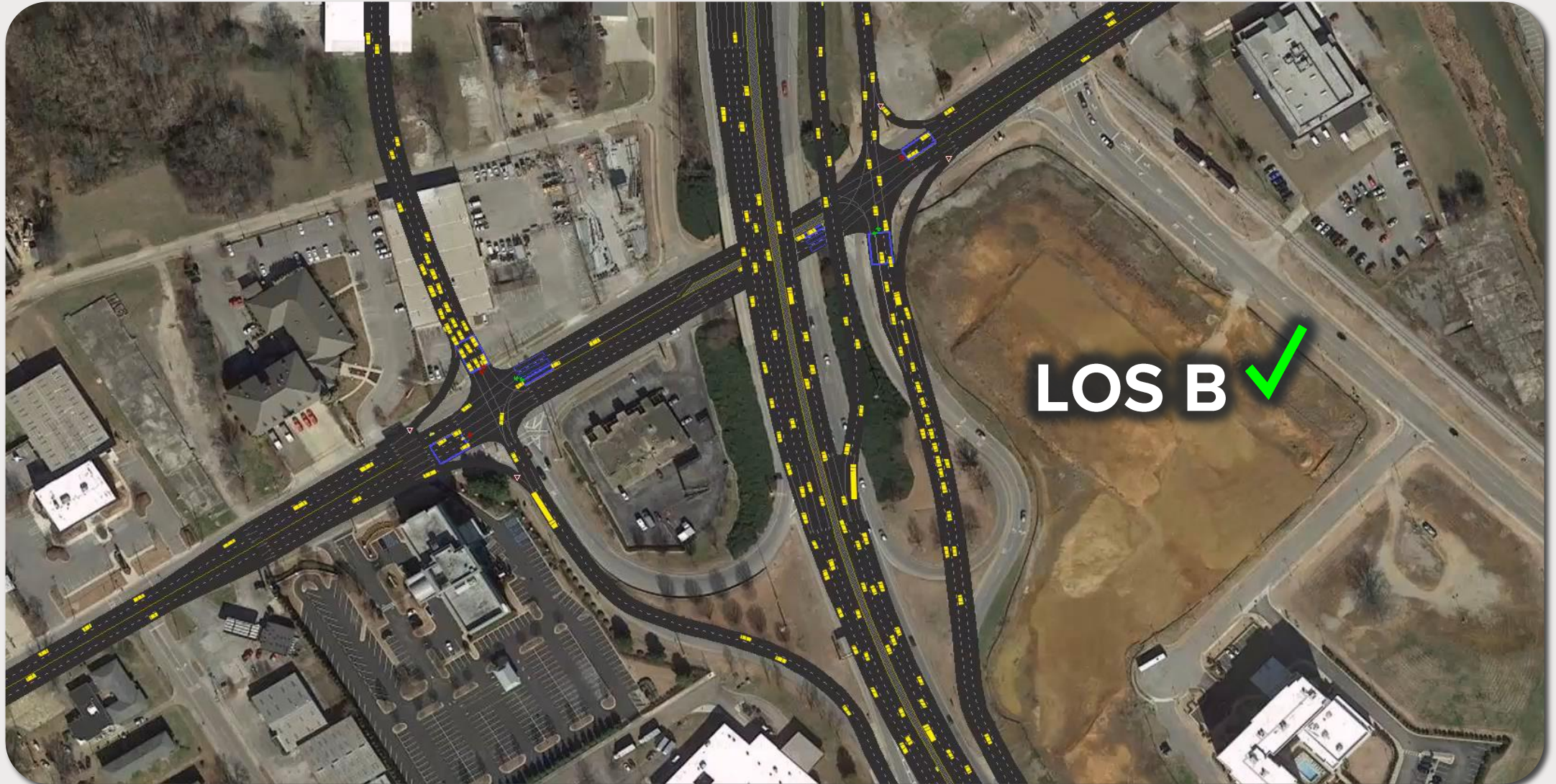


Governors/Clinton to I-565





Governors/Clinton and I-565





University Drive



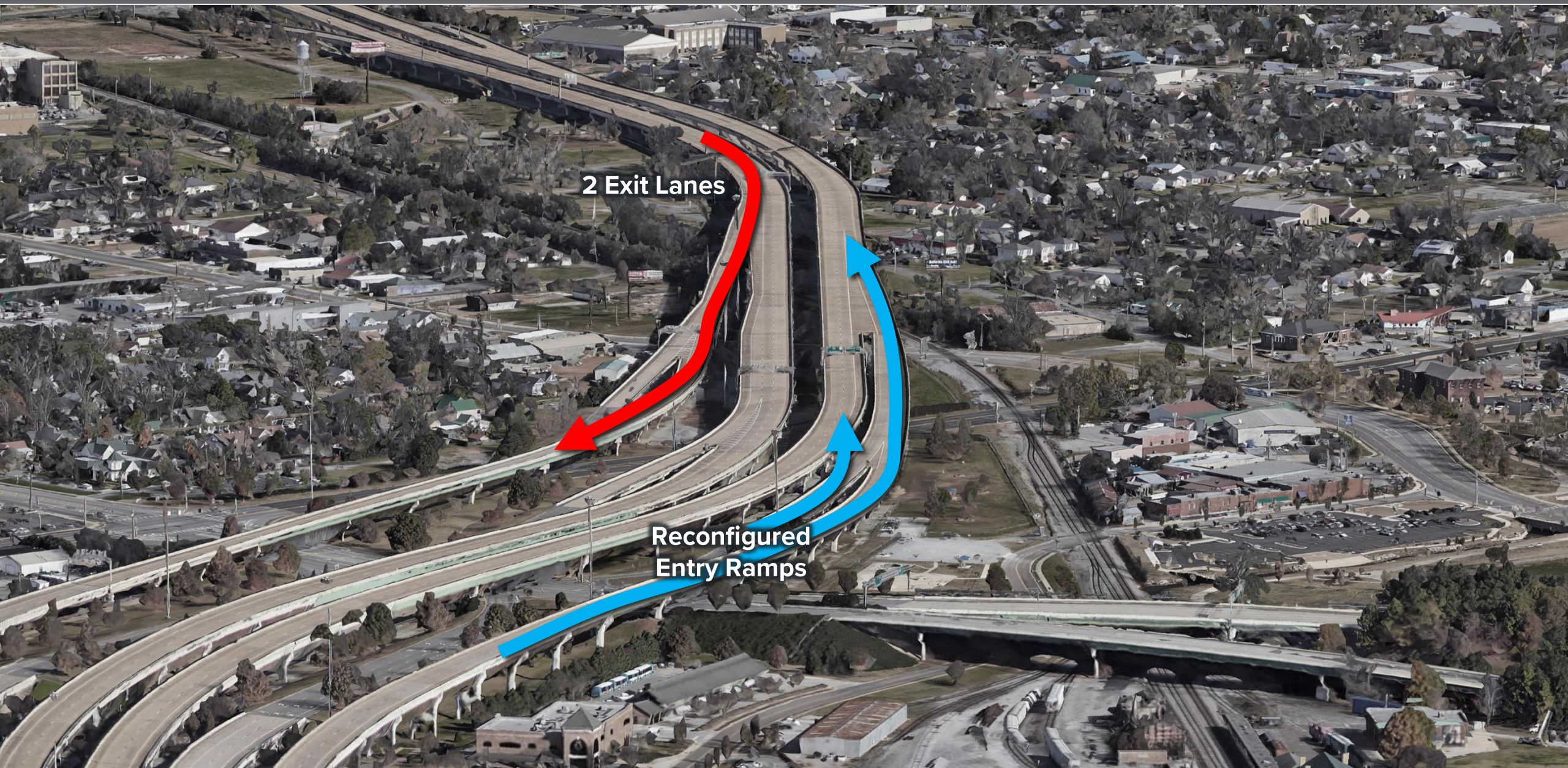
To University
Drive

To Memorial
Parkway





I-565 East to/from Parkway

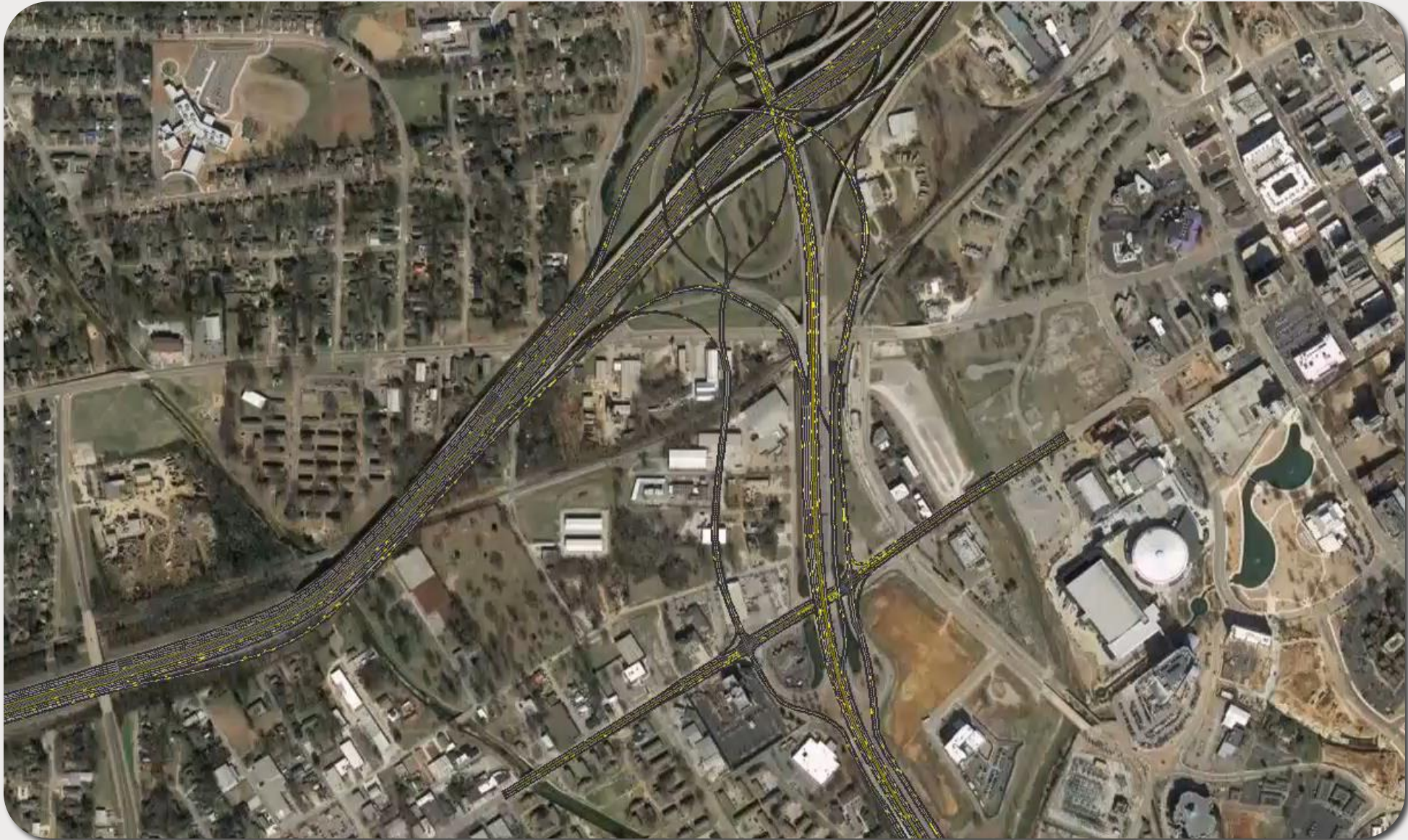


2 Exit Lanes

Reconfigured
Entry Ramps



Governors/Clinton and I-565





Governors Drive Interchange



Clinton Avenue

Memorial
Parkway

Governors Drive

You Are Here





Next Steps...

Conclusion

Questions?

Thank you.

