

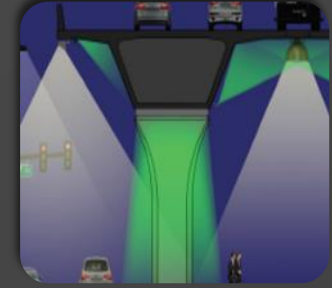
Birmingham C.B.D. Project

Presented By:

Adam Patterson

Project Manager  
Volkert

[adam.patterson@volkert.com](mailto:adam.patterson@volkert.com)



CBD  
Overview

Phase II

Phase III

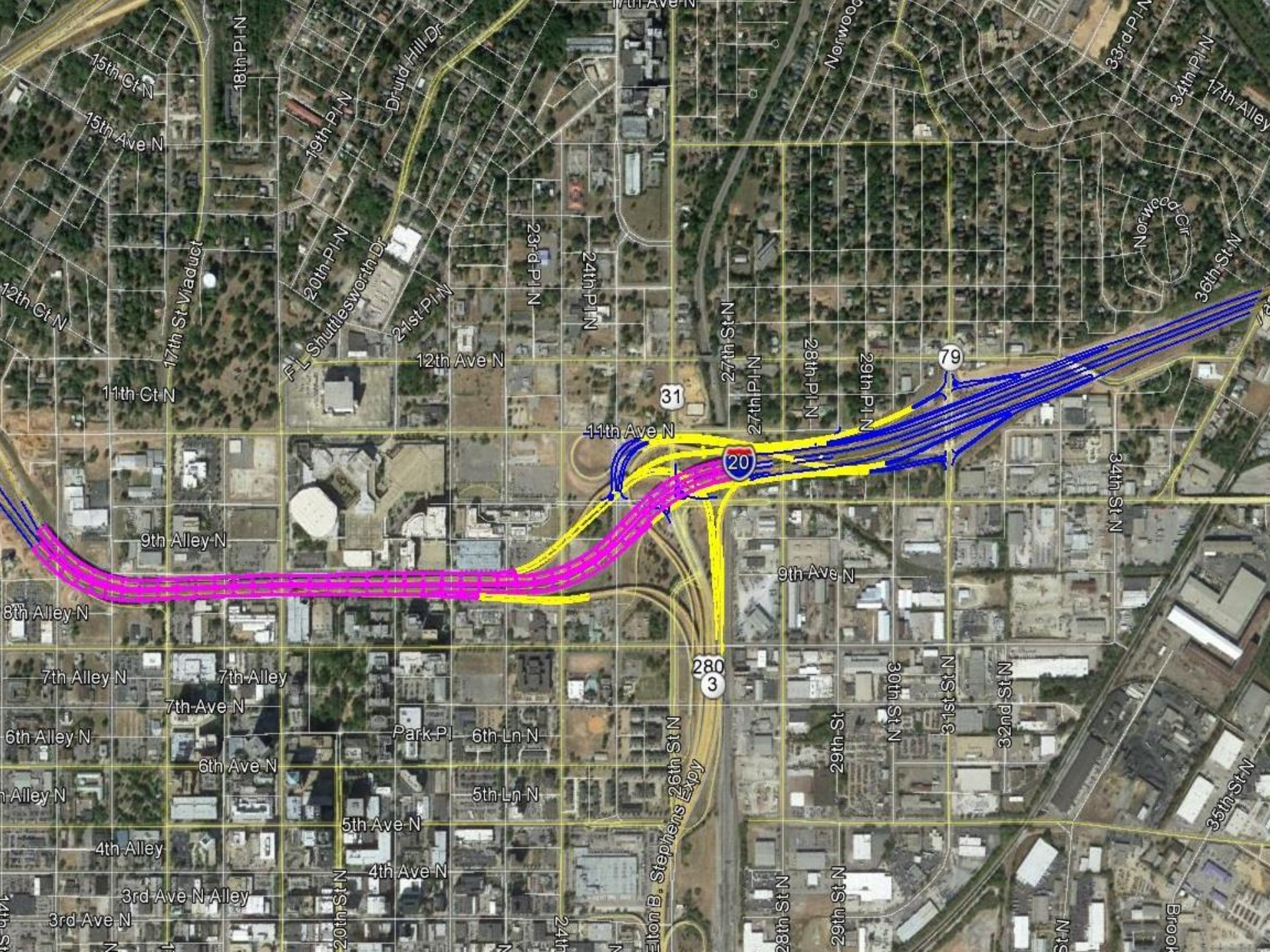
Segmental  
Bridges

Lighting





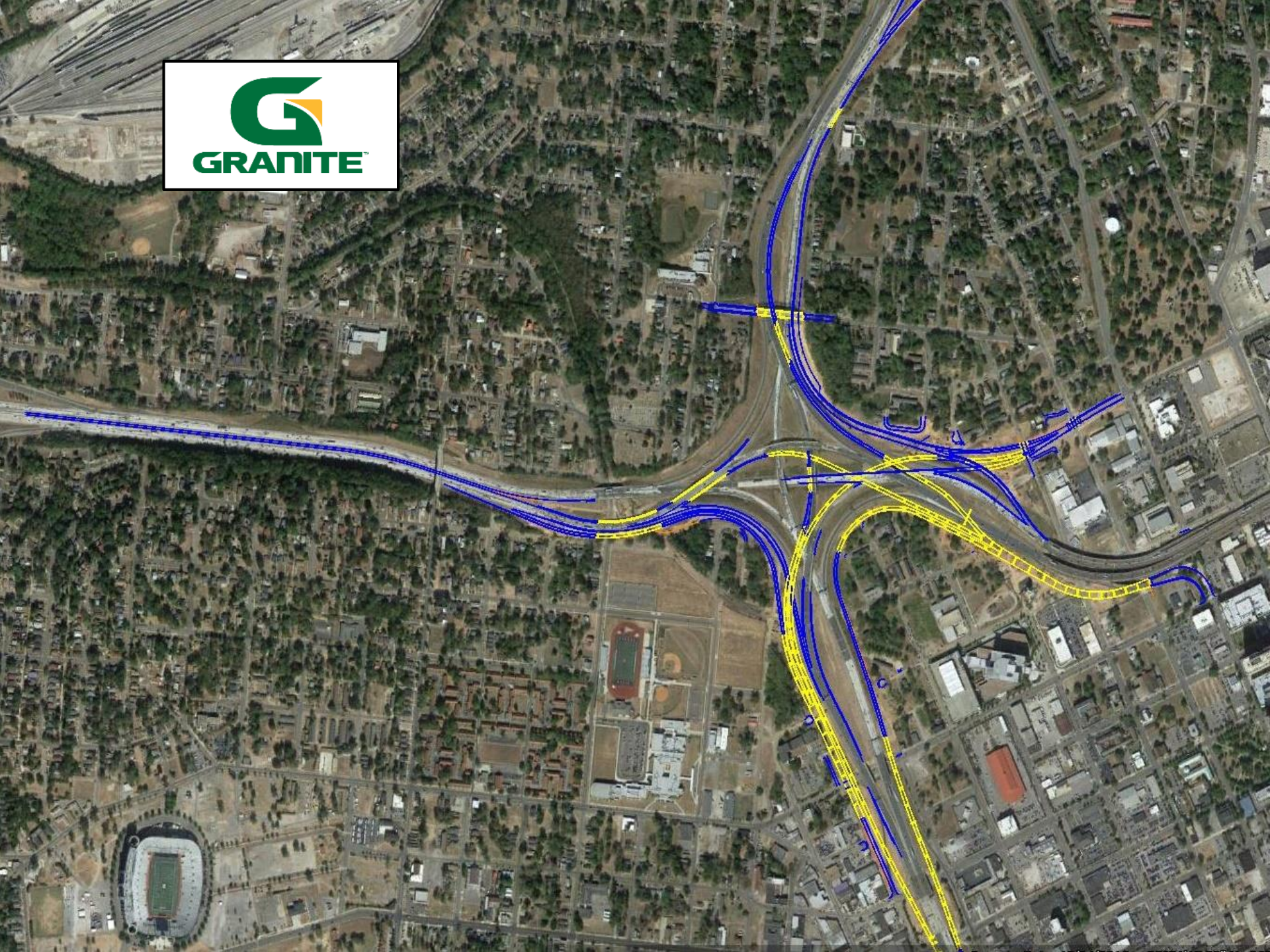
















Social Security Building





Social Security Building











16





GRANITE  
Link-Belt





Alabama Power









BUILDING THE FUTURE



EXIT 126

31 280

Caraway Blvd  
1 MILE

EXIT 125B  
22nd Street  
3/4 MILE

EXIT 125A

17th Street  
Down  
EXIT CLOSED  
EXIT ONLY

GROVE

GRANITE

CAT





















Carle

1-800-411-PAIN









Social Security







Social Security

INTERSTATE 59  
INTERSTATE 20

INTERSTATE 65

N













































# SOLDIER PILE WALL



























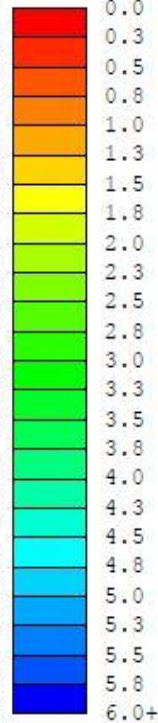




# AGGREGATE PIERS

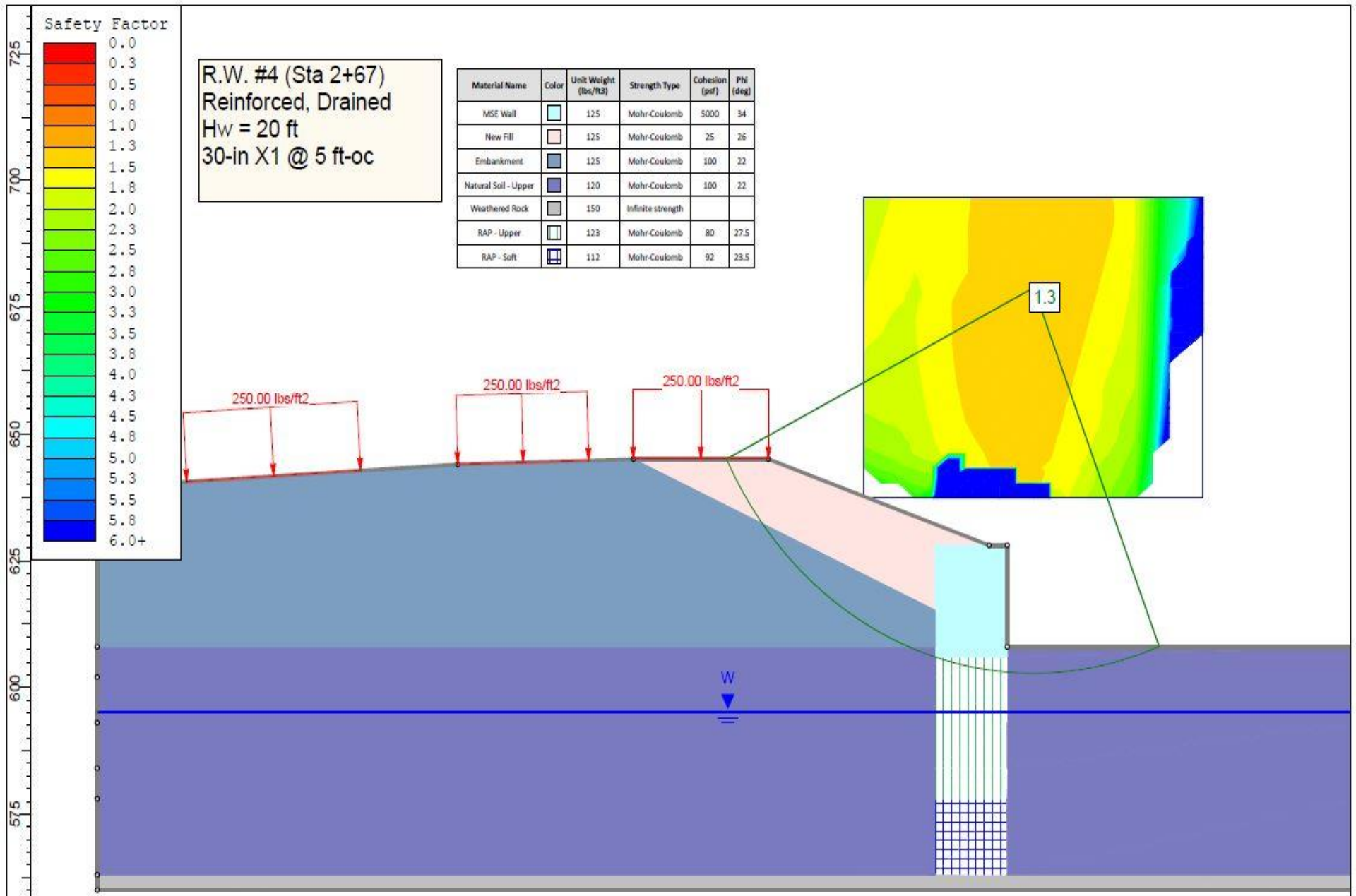
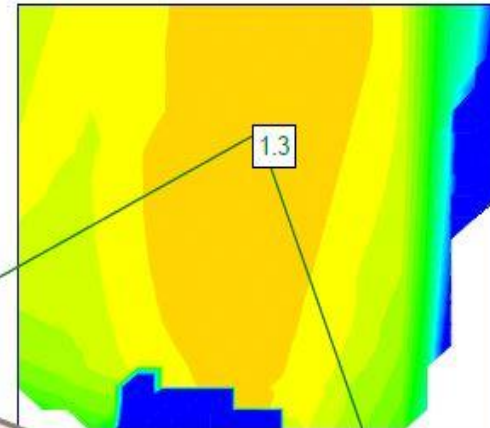


Safety Factor



R.W. #4 (Sta 2+67)  
Reinforced, Drained  
H<sub>w</sub> = 20 ft  
30-in X1 @ 5 ft-oc

| Material Name        | Color | Unit Weight (lbs/ft <sup>3</sup> ) | Strength Type     | Cohesion (psf) | Phi (deg) |
|----------------------|-------|------------------------------------|-------------------|----------------|-----------|
| MSE Wall             |       | 125                                | Mohr-Coulomb      | 5000           | 34        |
| New Fill             |       | 125                                | Mohr-Coulomb      | 25             | 26        |
| Embankment           |       | 125                                | Mohr-Coulomb      | 100            | 22        |
| Natural Soil - Upper |       | 120                                | Mohr-Coulomb      | 100            | 22        |
| Weathered Rock       |       | 150                                | Infinite strength |                |           |
| RAP - Upper          |       | 123                                | Mohr-Coulomb      | 80             | 27.5      |
| RAP - Soft           |       | 112                                | Mohr-Coulomb      | 92             | 23.5      |







Murkyville  
Gasson  
K... ..

CAT





























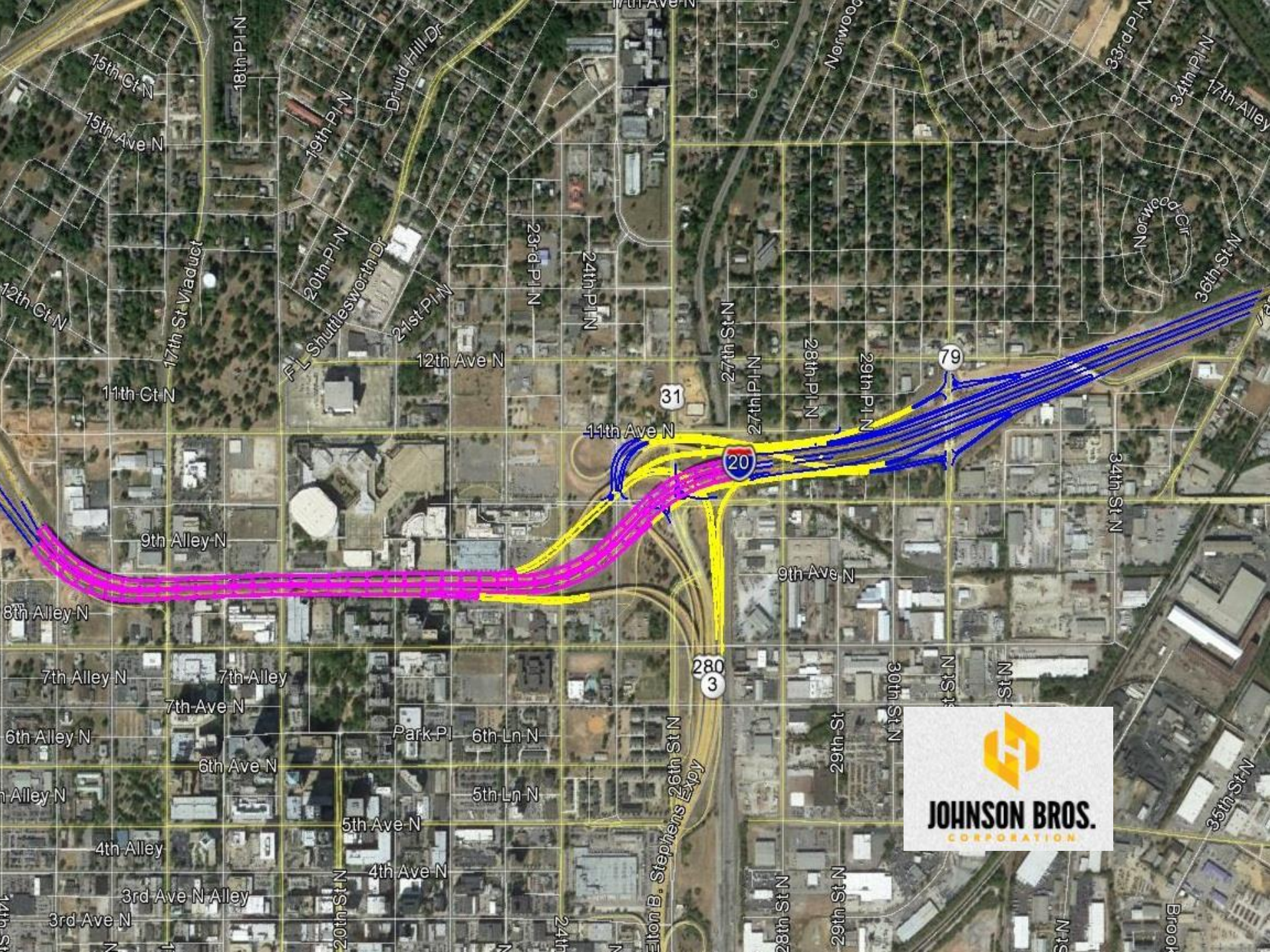












15th Ct N  
15th Ave N  
12th Ct N  
11th Ct N  
9th Alley N  
8th Alley N  
7th Alley N  
7th Alley  
7th Ave N  
6th Alley N  
6th Alley N  
6th Ave N  
6th Ln N  
5th Ln N  
4th Alley  
4th Ave N  
3rd Ave N Alley  
3rd Ave N  
18th Pl N  
19th Pl N  
20th Pl N  
21st Pl N  
23rd Pl N  
24th Pl N  
27th Pl N  
27th Pl N  
28th Pl N  
29th Pl N  
33rd Pl N  
34th Pl N  
17th Alley  
Norwood Cir  
36th St N  
34th St N  
35th St N  
17th Ave N  
Druid Hill Dr  
F.L. Shurtlesworth Dr  
12th Ave N  
11th Ave N  
9th Ave N  
2803  
31  
79  
20  
Elton B. Stephens Expwy  
26th St N  
29th St  
30th St N  
N St  
N St  
N St  
N St  
Brook





Phillips Academy

Sheraton/BJCC

Uptown



31

INTERSTATE  
59

INTERSTATE  
20





Phillips Academy

Sheraton/BJCC

Uptown

N

31

INTERSTATE  
59

INTERSTATE  
20









Airport

Uptown

BJCC/Sheraton  
Parking

INTERSTATE  
59

INTERSTATE  
20

31

N



Airport

N

Uptown

BJCC/Sheraton  
Parking

INTERSTATE  
59

INTERSTATE  
20

31











MEPRO

DON'T TRADE-IN TRAINING

APPROX 1000

ROAD CLOSED

ROAD CLOSED

















Link-Belt

Crane 5-1375





D

JGW

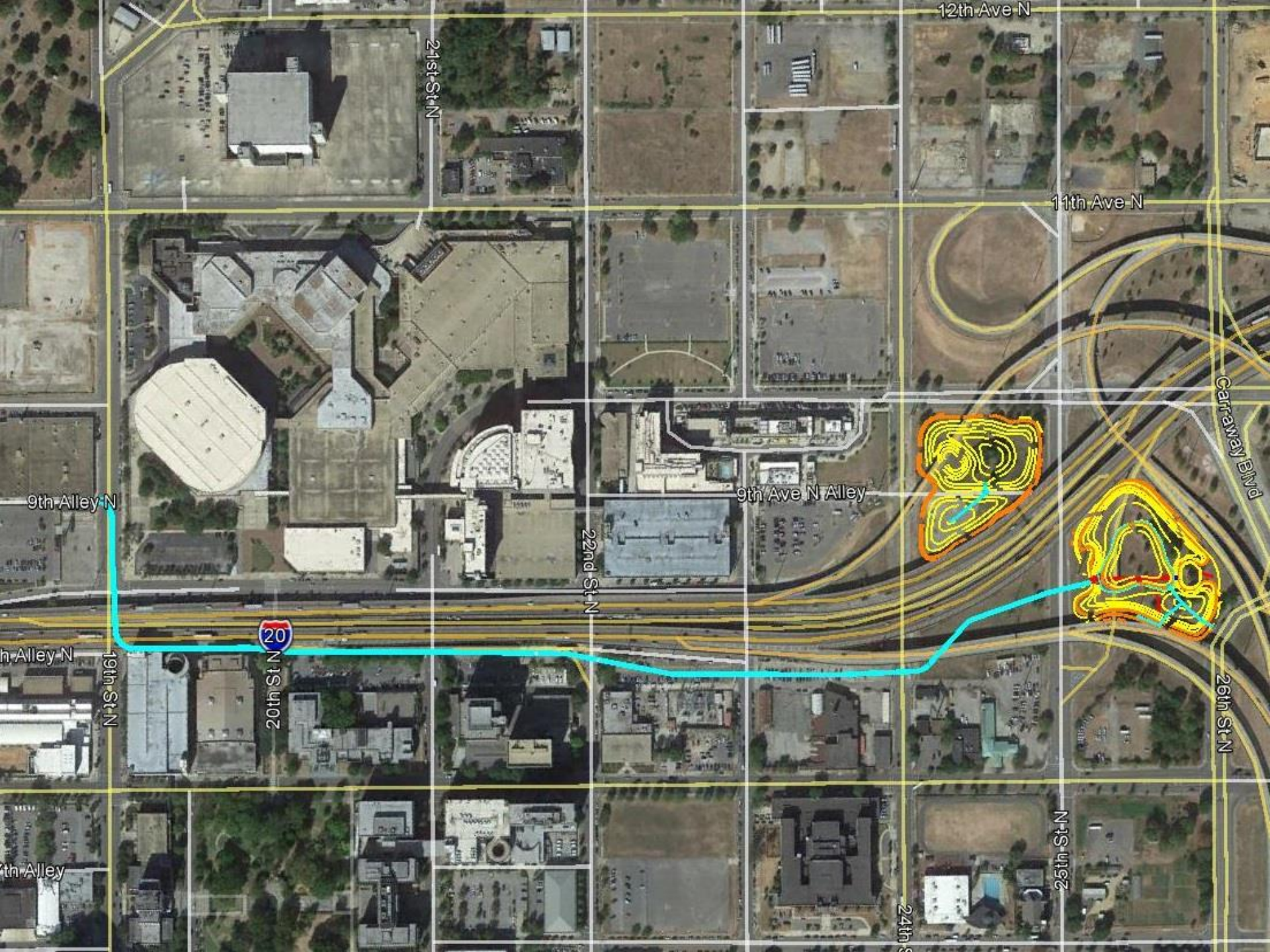






# THE CULVERT





12th Ave N

21st St N

11th Ave N

9th Alley N

9th Ave N Alley

22nd St N

Carraway Blvd

h Alley N

19th St N

20th St N

26th St N

h Alley

24th S

25th St N



# GROUND LEVEL PLAN SHEET - DETENTION PONDS

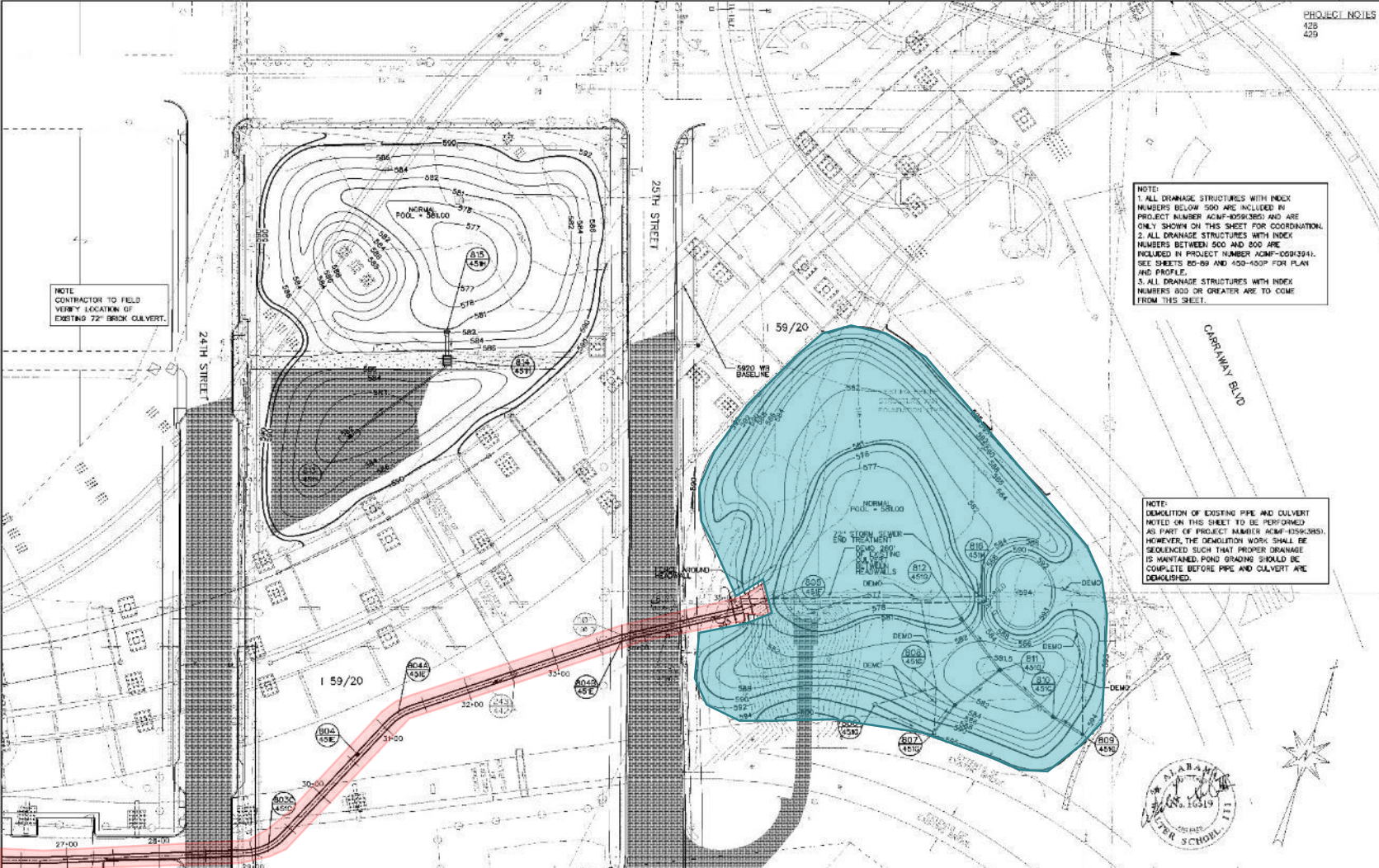
Records Plans April 14, 2017

| REFERENCE PROJECT NO | FISCAL YEAR | SHEET NO |
|----------------------|-------------|----------|
| ACMF-1059(384)       | 2017        | 890      |

PROJECT NOTES  
439  
439

NOTE:  
1. ALL DRAINAGE STRUCTURES WITH INDEX NUMBERS BELOW 500 ARE INCLUDED IN PROJECT NUMBER ACMF-1059(385) AND ARE ONLY SHOWN ON THIS SHEET FOR COORDINATION.  
2. ALL DRAINAGE STRUCTURES WITH INDEX NUMBERS BETWEEN 500 AND 800 ARE INCLUDED IN PROJECT NUMBER ACMF-1009(394). SEE SHEETS 80-89 AND 450-450P FOR PLAN AND PROFILE.  
3. ALL DRAINAGE STRUCTURES WITH INDEX NUMBERS 800 OR GREATER ARE TO COME FROM THIS SHEET.

NOTE:  
DEMOLITION OF EXISTING PIPE AND CULVERT NOTED ON THIS SHEET TO BE PERFORMED AS PART OF PROJECT NUMBER ACMF-1059(385). HOWEVER, THE DEMOLITION WORK SHALL BE SEQUENCED SUCH THAT PROPER DRAINAGE IS MAINTAINED. POND GRADING SHOULD BE COMPLETE BEFORE PIPE AND CULVERT ARE DEMOLISHED.



NOTE:  
CONTRACTOR TO FIELD VERIFY LOCATION OF EXISTING 72" BRICK CULVERT.

|                |            |          |                |                                      |       |              |   |         |
|----------------|------------|----------|----------------|--------------------------------------|-------|--------------|---|---------|
| RESPONSIBLE PE | SUPERVISOR | DESIGNER | PLAN SUBMITTAL | ALABAMA DEPARTMENT OF TRANSPORTATION | HORIZ | SCALE (FEET) | SHEET TITLE                               | ROUTE   |
| DATE:          | DATE       | DATE     | DATE           | DATE                                 | DATE  | DATE         | GROUND LEVEL PLAN SHEET - DETENTION PONDS | 1-59/20 |









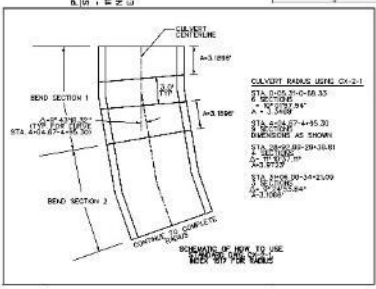
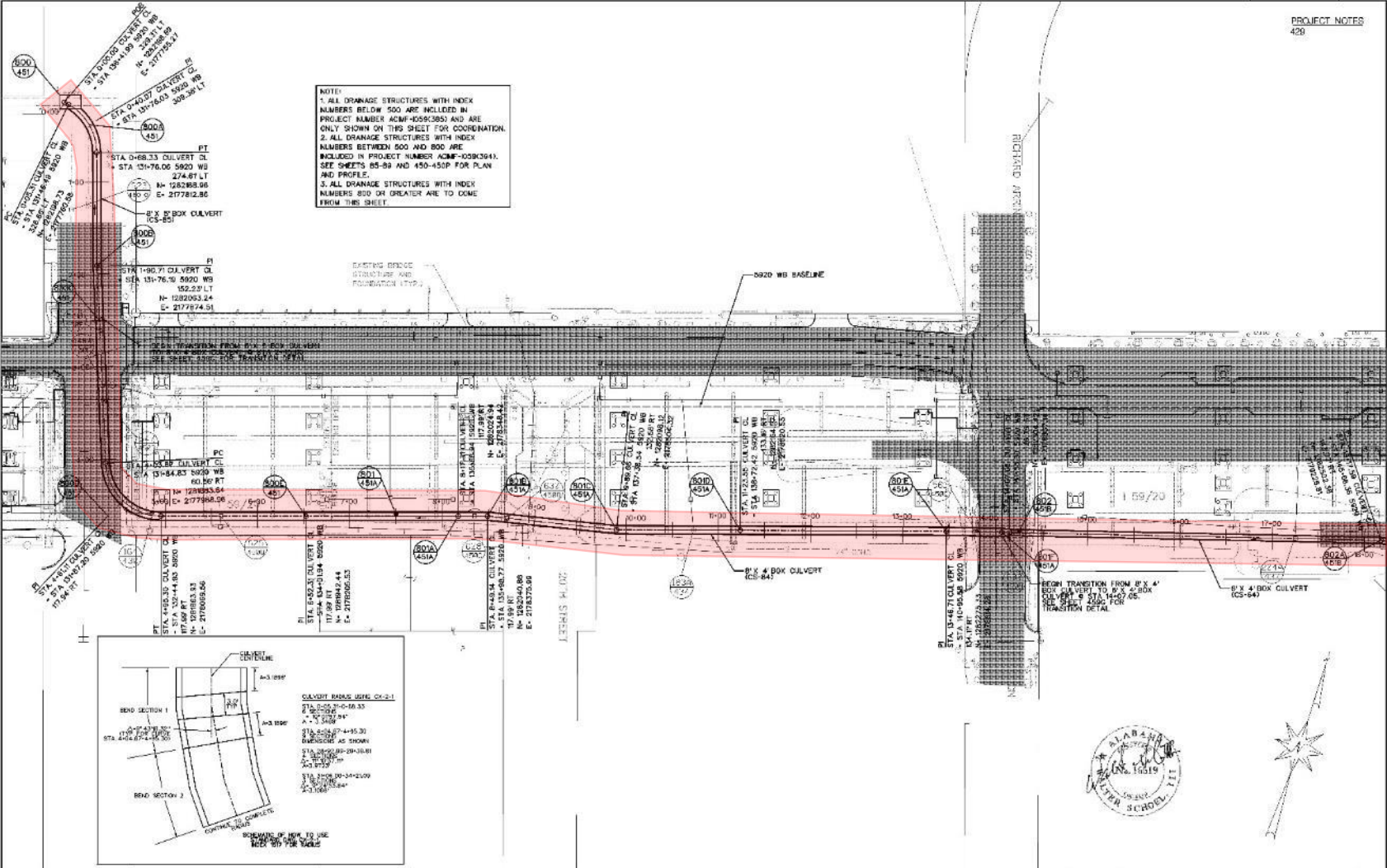
# GROUND LEVEL PLAN SHEET - CULVERT

Records Plans April 14, 2017

| REFERENCE PROJECT NO | FISCAL YEAR | SHEET NO |
|----------------------|-------------|----------|
| ACMF-1069(384)       | 2017        | 89A      |

PROJECT NOTES  
420

NOTE:  
1. ALL DRAINAGE STRUCTURES WITH INDEX NUMBERS BELOW 500 ARE INCLUDED IN PROJECT NUMBER ACMF-1069(384) AND ARE ONLY SHOWN ON THIS SHEET FOR COORDINATION.  
2. ALL DRAINAGE STRUCTURES WITH INDEX NUMBERS BETWEEN 500 AND 800 ARE INCLUDED IN PROJECT NUMBER ACMF-1069(384). SEE SHEETS 85-89 AND 450-459 FOR PLAN AND PROFILE.  
3. ALL DRAINAGE STRUCTURES WITH INDEX NUMBERS 800 OR GREATER ARE TO COME FROM THIS SHEET.



|                |            |          |                |                                      |                                  |                                   |         |
|----------------|------------|----------|----------------|--------------------------------------|----------------------------------|-----------------------------------|---------|
| RESPONSIBLE PE | SUPERVISOR | DESIGNER | PLAN SUBMITTAL | ALABAMA DEPARTMENT OF TRANSPORTATION | 50 0 50<br>SCALE (FEET)<br>HORIZ | SHEET TITLE                       | ROUTE   |
| DATE           | DATE       | DATE     | DATE           |                                      |                                  | GROUND LEVEL PLAN SHEET - CULVERT | 1-59/20 |





Central

CAT





# Segmental Bridge Construction

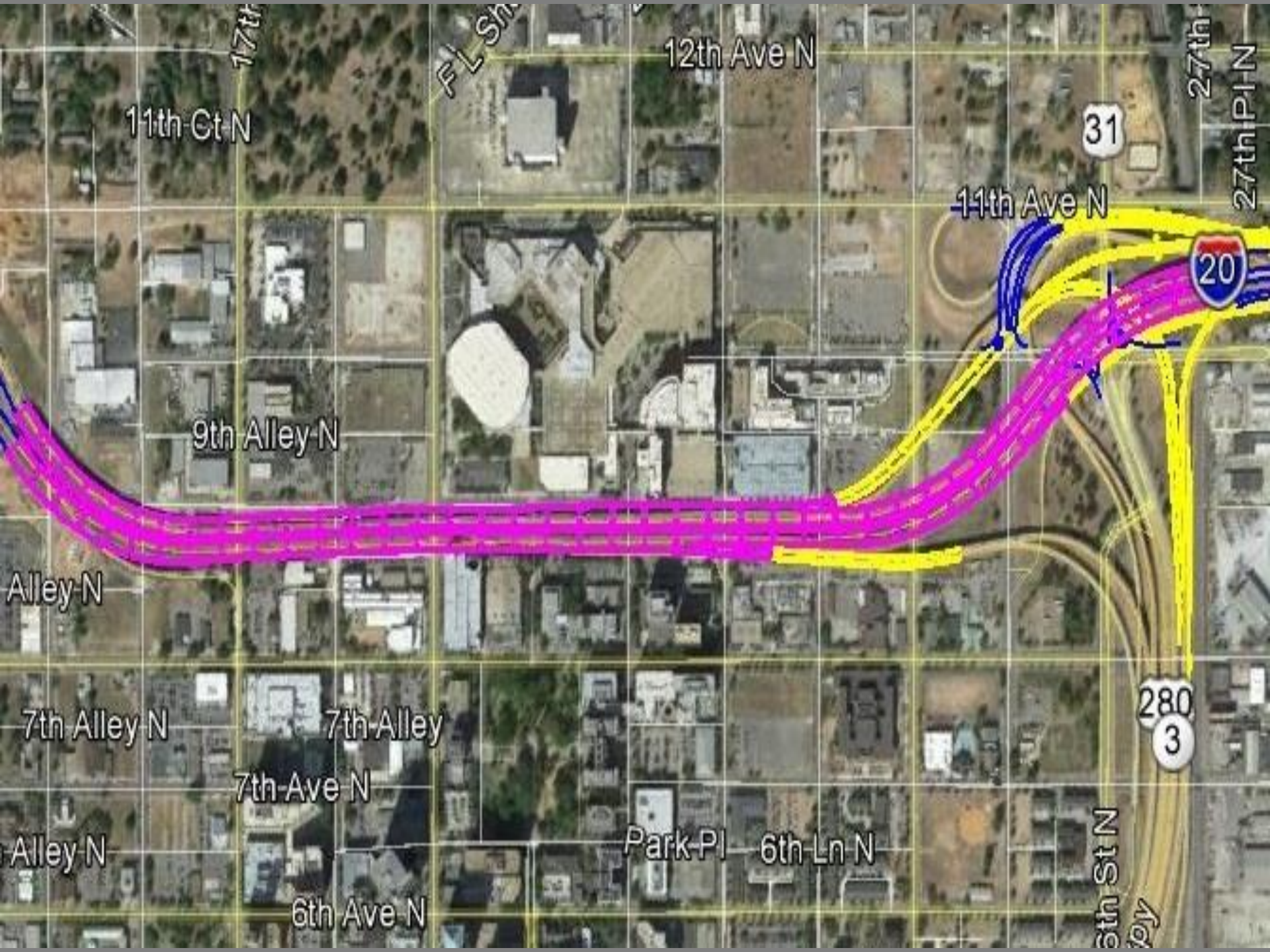
Erection



Foundations

Casting





11th Ct N

9th Alley N

7th Alley N

Alley N

6th Ave N

12th Ave N

11th Ave N

27th PI-N

31

20

280  
3

6th St N

6th Ln N

Park Pl

7th Alley

7th Ave N

FL St

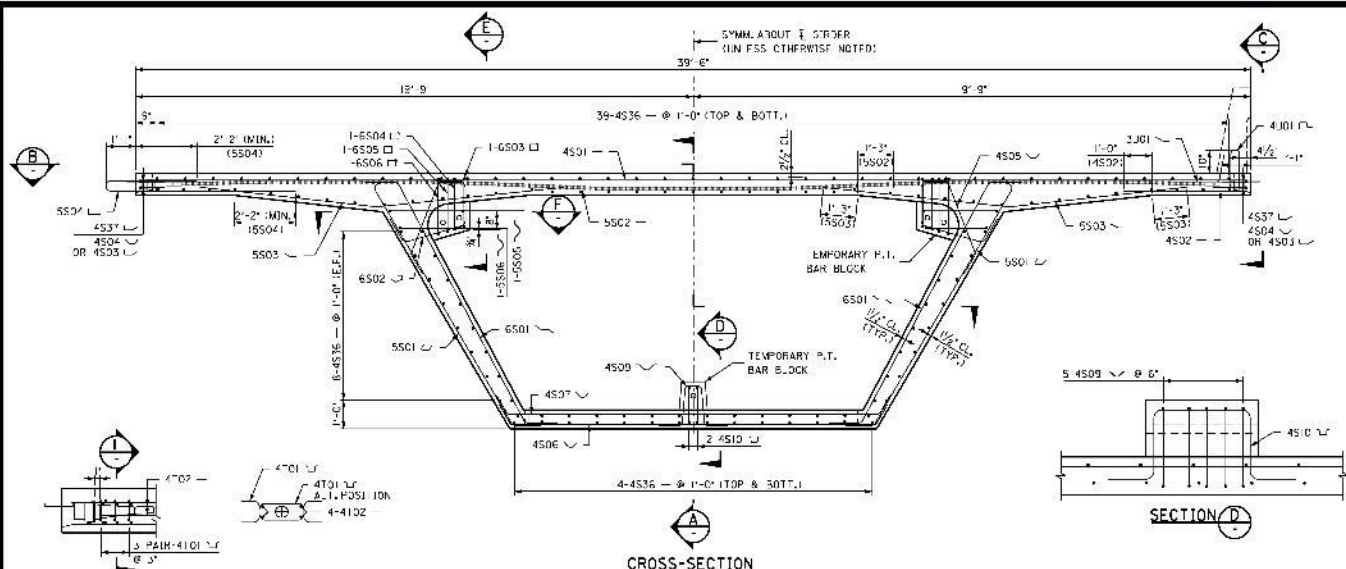
Joy





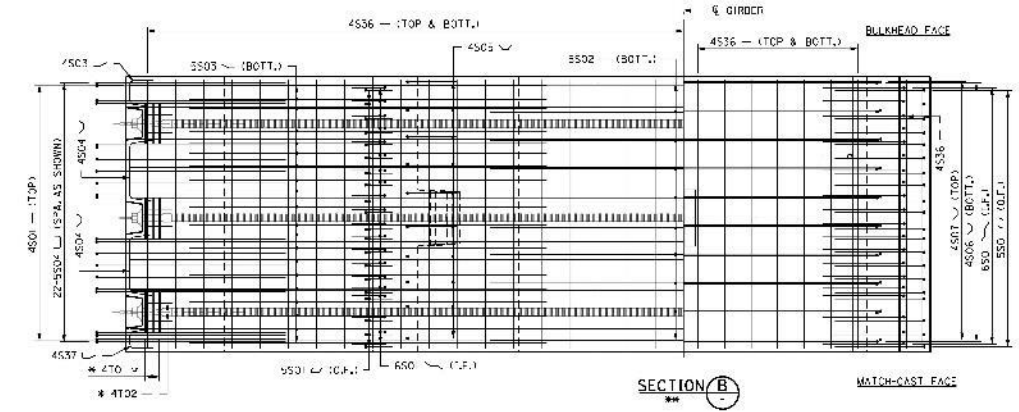


| REFERENCES    | FIG. NO. | SHEET | TOTAL |
|---------------|----------|-------|-------|
| ASMT. 1059-08 | 2015     | 29    | 31    |

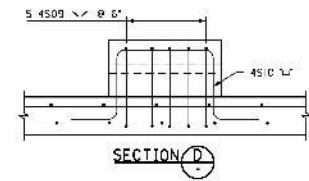


**CROSS-SECTION**  
(RIGHT GIRDER S-WAY, LEFT GIRDER OPPOSITE ABUT. & GIRDER.)

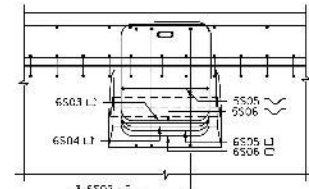
**SECTION ALONG TENDON**  
**SECTION I**  
**TRANSVERSE TENDON REINFORCING DETAIL**  
(TYPICAL EACH TRANSVERSE TENDON ANCHOR)



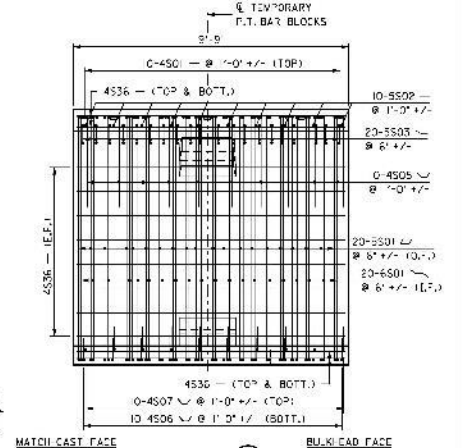
**SECTION B**  
MATCH-CAST FACE



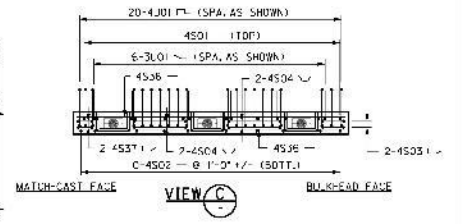
**SECTION D**



**SECTION E**  
(WEB REINFORCING NOT SHOWN FOR CLARITY)



**SECTION A**  
MATCH-CAST FACE BULKHEAD FACE



**VIEW C**  
MATCH-CAST FACE BULKHEAD FACE

- NOTES:**
1. MINIMUM CONCRETE COVER = 2 1/2" TOP OF TOP SLAB, 1 1/2" ALL OTHER PLACES.
  2. D.O. DENOTES OUTSIDE FACE, I.P. DENOTES INSIDE FACE.
  3. I.P. DENOTES EACH FACE.
  4. S.P.A.C. ALL REINFORCING TO CLEAR P.T. BLOC'S AND ANCHORS.
  5. DETAILS SHOWN ON THIS SHEET ARE FOR A SEGMENT IN A TANGENT SECTION OF THE ALIGNMENT.
  6. FOR TRANSVERSE P.T. DETAILS, SEE TRANSVERSE P.T. DETAILS SHEETS.

\* TYPICAL EACH TRANSVERSE TENDON ANCHOR.  
\*\* TEMPORARY P.T. BAR BLOCK REINFORCING NOT SHOWN FOR CLARITY.

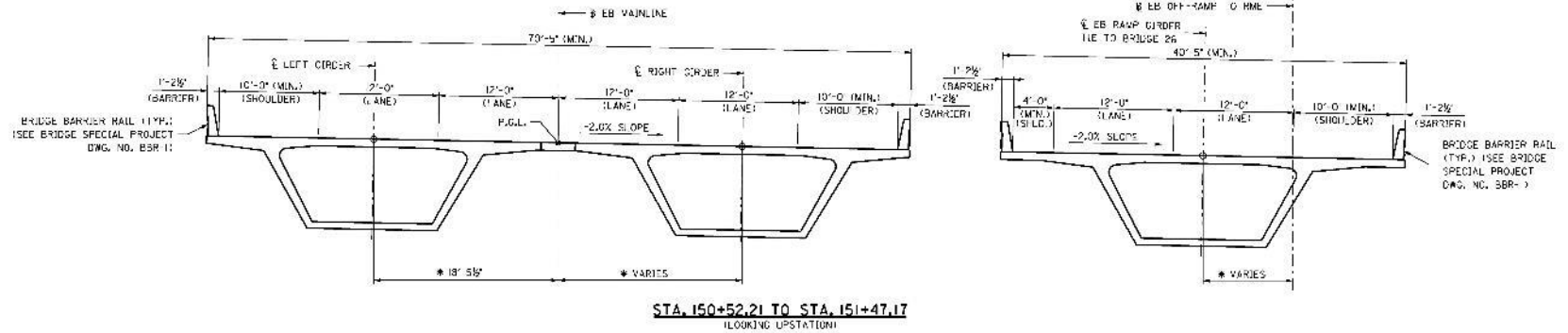
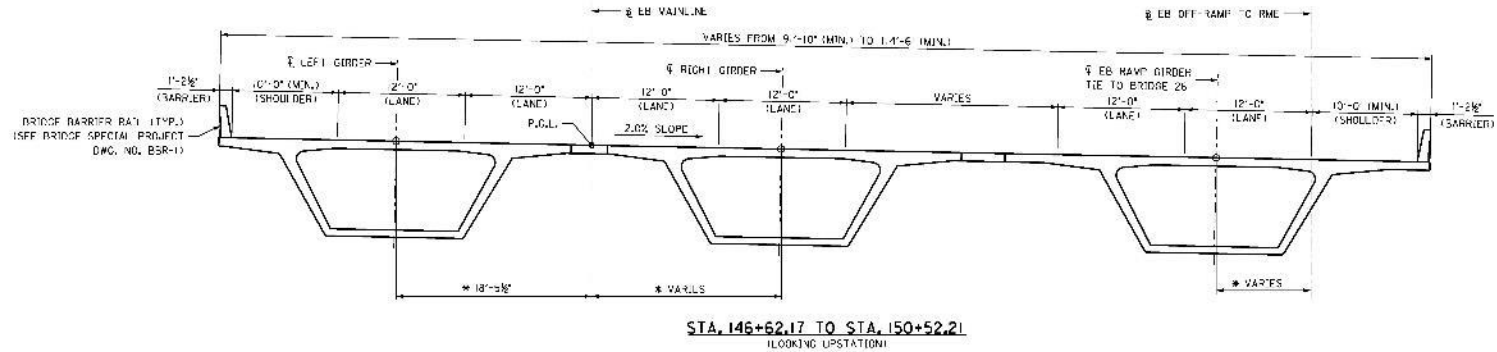
| ALABAMA DEPARTMENT OF TRANSPORTATION |  |
|--------------------------------------|--|
| BRIDGE SHEET NO. 109 OF 174          | CORVEN ENGINEERING, INC.   |
| REVISIONS                            | PROJECT NO. ACIMF-1059(385)<br>I-69/20 CBD BRIDGE REPLACEMENT<br>BRIDGE'S 28 (WB) & 30 (EB)<br>JEFFERSON COUNTY, ALABAMA |
|                                      | TYPE 1A TYPICAL SEGMENT REINFORCEMENT  |
| ESTIMATED BY                         | DATE   |
| CHECKED BY                           | DATE   |
| DESIGNED BY                          | DATE   |

SECTION FILE SPECIFICATIONS

P.C.B.C. SYSTEM AVAILABLE



|                |             |              |
|----------------|-------------|--------------|
| REFERENCES     | FISCAL YEAR | SHEET NUMBER |
| PROJECT NUMBER | 2015        | 26/27        |
| SHEET NUMBER   |             |              |



**NOTES:**

1. DIMENSIONS SHOWN ARE MEASURED PARALLEL TO EB MAINLINE.
  2. STATIONS SHOWN ARE ALONG EB MAINLINE.
  3. DIMENSIONS PREFIXED WITH AN ASTERISK (\*) ARE MEASURED IN THE HORIZONTAL PLANE.
- ALL OTHER DIMENSIONS ARE MEASURED ALONG THE SLOPE OF THE BRIDGE DECK.

| ALABAMA DEPARTMENT OF TRANSPORTATION |              |  |            |
|--------------------------------------|--------------|--|------------|
| BRIDGE SHEET NO. 32 OF 474           |              | CORVEN ENGINEERING, INC.                         |            |
| REVISIONS                            |              | PROJECT NO. ACIMF-1059(385)                      |            |
|                                      |              | I-69/20 CBD BRIDGE REPLACEMENT                   |            |
|                                      |              | BRIDGES 28 (WB) & 30 (EB)                        |            |
|                                      |              | JEFFERSON COUNTY, ALABAMA                        |            |
|                                      |              | SUPERSTRUCTURE CROSS-SECTIONS 3<br>(EB MAINLINE) |            |
| ESTIMATE QUANTITIES                  | DESIGNED BY  | ECJ  | DRAWN BY   |
| COMPILED BY                          | CHECKED BY   | CM   | DATE DRAWN |
| APPROVED BY                          | DATE CHECKED | 1-18   | SCALE      |

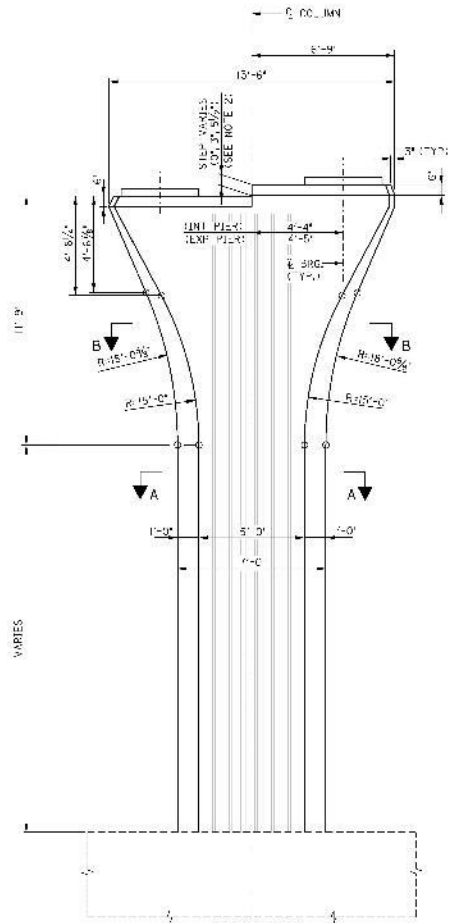
SECTION FILE SHEET LOCATION

P.0000 SYSTEM DATE/TIME

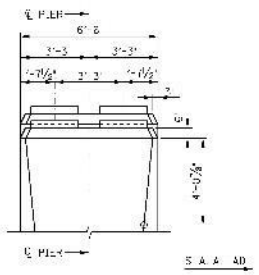


|                    |             |          |
|--------------------|-------------|----------|
| SECTION            | FISCAL YEAR | SHEET    |
| PROJECT NUMBER     | 2017        | NUMBER   |
| ACT NO. 1059 (385) | 2017        | 26 OF 29 |

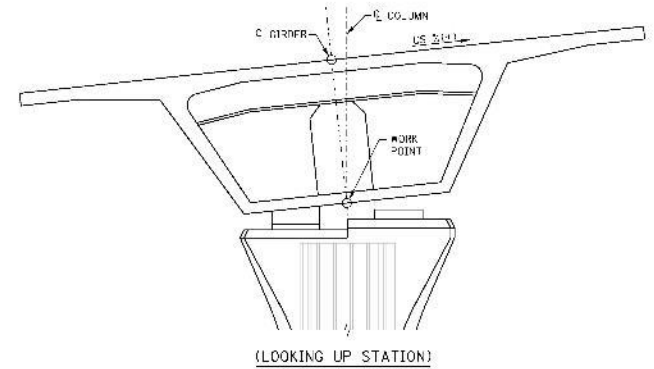
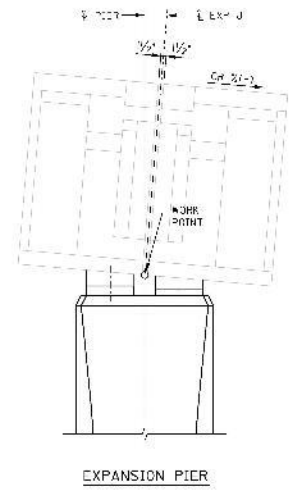
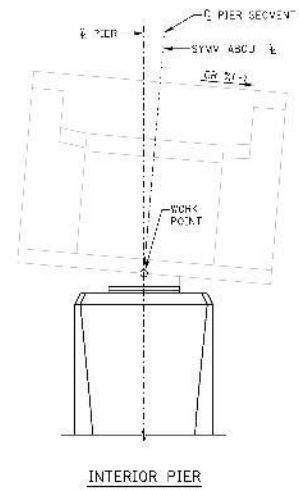
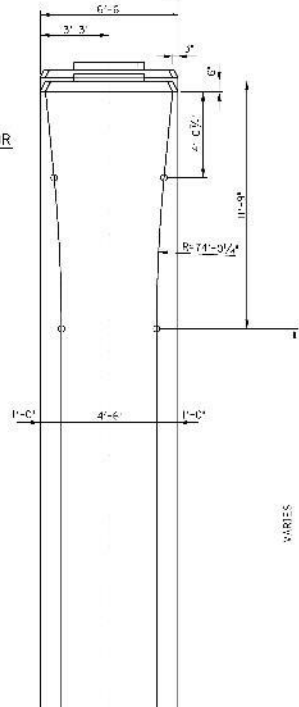
EXPANSION PIER SPECIFICATIONS



**EXPANSION PIER**



**INTERIOR PIER**



- NOTES:**
- CAP STEP SHOWN FOR POSITIVE CROSS SLOPE ONLY. LEFT HALF OF CAP IS LOWER ON NEGATIVE CROSS-SLOPE. SEE SHEETS 420-445 FOR CAP STEP DIMENSIONS.
  - FOR DETAILS CONCERNING COLUMNS REQUIRING LIGHTNING CONDUIT SEE ELECTRICAL SHEETS.

| ALABAMA DEPARTMENT OF TRANSPORTATION |                                      |         |       |
|--------------------------------------|--------------------------------------|---------|-------|
| BRIDGE SHEET NO. 417 OF 474          | VOLKERT, INC. - CONSULTING ENGINEERS |         |       |
| REVISIONS                            | PROJECT NO. ACIMF-1059(385)          |         |       |
|                                      | I-59/20 CBD BRIDGE REPLACEMENT       |         |       |
|                                      | BRIDGES 29 (WB) & 30 (EB)            |         |       |
|                                      | JEFFERSON COUNTY, ALABAMA            |         |       |
|                                      | TYPICAL PIER COLUMN DETAILS          |         |       |
|                                      | (OF 3)                               |         |       |
| DATE                                 | BY                                   | CHECKED | SCALE |
| 02/12/15                             | 02/12/15                             |         |       |

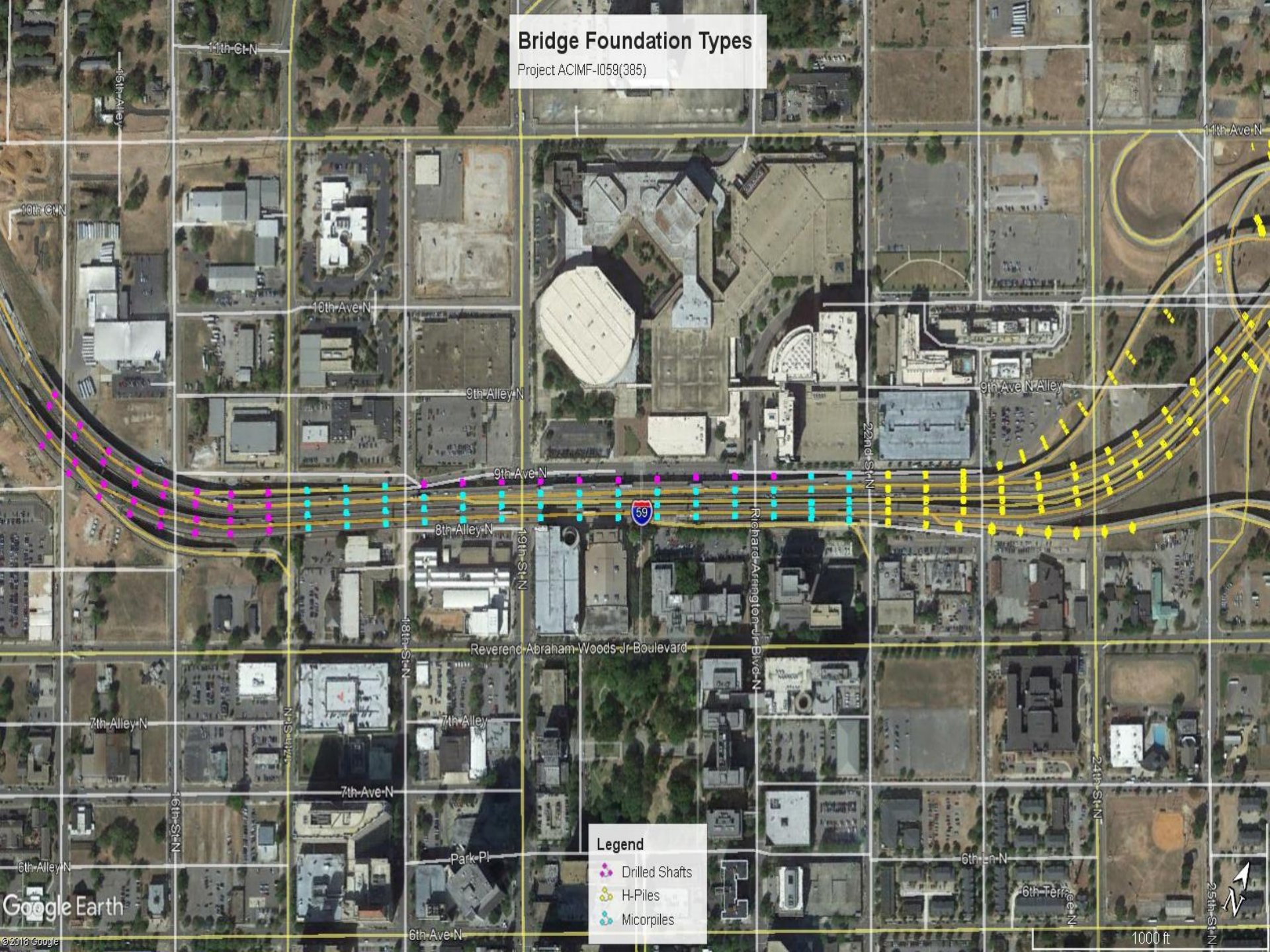


# FOUNDATIONS



# Bridge Foundation Types

Project ACIMF-1059(385)



**Legend**

- Drilled Shafts
- H-Piles
- Micropiles











VOLVO





DEERE

United

MC 400  
16





United  
Rentals

TRENCH SAFETY  
800-UR-RENTS

United  
Rentals  
TRENCH SAFETY  
800-UR-RENTS









remember MICROPILES?





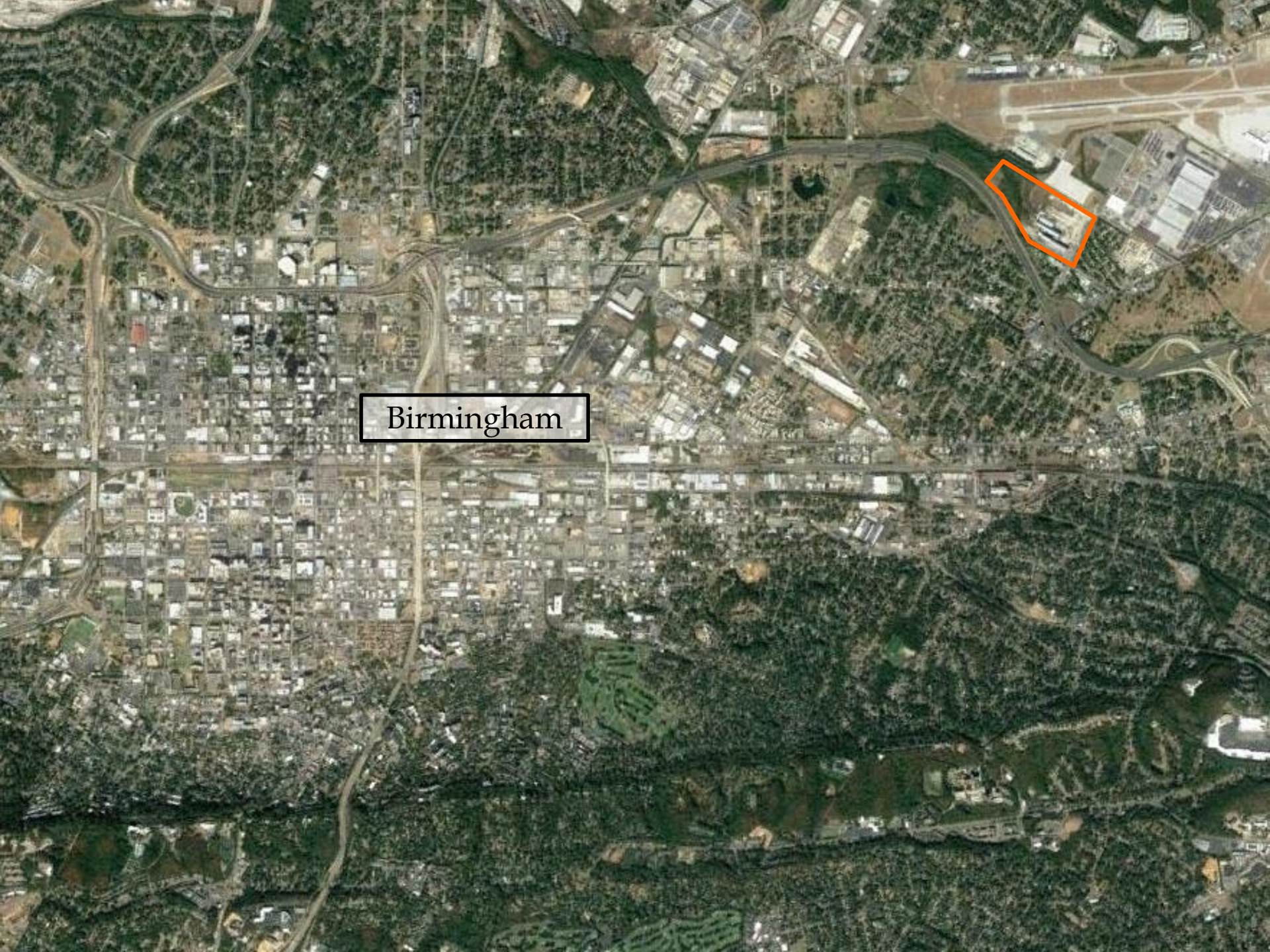






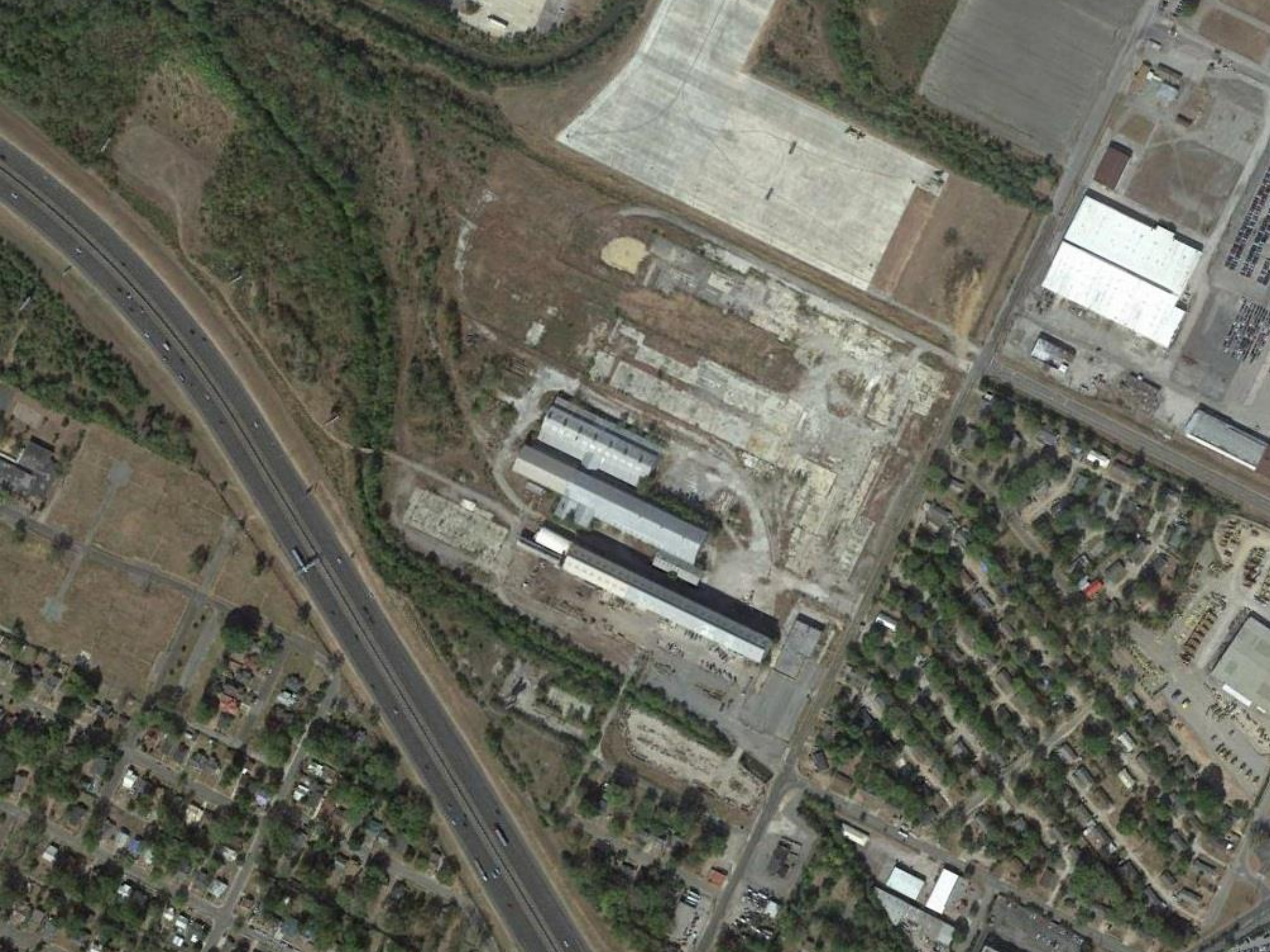
CASTING YARD





Birmingham





























ERIE

ERIE

ERIE



# SEGMENT CASTING













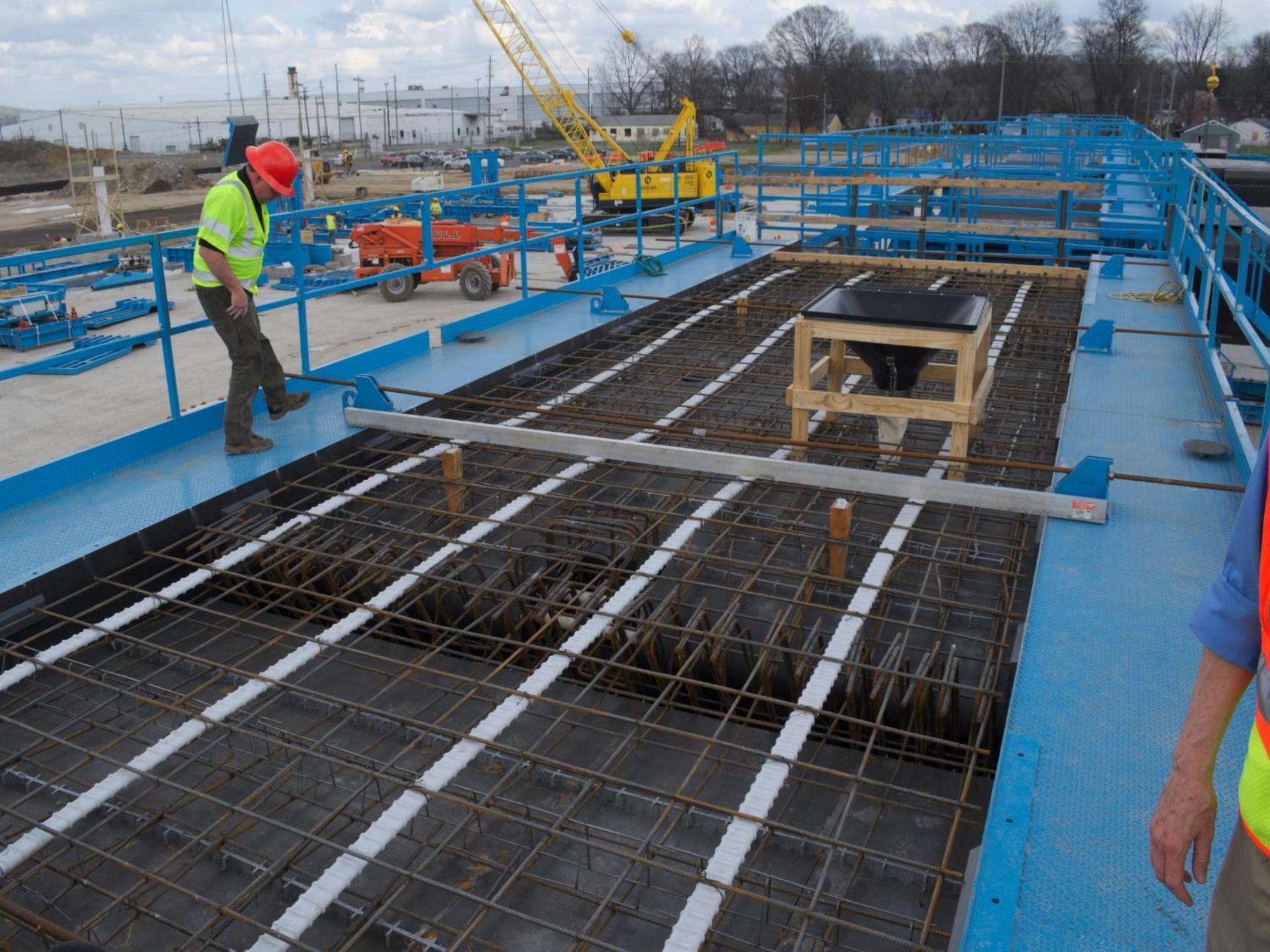




























ROTABELT  
1316













Kirkpatrick

MAEK

JFK-4275

















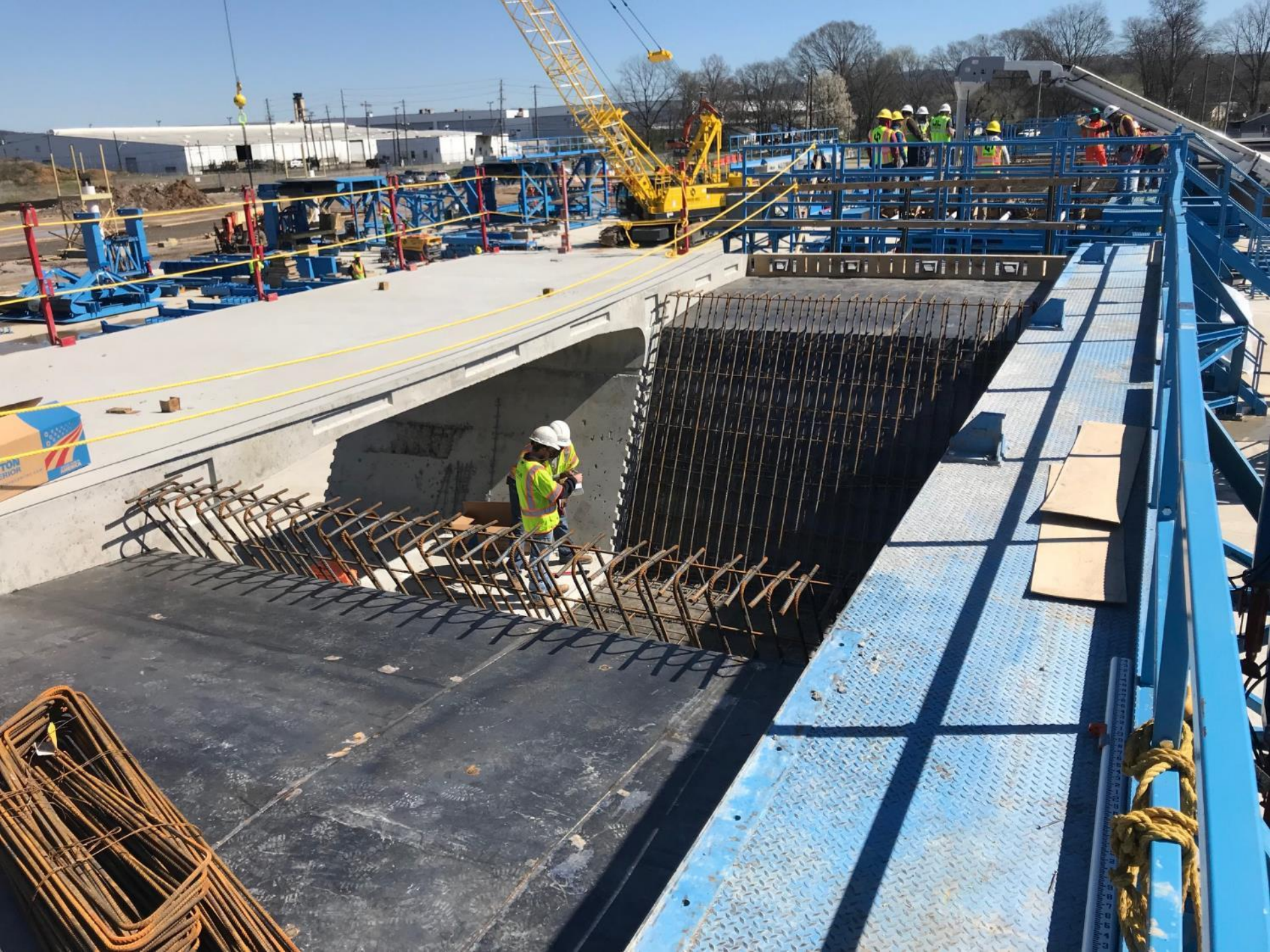










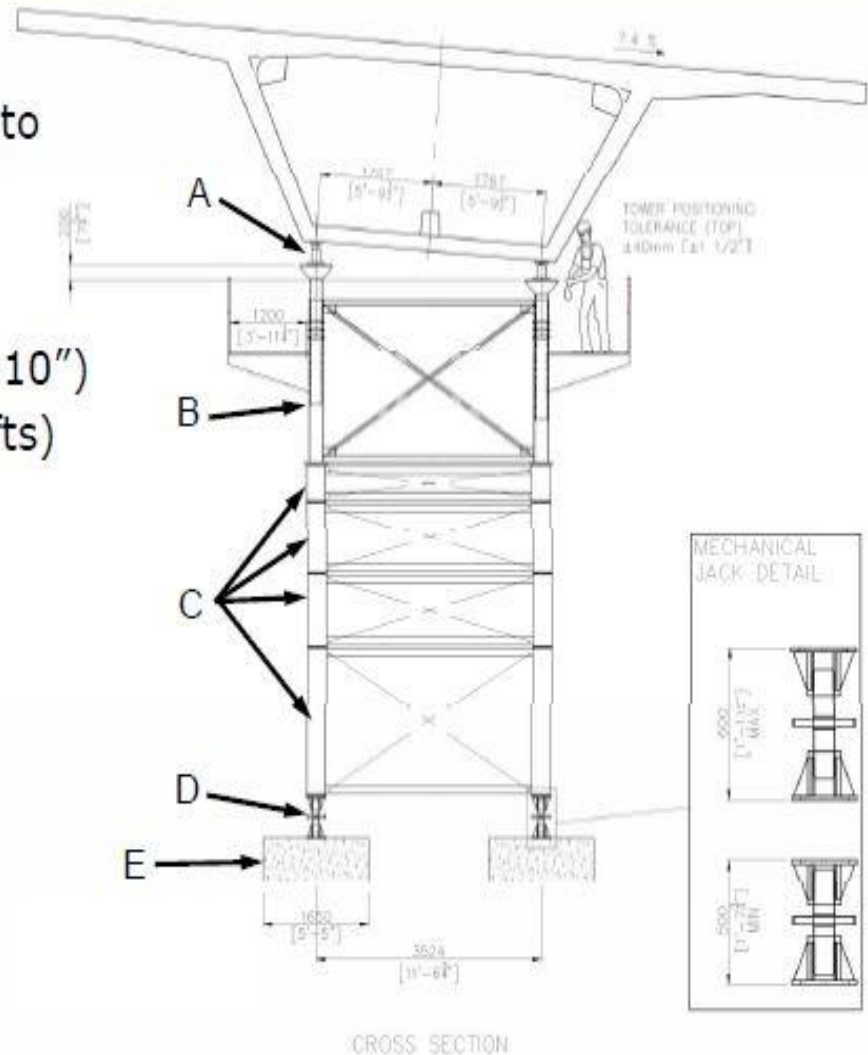




ERECTION



- Shoring towers are made of (from top to bottom):
  - Hydraulic jacks (10" to 1'-2")
  - Telescopic tower head with working platform (8'-2" to 10'-10")
  - Scaffolding tower base (4 shafts)  
 Composed of elements of
    - » 1' - 7 3/4" Sections
    - » 3' - 3 3/4" Sections
    - » 6' - 6 3/4" Sections
  - Mechanical jacks (1'-8" to 2')
- The shoring towers are supported on concrete pads (E)





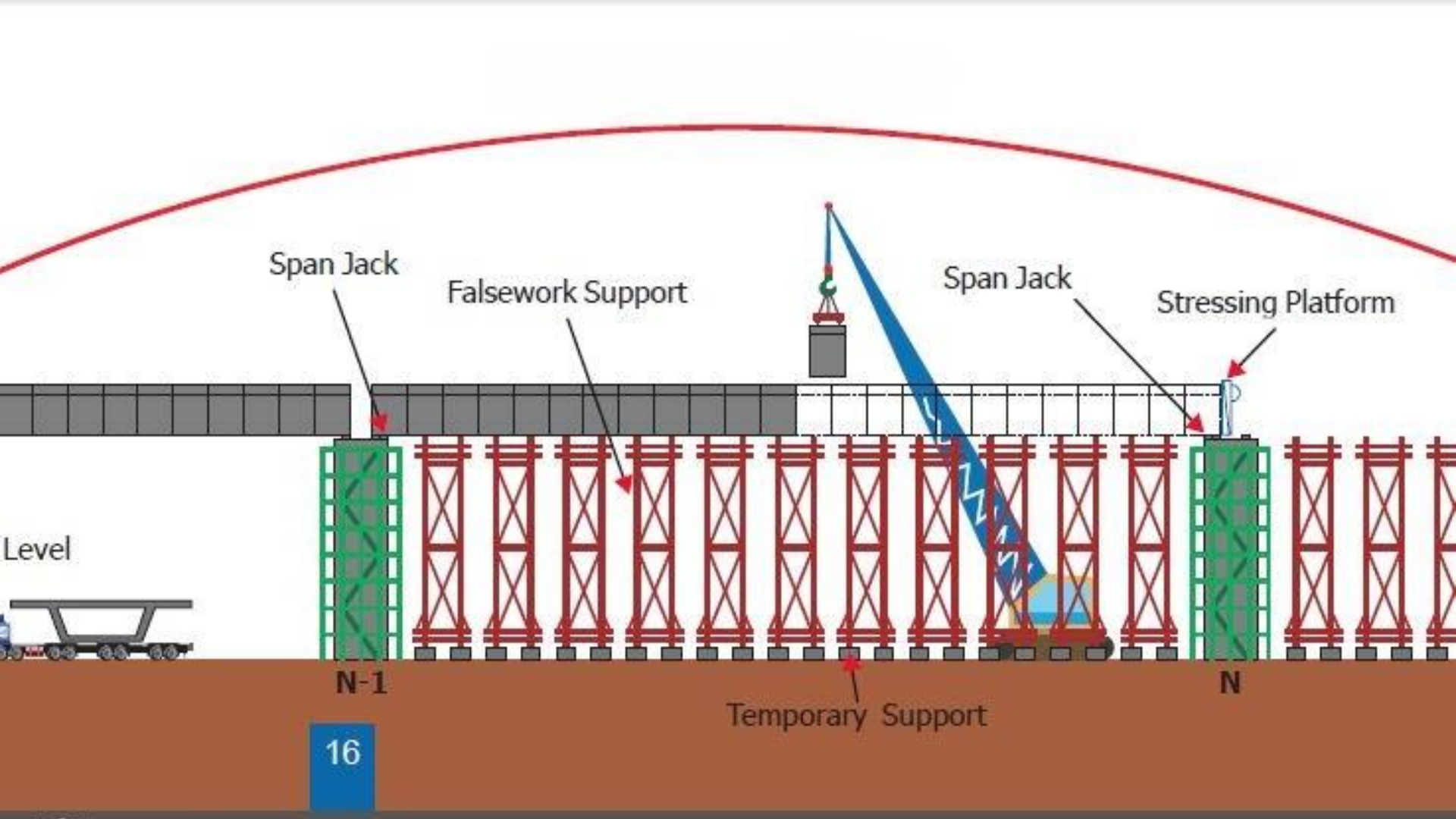


JAYA SINAR CORPORATION  
BOSCAR REFINARA CONTRACTING

## SHORING TOWER METHOD & FOUNDATIONS







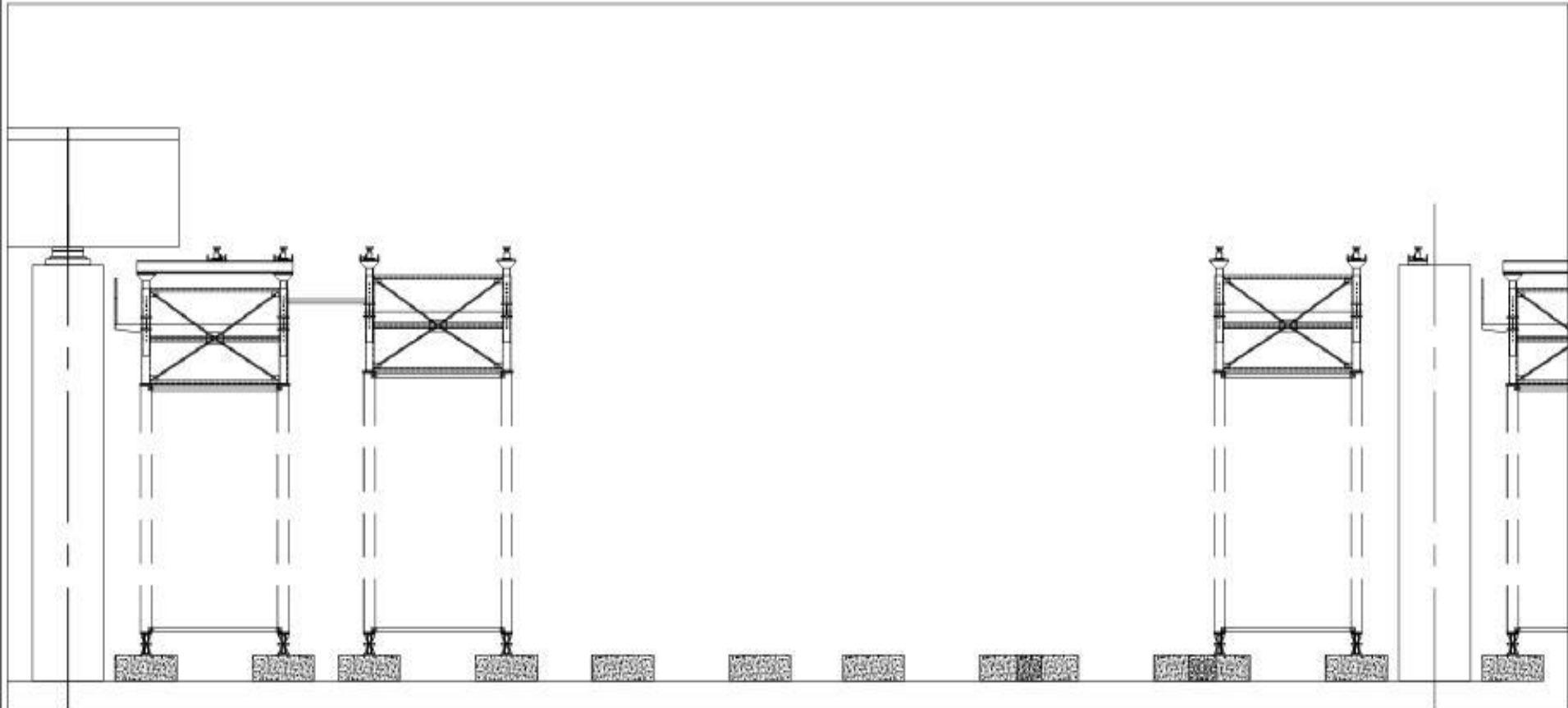




OSCAR RIVERA CONTRACTING  
CORPORATION

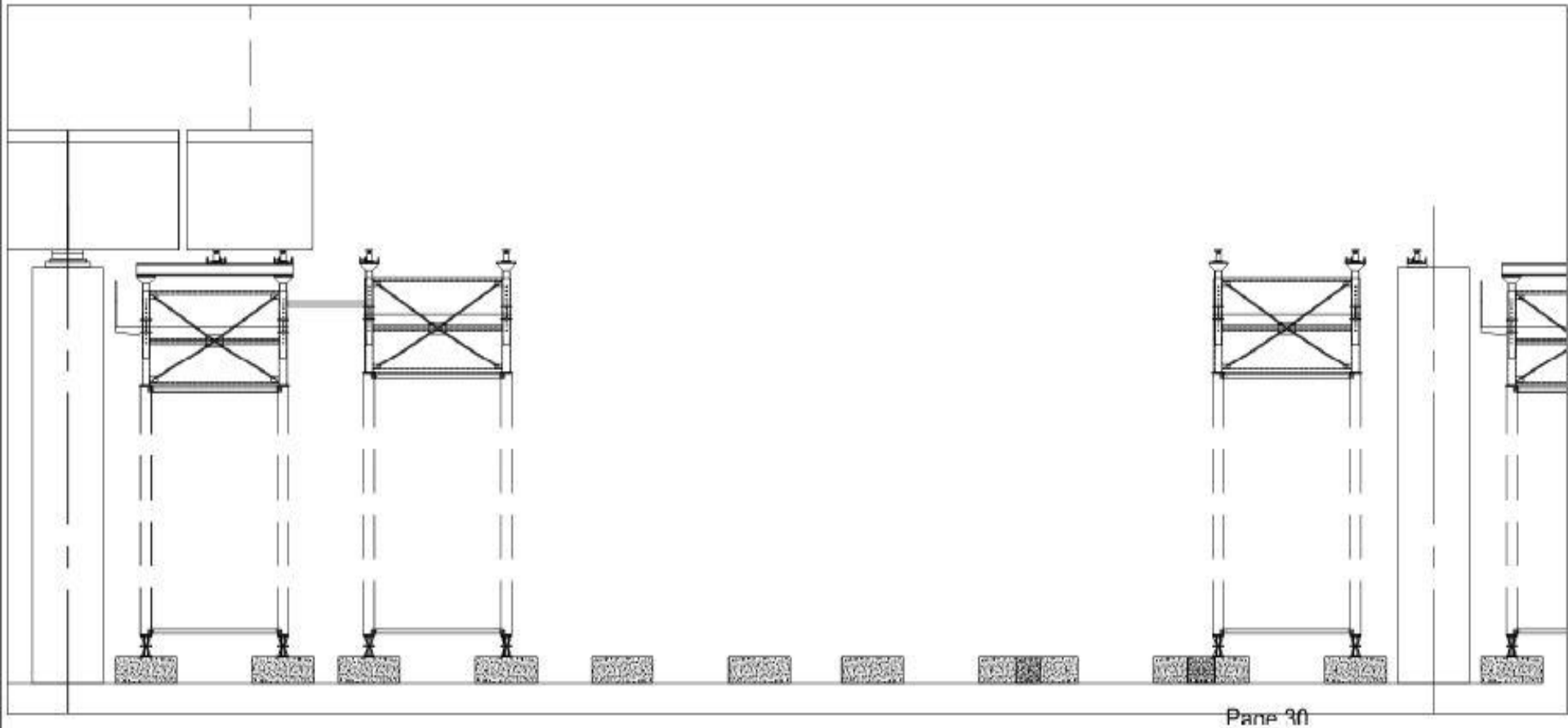
## SHORING TOWER METHOD & FOUNDATIONS

Shoring Tower Layout for Typical Span:



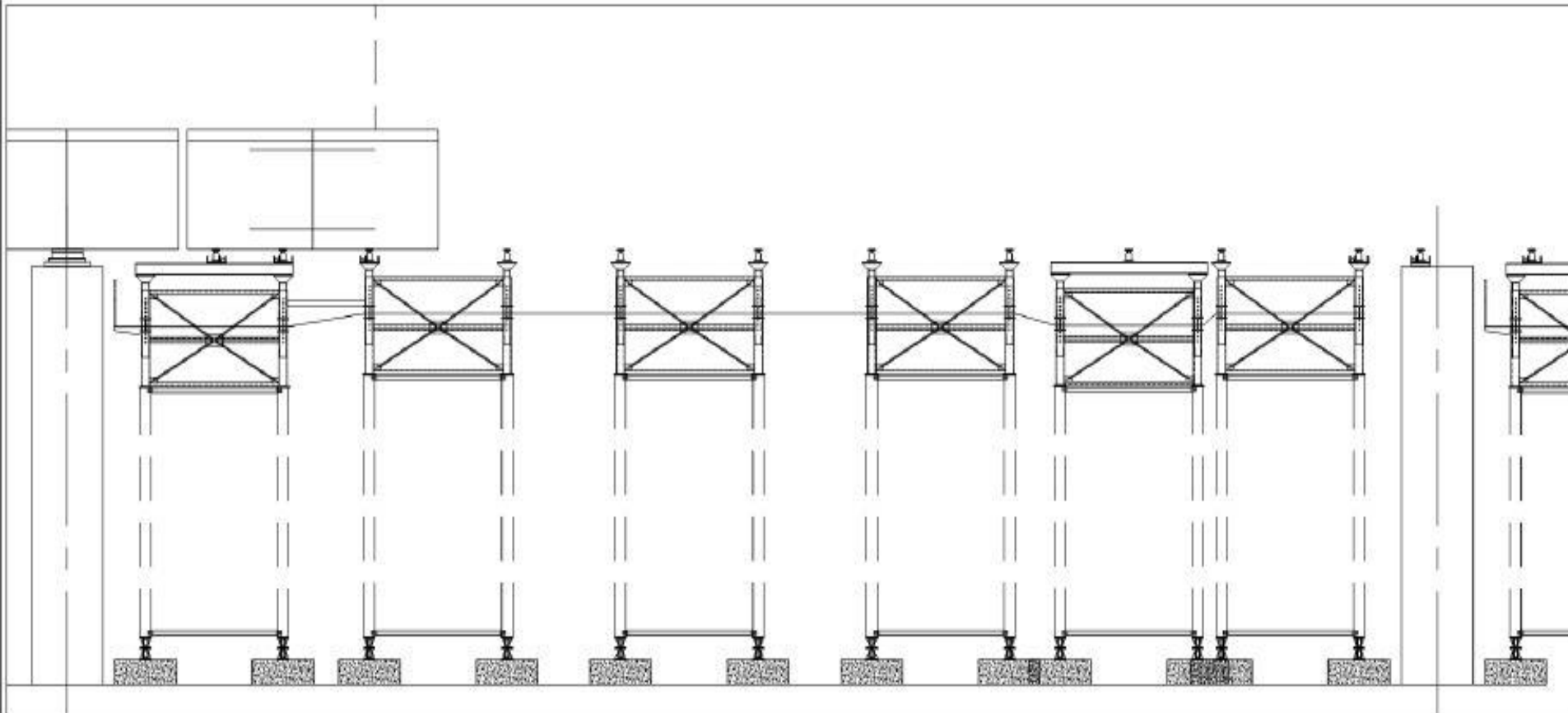


## Shoring Tower Layout for Typical Span:



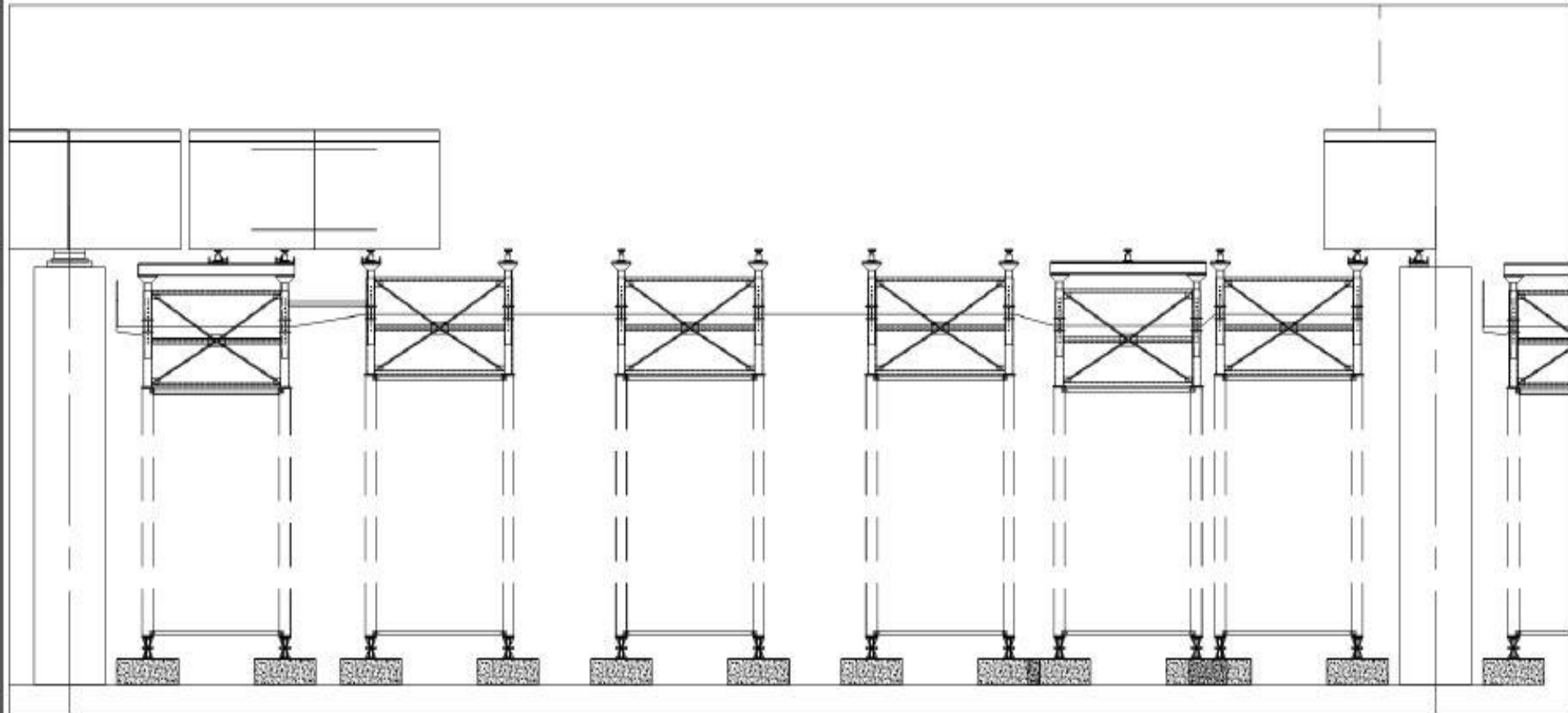


## Shoring Tower Layout for Typical Span:





## Shoring Tower Layout for Typical Span:



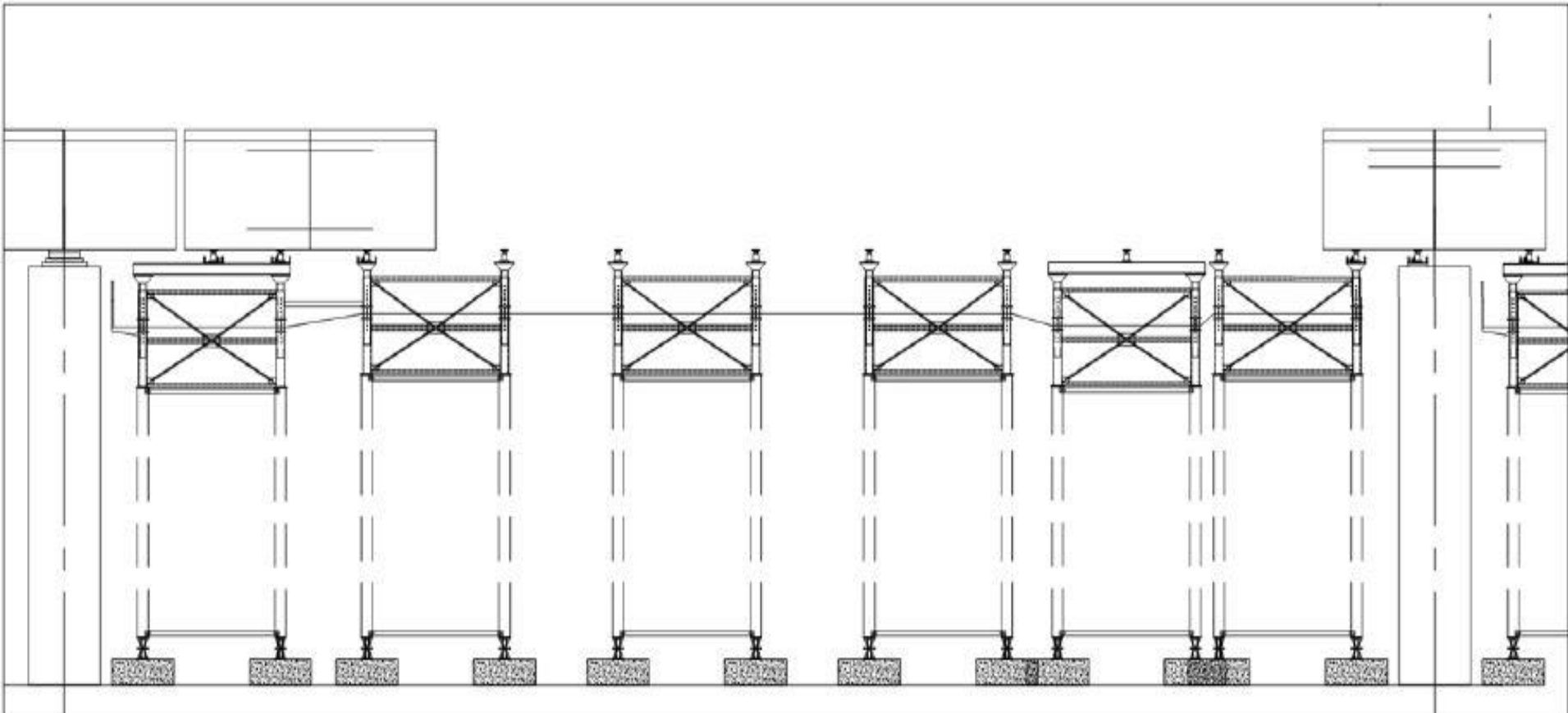




OSCAR MERA CONTRACTING

## SHORING TOWER METHOD & FOUNDATIONS

Shoring Tower Layout for Typical Span:



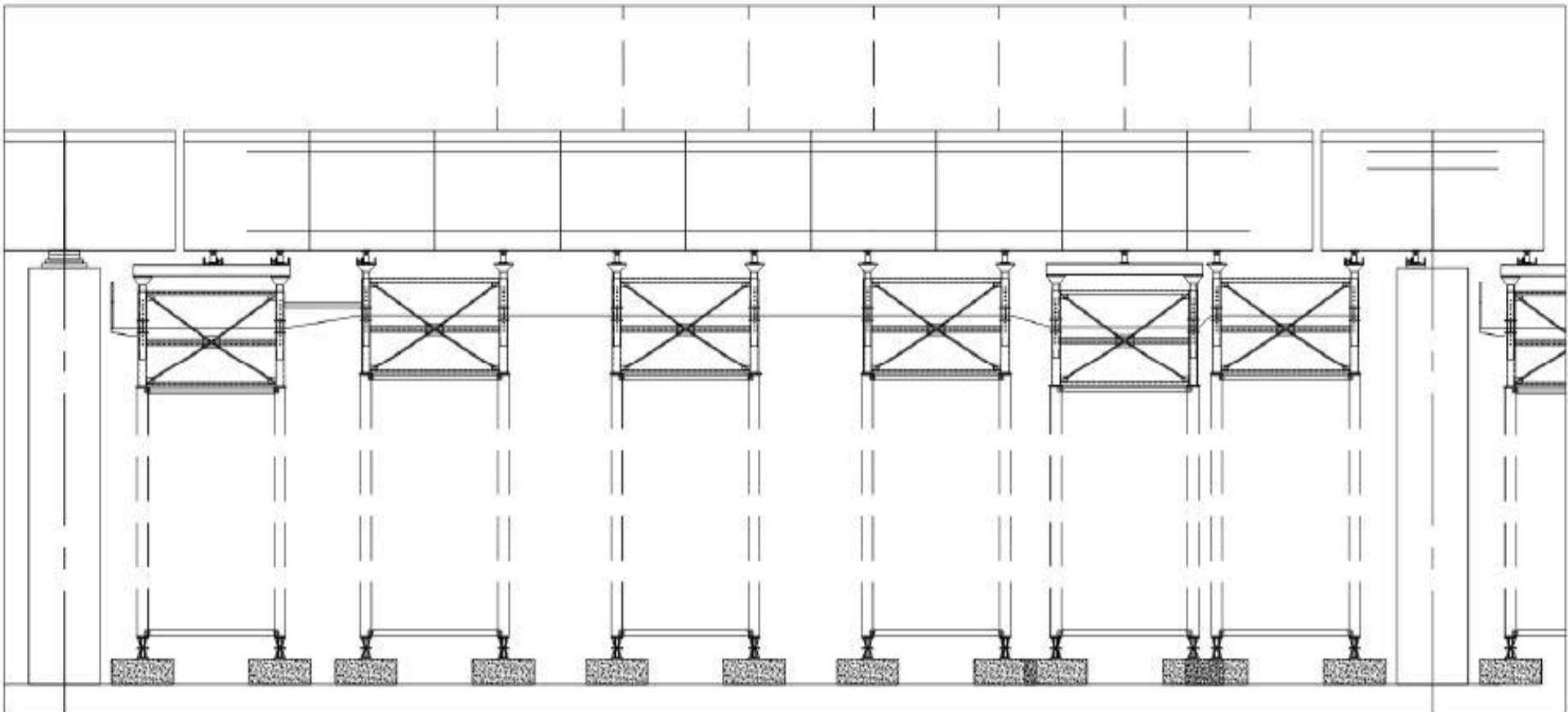




JH ENGINEERING & CONSTRUCTION  
BOCAI NEW RA CONTRACTING

## SHORING TOWER METHOD & FOUNDATIONS

Shoring Tower Layout for Typical Span:



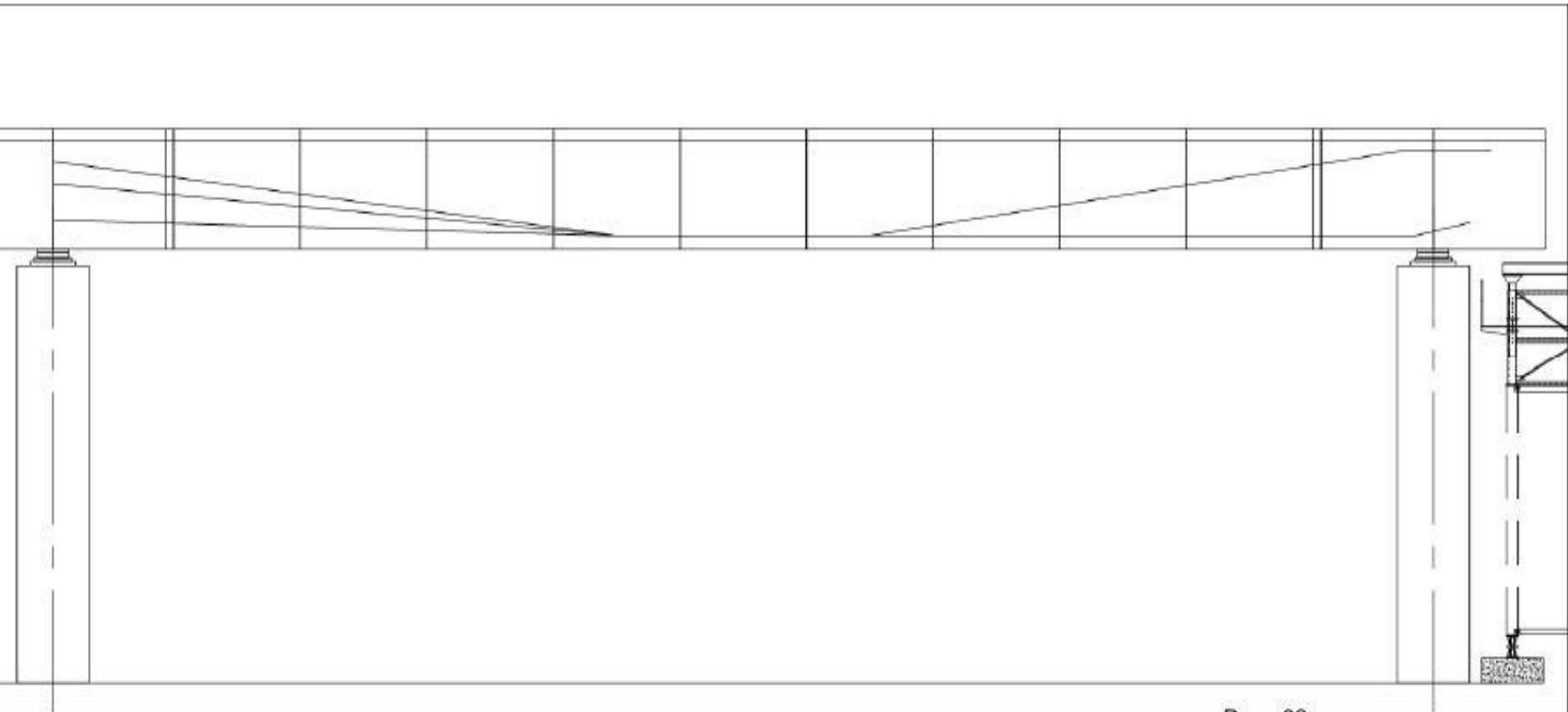




JH ENGINEERING CORPORATION  
BOCA RATON CONTRACTORS

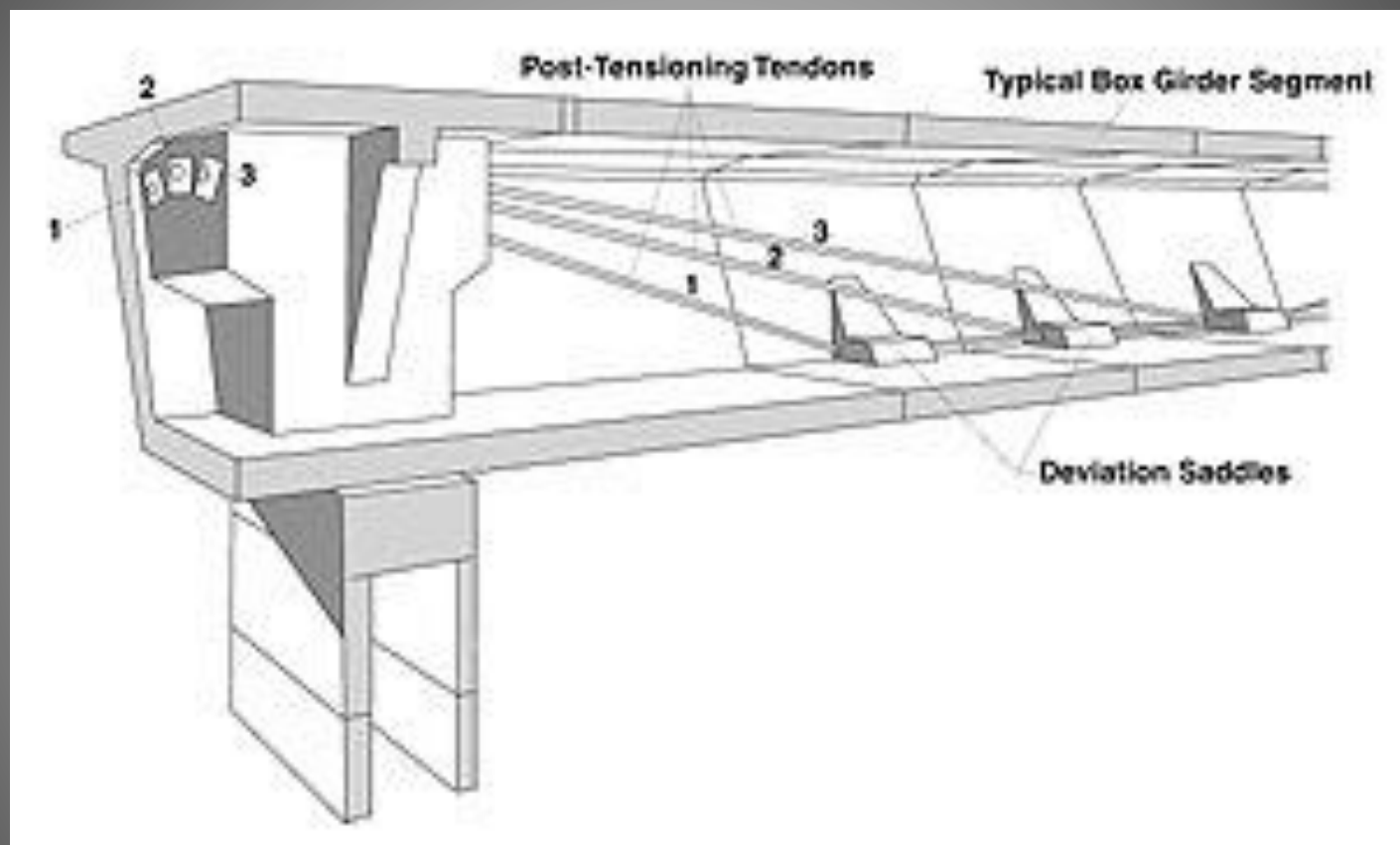
## SHORING TOWER METHOD & FOUNDATIONS

Shoring Tower Layout for Typical Span:



Drawn 2/1









6E11





VSL

15

ok

17

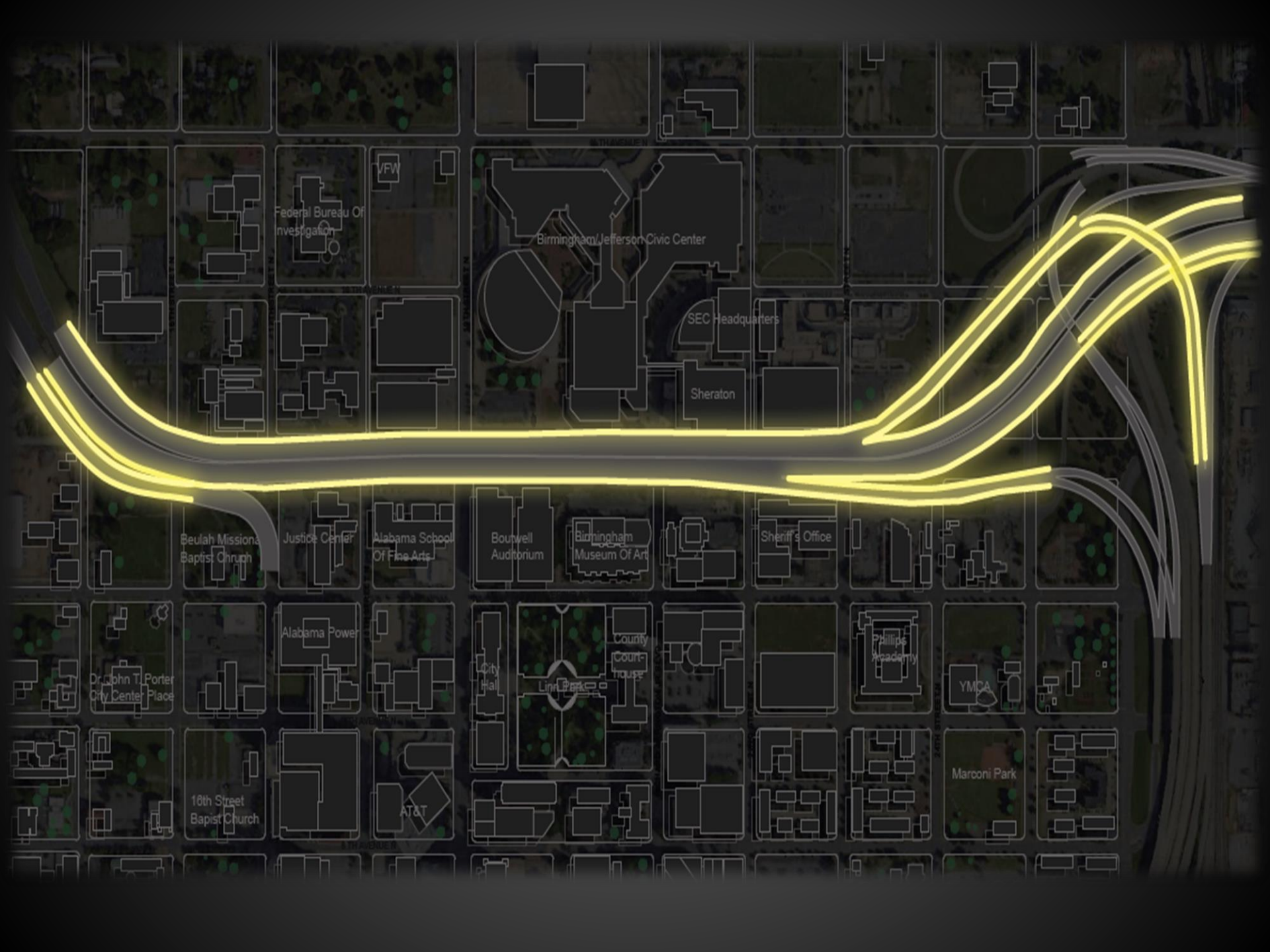
10

ok









Federal Bureau Of Investigation

VFW

Birmingham/Jefferson Civic Center

SEC Headquarters

Sheraton

Beulah Mission Baptist Church

Justice Center

Alabama School Of Fine Arts

Bonwell Auditorium

Birmingham Museum Of Art

Sheriff's Office

Dr. John T. Porter City Center Place

Alabama Power

City Hall

Lincoln Park

County Courthouse

Phillips Academy

YMCA

10th Street Baptist Church

AT&T

Marooni Park





**St. Patrick's Day / UAB Home Game**

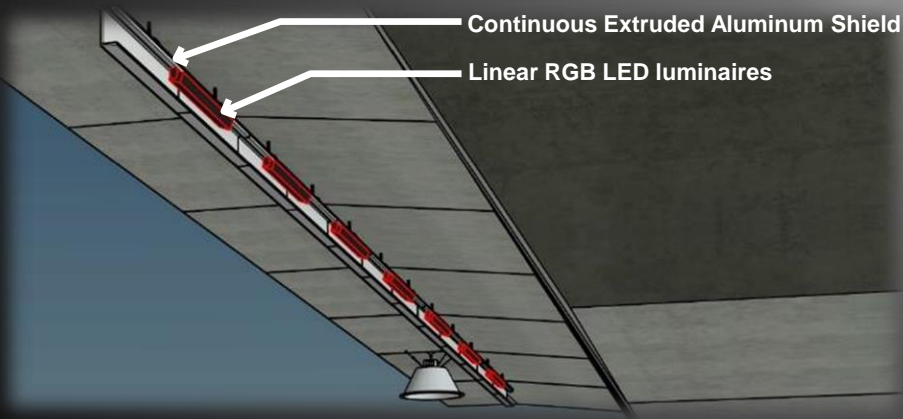


**Independence / Memorial / Veterans Day**

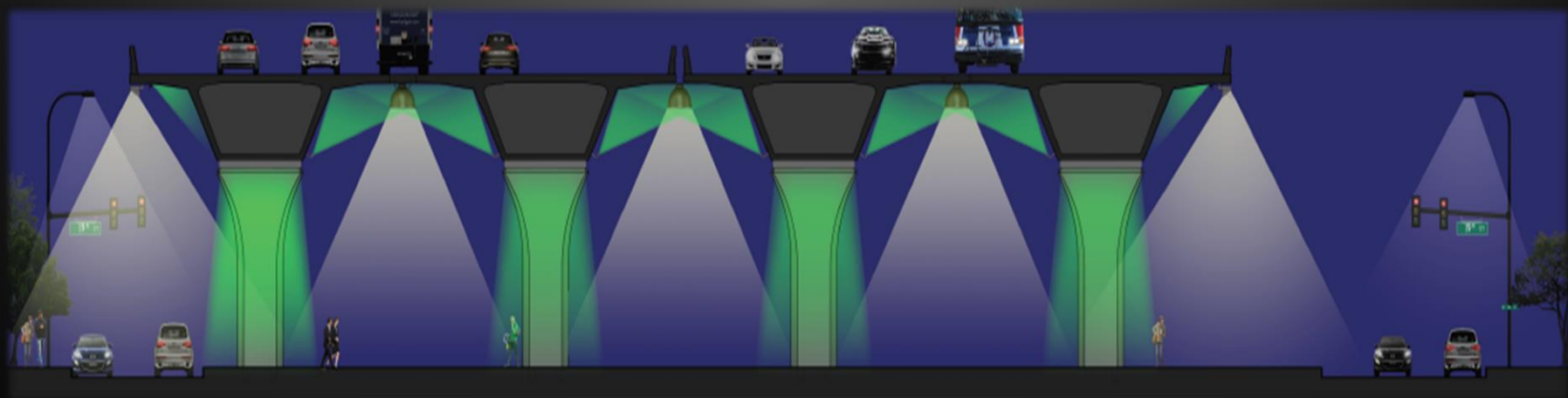




Every Night "Warm" White









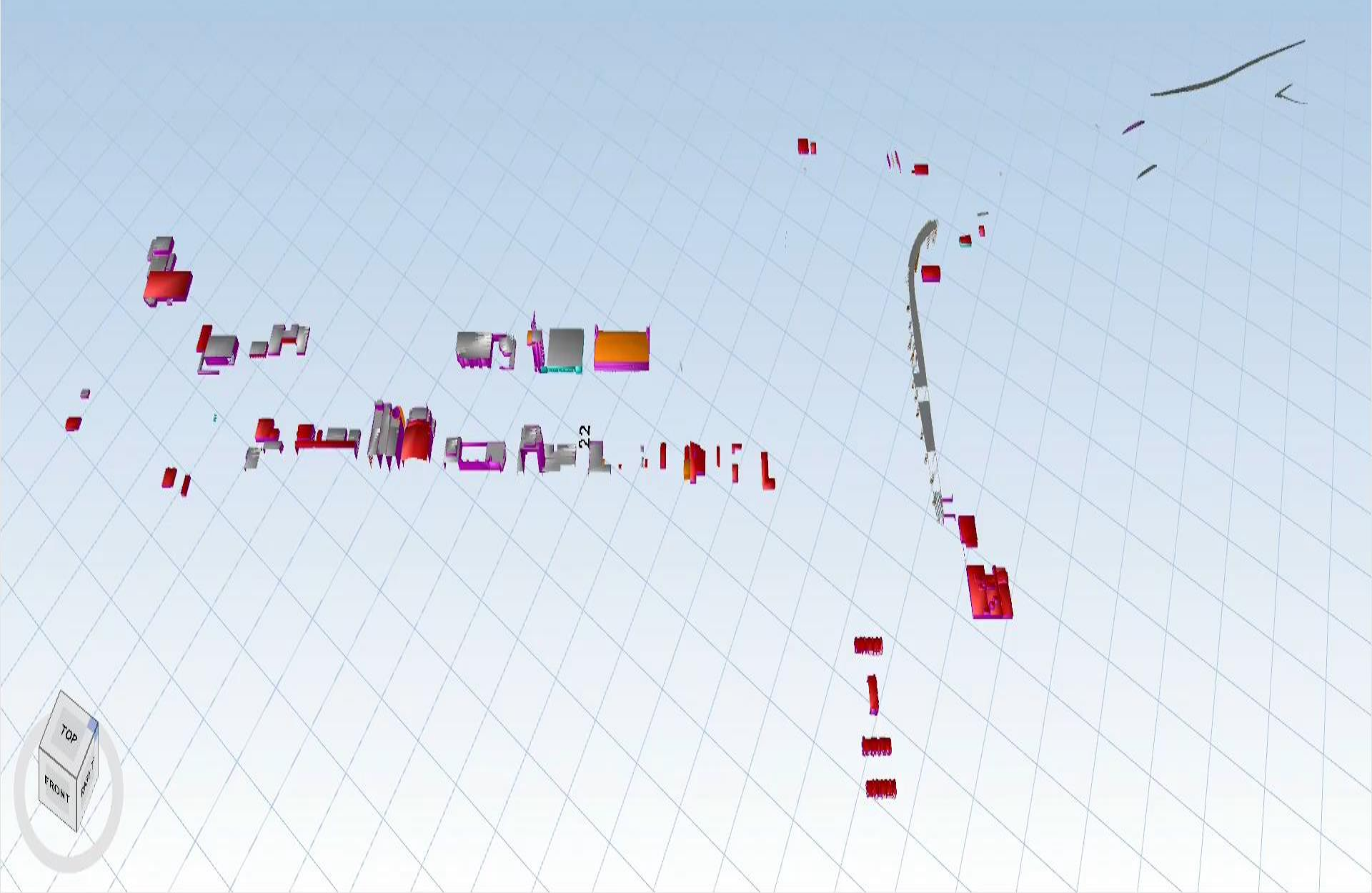




| Activity Name     | Start     | Finish    | 1. 2016   |     | Qtr 2. 2016 |     | Qtr 3. 2016 |     | Qtr 4. 2016 |     | Qtr 1. 2017 |     | Qtr 2. 2017 |     | Qtr 3. 2017 |     | Qtr 4. 2017 |     | Qtr 1. 2018 |     | Qtr 2. 2018 |     | Qtr 3. 2018 |     | Qtr 4. 2018 |     | Qtr 1. 2019 |     |     |     |
|-------------------|-----------|-----------|---|-----|-------------|-----|-------------|-----|-------------|-----|-------------|-----|-------------|-----|-------------|-----|-------------|-----|-------------|-----|-------------|-----|-------------|-----|-------------|-----|-------------|-----|-----|-----|
|                   |           |           | Feb   | Mar | Apr         | May | Jun         | Jul | Aug         | Sep | Oct         | Nov | Dec         | Jan | Feb         | Mar | Apr         | May | Jun         | Jul | Aug         | Sep | Oct         | Nov | Dec         | Jan | Feb         | Mar | Apr | May |
| <b>Bridges</b>    | Feb-19-16 | Jun-26-18 | <div style="display: flex; justify-content: space-between;"> <span>← Jun-26-18, Bridges</span> <span>→ Jun-26-18, Bridges</span> </div>   |     |             |     |             |     |             |     |             |     |             |     |             |     |             |     |             |     |             |     |             |     |             |     |             |     |     |     |
| <b>Bridge #6</b>  | Jun-17-16 | Sep-07-16 | <div style="display: flex; justify-content: space-between;"> <span>← Sep-07-16, Bridge #6</span> <span>→ Sep-07-16, Bridge #6</span> </div> <ul style="list-style-type: none"> <li>■ Removal of Old Bridge, Partial, Sta. 140+78.15 (Bridge #6) (11s)</li> <li>■ F&amp;I Rebar, Cap. (Bridge #6)</li> <li>■ F&amp;I Structural Steel, (Bridge #6)</li> <li>■ Bridge Concrete, Class B, F/P/S Deck, (Bridge #6)</li> <li>■ Reinforced Cement Concrete Bridge End Slab (Bridge #6) (60 sy)</li> <li>■ Paver Laid Surface Treatment Tack Coat (Bridge #6) (30 gal)</li> <li>■ Paver Laid Surface Treatment Plant Mix (Bridge #6) (21 ton)</li> <li>■ Traffic Rail Extensions (1 ea) (Bridge #6)</li> </ul>   |     |             |     |             |     |             |     |             |     |             |     |             |     |             |     |             |     |             |     |             |     |             |     |             |     |     |     |
| <b>Bridge #6A</b> | Feb-19-16 | Aug-14-17 | <div style="display: flex; justify-content: space-between;"> <span>← Aug-14-17, Bridge #6A</span> <span>→ Aug-14-17, Bridge #6A</span> </div> <ul style="list-style-type: none"> <li>■ Subcontract with Supplier (Bridge #6A)</li> <li>■ Subcontract with Supplier (Bridge #6A)</li> <li>■ Subcontract with Supplier (Bridge #6A)</li> <li>■ Shop Drawings (Submit) - (Bridge #6A) Span 04 thru 11</li> <li>■ Shop Drawings (Submit) - (Bridge #6A) Span 01 thru 11</li> <li>■ Shop Drawings (Submit) - (Bridge #6A) Span 01 thru 03</li> <li>■ Shop Drawings (Review &amp; Approval) - (Bridge #6A) Span 04 thru 11</li> <li>■ Shop Drawings (Review &amp; Approval) - (Bridge #6A) Span 01 thru 11</li> <li>■ Shop Drawings (Review &amp; Approval) - (Bridge #6A) Span 01 thru 03</li> <li>■ Type BT-63 (Specialty Item), Fabricate, (Bridge #6A) Span 04 thru 11</li> <li>■ Fabrication PMD - (Bridge #6A) Span 01 thru 11</li> <li>■ Str Sll Girders, Fabrication, (Bridge #6A) Span 01 thru 03 971,400 lbs</li> <li>■ Elastomeric Bearings, Type 4, Fabricate, (Bridge #6A)</li> <li>■ Elastomeric Bearings, Type 5, Fabricate, (Bridge #6A)</li> <li>■ Elastomeric Bearings, Type 4, Mark VB4, Fabricate, (Bridge #6A)</li> <li>■ Unclassified Bridge Excavation, Footing, (Bridge #6A) Bent 02 (1 ea)</li> <li>■ Unclassified Bridge Excavation, Footing, (Bridge #6A) Bent 03 (1 ea)</li> <li>■ Unclassified Bridge Excavation, Footing, (Bridge #6A) Bent 04 (1 ea)</li> <li>■ Unclassified Bridge Excavation, Footing, (Bridge #6A) Bent 05 (1 ea)</li> <li>■ Unclassified Bridge Excavation, Footing, (Bridge #6A) Bent 06 (1 ea)</li> <li>■ Unclassified Bridge Excavation, Footing, (Bridge #6A) Bent 07 (1 ea)</li> <li>■ Unclassified Bridge Excavation, Footing, (Bridge #6A) Bent 08 (1 ea)</li> <li>■ Unclassified Bridge Excavation, Footing, (Bridge #6A) Bent 09 (1 ea)</li> <li>■ Unclassified Bridge Excavation, Footing, (Bridge #6A) Bent 10 (1 ea)</li> <li>■ Unclassified Bridge Excavation, Footing, (Bridge #6A) Bent 11 (1 ea)</li> <li>■ Temporary Shoring for Footing, (Bridge #6A) Bent 02 (1 ea) (420 sf)</li> <li>■ Temporary Shoring for Footing, (Bridge #6A) Bent 03 (1 ea) (746 sf)</li> <li>■ Steel Piling Furnished &amp; Driven, HP14x117 Pile, (Bridge #6A) Abutment 01 (8 ea)</li> <li>■ Weld File Points (Type A 14 in.), (Bridge #6A) Abutment 01 (8 ea)</li> <li>■ Steel Test Pile (HP 14x89), (Bridge #6A) (1 ea)</li> <li>■ Dynamic Loading Test (HP 14x114), (Bridge #6A) (1 ea)</li> <li>■ F&amp;I Structural Steel, (Bridge #6A) Abutment 01</li> <li>■ F&amp;I Rebar, Cap. (Bridge #6A) Abutment 01</li> <li>■ Drill Pilot Holes, (Bridge #6A) Bent 10</li> <li>■ Steel Piling Furnished &amp; Driven, HP14x102 Pile, (Bridge #6A) Bent 02 (36 ea)</li> <li>■ Weld File Points (Type A 14 in.), (Bridge #6A) Bent 02 (36 ea)</li> <li>■ Steel Piling Furnished &amp; Driven, HP14x102 Pile, (Bridge #6A) Bent 03 (28 ea)</li> <li>■ Weld File Points (Type A 14 in.), (Bridge #6A) Bent 03 (28 ea)</li> <li>■ Steel Piling Furnished &amp; Driven, HP14x117 Pile, (Bridge #6A) Bent 04 (24 ea)</li> <li>■ Weld File Points (Type A 14 in.), (Bridge #6A) Bent 04 (24 ea)</li> </ul> |     |             |     |             |     |             |     |             |     |             |     |             |     |             |     |             |     |             |     |             |     |             |     |             |     |     |     |

■ Actual Work   
 ■ Critical Remaining Work   
 ■ Summary  
■ Remaining Work   
 ◆ Milestone





3D Using Dates [Best] [1918x687]



Presented By:

Adam Patterson

Project Manager  
Volkert

[adam.patterson@volkert.com](mailto:adam.patterson@volkert.com)



QUESTIONS?