



**ASCE**<sup>®</sup>  
AMERICAN SOCIETY OF CIVIL ENGINEERS

**State of the Society**  
**Alabama Section Summer Conference**  
*July 20, 2016*

**Mark W. Woodson, P.E., L.S., D.WRE, F.ASCE**  
**2016 President**

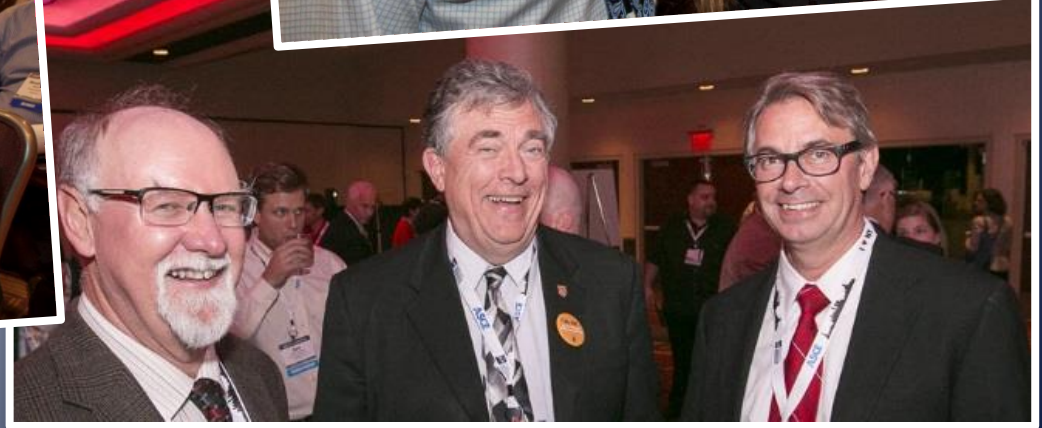


# ASCE's Broad Reach



**THE AMERICAN  
SOCIETY OF CIVIL  
ENGINEERS CHOSE  
THIS LANDMARK  
AS ONE OF  
THE 7 WONDERS OF  
THE MODERN WORLD**

# American Society of Civil Engineers





# Leader Development

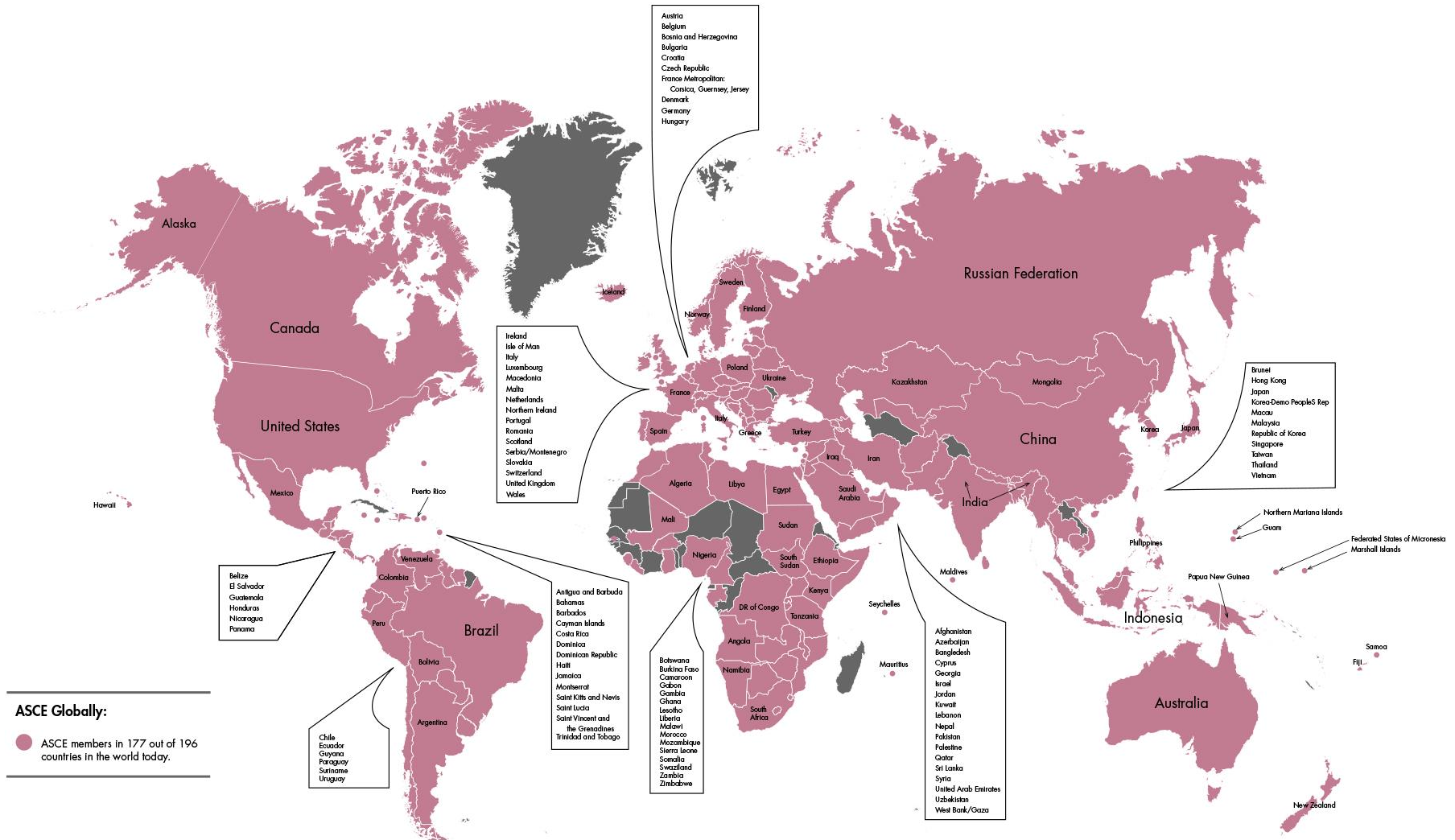


# Technical Excellence





# Global Strategy



# The Vision

Entrusted by society to create a sustainable world and enhance the global quality of life, civil engineers serve competently, collaboratively, and ethically as ...

**Civil Engineering in**  
**2025**

# ASCE's Strategic Initiatives





# Sustainable Infrastructure

A scenic view of a city skyline at dusk, reflected in a body of water, with mountains in the background. The sky is a mix of soft pinks, oranges, and blues. The city buildings are lit up, and their lights reflect on the water. The mountains in the background are dark and silhouetted against the sky. The water is calm, and the overall atmosphere is peaceful and serene.

Environmental  
Economic  
Social Well-Being



# Sustainability



## Canon 1

Engineers shall hold paramount the safety, health and welfare of the public and shall strive to comply with the principles of sustainable development in the performance of their professional duties.



# Rating Infrastructure Sustainability





# Envision Project



Photo : San Diego International Airport

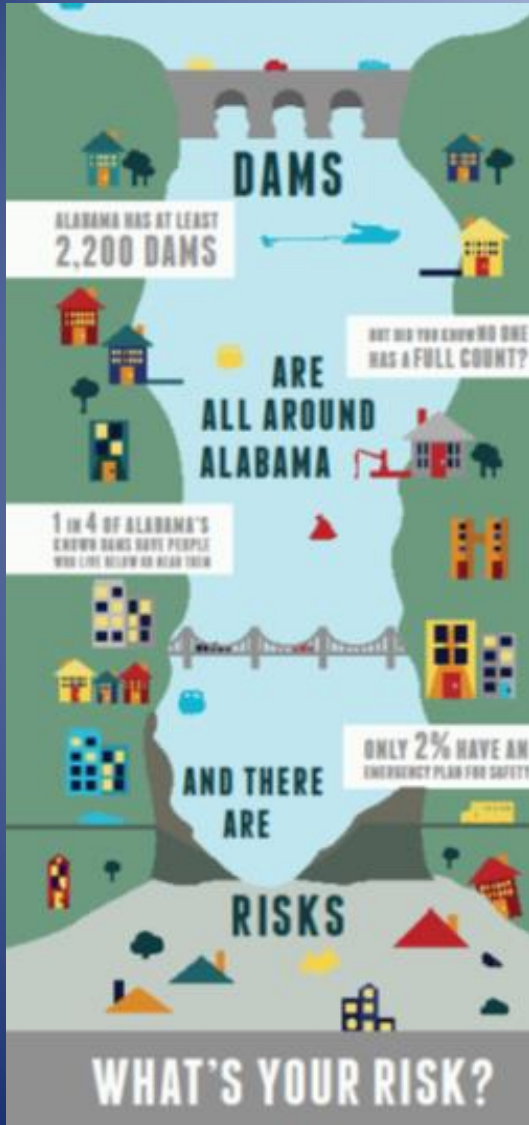
San Diego International Airport Green Build Project : Envision Platinum



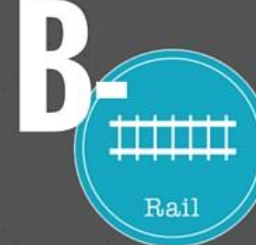
# The Sustainability Summit



# Aging Infrastructure



## ALABAMA'S INFRASTRUCTURE





# Grading America's Infrastructure



[WWW.INFRASTRUCTUREREPORTCARD.ORG/APP](http://WWW.INFRASTRUCTUREREPORTCARD.ORG/APP)

# 2013 REPORT CARD FOR AMERICA'S INFRASTRUCTURE

Aviation	<b>D</b>
Bridges	<b>C+</b>
Dams	<b>D</b>
Drinking Water	<b>D</b>
Energy	<b>D+</b>
Hazardous Waste	<b>D</b>
Inland Waterways	<b>D-</b>
Levees	<b>D-</b>
Ports	<b>C</b>
Public Parks and Recreation	<b>C-</b>
Rail	<b>C+</b>
Roads	<b>D</b>
Schools	<b>D</b>
Solid Waste	<b>B-</b>
Transit	<b>D</b>
Wastewater	<b>D</b>
<b>America's Cumulative G.P.A.</b>	<b>D+</b>

- A** = Exceptional
- B** = Good
- C** = Mediocre
- D** = Poor
- F** = Failing

*Each category was evaluated on the basis of capacity, condition, funding, future need, operation and maintenance, public safety, resilience, and innovation*

**D+**

**AMERICA'S CUMULATIVE  
INFRASTRUCTURE G.P.A.**





# FAILURE TO ACT

---

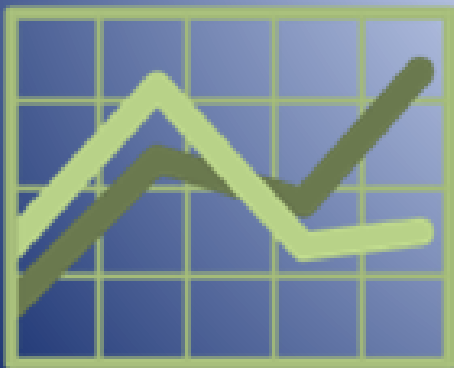
CLOSING THE INFRASTRUCTURE

★ INVESTMENT GAP ★

FOR AMERICA'S ECONOMIC FUTURE

---

**\$3.9T loss  
to U.S. GDP**



**\$3,400 loss  
to household  
income**

**2.5 Million  
Jobs at Stake  
in 2025**



# FAST Act Signed into Law



THE FIXING AMERICA'S SURFACE TRANSPORTATION ACT



# #GAMECHANGERS



TRANSPORTATION



WATER



FREIGHT

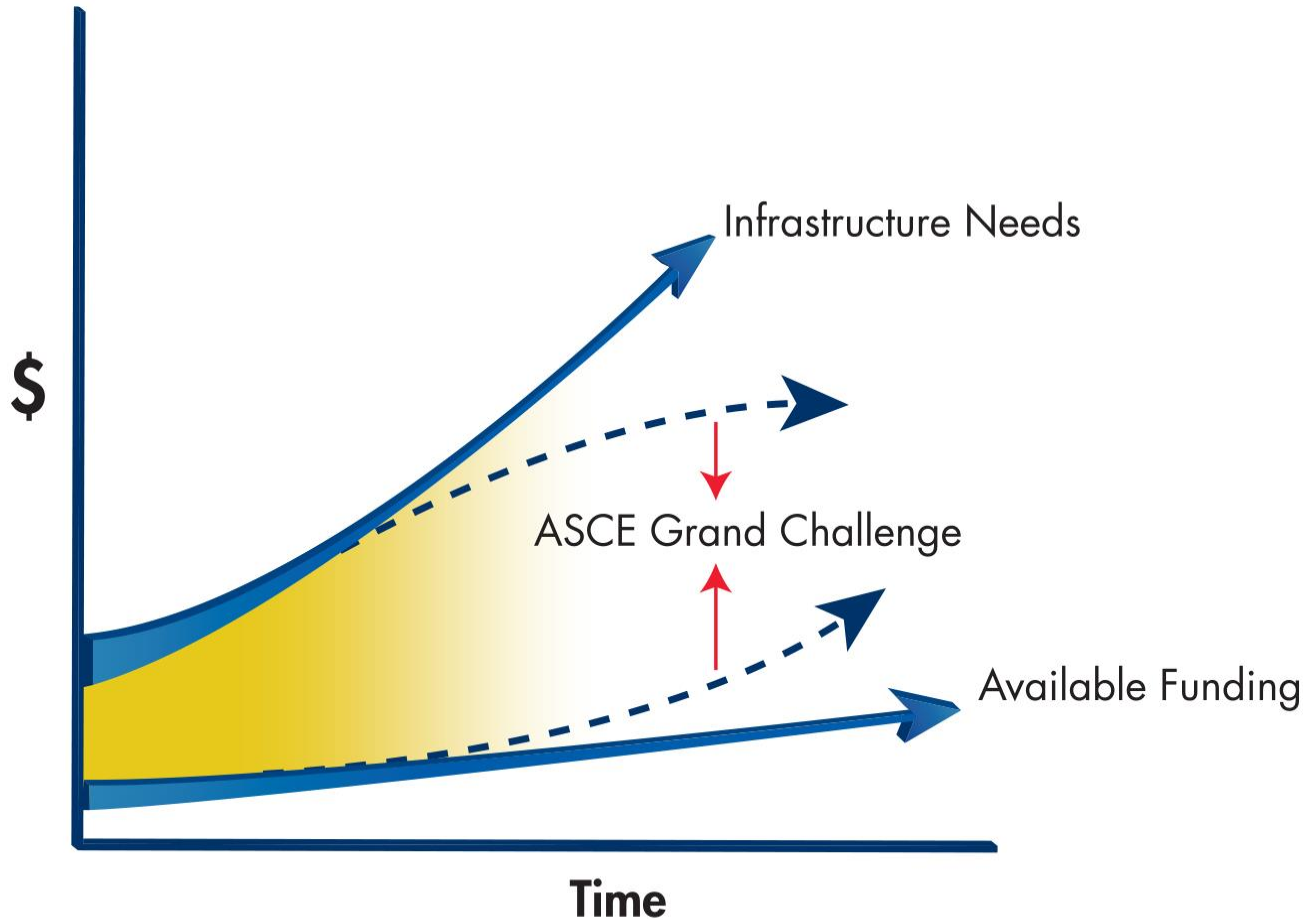


ENERGY

**Projects being planned and built today are readying us for tomorrow's challenges.**

# ASCE Grand Challenge

## Closing Infrastructure Gap



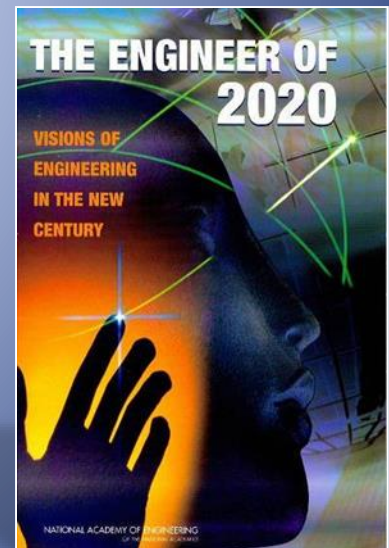


# ASCE Innovation Contest



# The World of Tomorrow

“It is evident that the exploding body of science and engineering knowledge cannot be accommodated within the context of the traditional four-year baccalaureate degree.”





RAISE THE BAR  
FOR **ENGINEERING**

# Guided Online Courses





# ASCE 2016 Convention



**ASCE 2016**  
**CONVENTION**  
PORTLAND, OREGON  
SEP. 29 – OCT. 1

Engineering › Innovating › Leading



# Celebrating the Profession



A MacGillivray Freeman Films Production

# DREAM BIG

ENGINEERING WONDERS OF THE WORLD

In partnership with the American Society of Civil Engineers. Presented by Bechtel Corporation.





**Thank You!**